

## RESEARCH OUTPUTS / RÉSULTATS DE RECHERCHE

### Correction

Renzi, Francesco; Manfredi, Pablo; Mally, Manuela; Moes, Suzette; Jenö, Paul; Cornelis, Guy R.

*Published in:*  
Plos Pathogens

*DOI:*  
[10.1371/journal.ppat.1005352](https://doi.org/10.1371/journal.ppat.1005352)

*Publication date:*  
2015

*Document Version*  
Publisher's PDF, also known as Version of record

### [Link to publication](#)

*Citation for published version (HARVARD):*

Renzi, F, Manfredi, P, Mally, M, Moes, S, Jenö, P & Cornelis, GR 2015, 'Correction: The N-glycan Glycoprotein Deglycosylation Complex (Gpd) from *Capnocytophaga canimorsus* Deglycosylates Human IgG ((2015), 11, 12)', *Plos Pathogens*, vol. 11, no. 12, e1005352. <https://doi.org/10.1371/journal.ppat.1005352>

### General rights

Copyright and moral rights for the publications made accessible in the public portal are retained by the authors and/or other copyright owners and it is a condition of accessing publications that users recognise and abide by the legal requirements associated with these rights.

- Users may download and print one copy of any publication from the public portal for the purpose of private study or research.
- You may not further distribute the material or use it for any profit-making activity or commercial gain
- You may freely distribute the URL identifying the publication in the public portal ?

### Take down policy

If you believe that this document breaches copyright please contact us providing details, and we will remove access to the work immediately and investigate your claim.

CORRECTION

# Correction: The *N*-glycan Glycoprotein Deglycosylation Complex (Gpd) from *Capnocytophaga canimorsus* Deglycosylates Human IgG

Francesco Renzi, Pablo Manfredi, Manuela Mally, Suzette Moes, Paul Jenö, Guy R. Cornelis

The authors would like to correct [Fig 6B](#). The blot depicted in [Fig 6B](#) contains two errors: 1) the blot has been assembled by cropping and moving lanes from different parts of a same membrane without indication of this manipulation in the figure and in the legend; 2) the blot displays duplicated data in two lanes. These errors occurred during assembly of the final figure. The authors have corrected [Fig 6B](#) replacing the duplicated lanes with the correct ones and have boxed the lanes that were cropped and moved from the same or different blots.

The authors confirm that these changes do not alter their findings. The authors have provided raw, uncropped blots as Supporting Information.

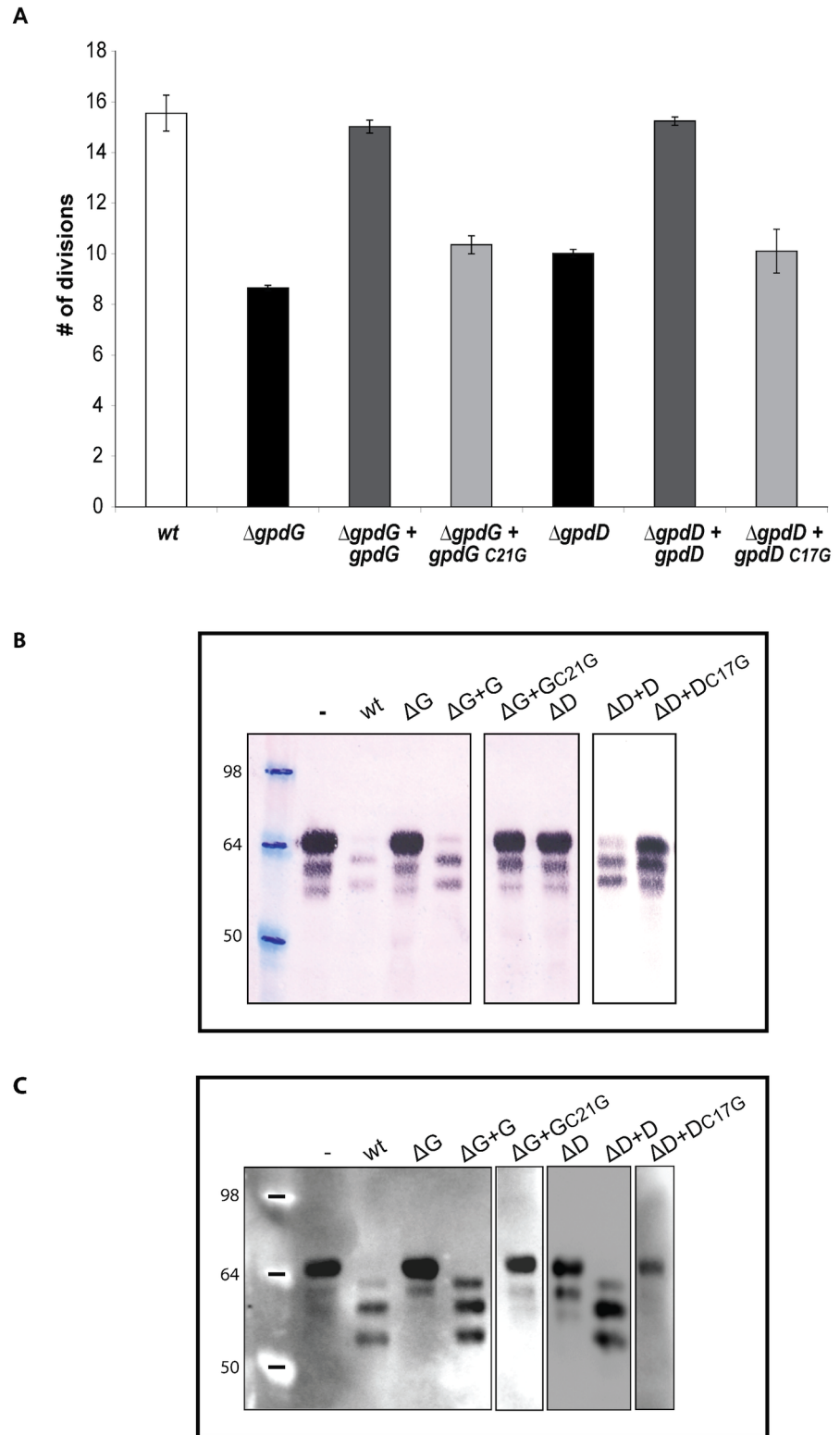


## OPEN ACCESS

**Citation:** Renzi F, Manfredi P, Mally M, Moes S, Jenö P, Cornelis GR (2015) Correction: The *N*-glycan Glycoprotein Deglycosylation Complex (Gpd) from *Capnocytophaga canimorsus* Deglycosylates Human IgG. PLoS Pathog 11(12): e1005352. doi:10.1371/journal.ppat.1005352

**Published:** December 15, 2015

**Copyright:** © 2015 Renzi et al. This is an open access article distributed under the terms of the [Creative Commons Attribution License](#), which permits unrestricted use, distribution, and reproduction in any medium, provided the original author and source are credited.



**Fig 6. Lipid modification of GpdD and GpdG is essential for their activity.** (A) Number of divisions after 23 h growth on HEK293 cells of  $\Delta gpdG$  bacteria complemented with  $gpdG_{C21G}$  and of  $\Delta gpdD$  bacteria complemented with  $gpdD_{C17G}$ . (B) Fetuin glycosylation state of samples incubated for 2 hours in the presence of the different strains, determined by staining with SNA. (C) Same as B analyzed by western blot

with anti-fetuin antibodies. The boxes indicate lanes that have been cropped and moved either from a same or a different blot.

doi:10.1371/journal.ppat.1005352.g001

## Supporting Information

**S1 Fig. Uncropped blots.** Original unmodified blots used for the assembly of [Fig 6B](#). The lanes used in [Fig 6B](#) are identified and labeled.  
(TIF)

## Reference

1. Renzi F, Manfredi P, Mally M, Moes S, Jenö P, Cornelis GR (2011) The *N*-glycan Glycoprotein Deglycosylation Complex (Gpd) from *Capnocytophaga canimorsus* Deglycosylates Human IgG. *PLoS Pathog* 7(6): e1002118. doi:[10.1371/journal.ppat.1002118](https://doi.org/10.1371/journal.ppat.1002118) PMID: [21738475](https://pubmed.ncbi.nlm.nih.gov/21738475/)