

RESEARCH OUTPUTS / RÉSULTATS DE RECHERCHE

Lipoteichoic acid stimulates the proliferation, migration and cytokine production of adult dental pulp stem cells without affecting osteogenic differentiation

Shayegan, Amir; Zucchi, Alessandro; De Swert, Kathleen; Balau, Benoit; Truyens, Carine; Nicaise, Charles

Published in:
International Endodontic Journal

DOI:
[10.1111/iej.13448](https://doi.org/10.1111/iej.13448)

Publication date:
2020

Document Version
Peer reviewed version

[Link to publication](#)

Citation for published version (HARVARD):

Shayegan, A, Zucchi, A, De Swert, K, Balau, B, Truyens, C & Nicaise, C 2020, 'Lipoteichoic acid stimulates the proliferation, migration and cytokine production of adult dental pulp stem cells without affecting osteogenic differentiation', *International Endodontic Journal*, vol. 54, no. 4, pp. 585-600. <https://doi.org/10.1111/iej.13448>

General rights

Copyright and moral rights for the publications made accessible in the public portal are retained by the authors and/or other copyright owners and it is a condition of accessing publications that users recognise and abide by the legal requirements associated with these rights.

- Users may download and print one copy of any publication from the public portal for the purpose of private study or research.
- You may not further distribute the material or use it for any profit-making activity or commercial gain
- You may freely distribute the URL identifying the publication in the public portal ?

Take down policy

If you believe that this document breaches copyright please contact us providing details, and we will remove access to the work immediately and investigate your claim.

Lipoteichoic acid stimulates the proliferation, migration and cytokine production of adult dental pulp stem cells without affecting osteogenic differentiation

Journal:	<i>International Endodontic Journal</i>
Manuscript ID	IEJ-19-00560.R2
Wiley - Manuscript Type:	Original Scientific Article
Keywords:	Dental pulp stem cells, Toll-like receptor, TLR2 agonist, Lipoteichoic acid

SCHOLARONE™
Manuscripts

1
2
3 **Lipoteichoic acid stimulates the proliferation, migration and cytokine production of adult dental**
4 **pulp stem cells without affecting osteogenic differentiation**
5
6
7
8
9

10 A Shayegan¹, A Zucchi², K De Swert³, B Balau³, C Truyens², C Nicaise³
11
12
13
14
15
16

17 ¹ Department of Children and Adult Operative Dentistry, Children's Hospital of Queen
18
19

20 Fabiola, Université Libre de Bruxelles, Brussels, Belgium. ² Laboratory of Parasitology,
21
22

23 Université Libre de Bruxelles, Brussels, Belgium. ³ URPhyM – NARILIS, Université de
24
25

26 Namur, Namur, Belgium
27
28
29
30
31

32 **Running title:** DPSCs and Lipoteichoic acid
33
34
35

36 **Keywords:** Dental pulp stem cells; lipoteichoic acid; Toll-like receptor; TLR2 agonist
37
38
39

40 **Correspondence to:** Dr. Amir Shayegan
41

42 Department of Children and Adult Operative Dentistry, Children's Hospital of Queen Fabiola,
43
44

45 HUDERF, Avenue Jean Joseph Crocq 15, 1020 Bruxelles, Belgium
46
47

48 E-Mail: amir.shayegan@ulb.ac.be
49

50 Phone: +3224773131
51
52
53
54
55
56
57
58
59
60

Abstract

Aim To model *in vitro* the contact between adult dental pulp stem cells (DPSCs) and lipoteichoic acid (LTA), a cell wall component expressed at the surface of most Gram-positive bacteria.

Methodology Human DPSCs obtained from impacted third molars were cultured and exposed to various concentrations of *S.aureus* LTA (0.1, 1.0 and 10.µg/mL). Effects of LTA on DPSCs proliferation and apoptosis were investigated by MTT assay and flow cytometry. Mineralization of DPSCs was evaluated by alizarin red staining assay. Migration was investigated by microphotographs of wound healing and Transwell migration assays. Reverse transcription polymerase chain reaction was used to examine the effects of LTA on p65 NF-κB translocation and TLR1, -2 or -6 regulation. Enzyme-linked immunosorbent assay was used to investigate LTA-stimulated DPSCs cytokine production. One-way or two-way ANOVA and Tukey post-hoc multiple comparison were used for statistical analysis

Results DPSCs expressed TLR1, -2 and -6 involved in the recognition of various forms of LTA or lipoproteins. Exposure to LTA did not up- or down- regulate the mRNAs of TLR1, -2 or -6 while LPS acted as a potent inducer of them [TLR1 ($P \leq 0.05$), TLR2 ($P \leq 0.001$) and TLR6 ($P \leq 0.001$)]. Translocation of p65 NF-κB to the nucleus was detected in LTA-stimulated cells, but to a lesser extent than LPS-stimulated DPSCs ($P \leq 0.001$). The viability of cells exposed to LTA was greater than unstimulated cells, which was attributed to an increased proliferation and not to less cell death [LTA 1µg/mL ($P \leq 0.001$) and 10 µg/mL ($P \leq 0.01$)]. For specific doses of LTA (1.0 µg/mL), adhesion of DPSCs to collagen matrix was disturbed ($P \leq 0.05$) and cells

1
2
3 enhanced their horizontal mobility ($P \leq 0.001$). LTA-stimulated DPSCs released IL-6 and IL-8
4
5
6 in a dose-dependent manner ($P \leq 0.0001$). At all concentrations investigated, LTA did not
7
8
9 influence osteogenic/odontoblastic differentiation.
10
11

12 **Conclusions** Human DPSCs were able to sense the wall components of Gram-positive bacteria
13
14 likely through TLR2 signaling. Consequently, cells modestly proliferated, increased their
15
16 migratory behavior and contributed significantly to the local inflammatory response through
17
18
19 cytokine release.
20
21
22
23
24
25
26
27
28
29
30
31
32
33
34
35
36
37
38
39
40
41
42
43
44
45
46
47
48
49
50
51
52
53
54
55
56
57
58
59
60

Introduction

During the initial phase, oral pathogens responsible for dental caries are essentially represented by Gram-positive and facultative anaerobic bacteria such as *Streptococcus mutans*. Through the production of various acids, these bacteria progressively drive the demineralization of enamel and dentine, to finally gain access to the pulp (Bowen & Koo 2011). Once in contact with living tissues, the primary response of pulp cells relies on pathogen recognition and inflammation (pulpitis), which helps at recruiting and activating the immune system (Yu & Abbott 2007). The rapid sensing of pathogens involves highly conserved molecular domains of the pathogens with specialized pattern-recognition receptors (PRRs) among which are the Toll-like receptors (TLRs), expressed by non-immune and immune cells. TLR activation initiates the production of pro-inflammatory cytokines and chemokines that lead to the recruitment of innate immune cells (Yu & Abbott 2007). Ten human TLRs have been identified and divided into major families (Roach *et al.* 2005): the TLR1 group including TLR1, TLR2, and TLR6, detecting lipopeptides; TLR4 sensing lipopolysaccharides (LPS); TLR3 for double-stranded RNA; TLR5 for flagellin; the TLR7 family, including TLR7, TLR8 and TLR9, able to detect nucleic acids and TLR10 likely also detecting dsRNA (Jiang *et al.* 2016). Gram-positive bacteria typically express lipoteichoic acid (LTA) in their cell wall where it serves as a surface-associated adhesion factor and a regulator of autolytic wall enzymes (Morath *et al.* 2005, Schneewind & Missiakas 2017). LTA is one of the natural agonists of TLR2. TLR2 can heterodimerize with either TLR1 or TLR6, to discriminate between diacyl (TLR1/2) and triacyl (TLR2/6) lipopeptides. Overall, TLR2 mediates the responses towards zymosan, peptidoglycan and various forms of lipoproteins or lipoteichoic acids.

Dental pulp stem cells (DPSCs) are a minority of resident pulp cells that remain quiescent *in vivo*. Following an injury or during an infection, they can respond quickly and migrate to the affected pulp site (Goldberg *et al.* 2008). By their differentiation properties into odontoblasts, they actively build reactionary dentine, while also being involved in the regulation of the pulpal immune response (Cooper *et al.* 2010). DPSCs isolated from human third molars and grown in laboratory conditions have a high proliferative capacity with self-renewal and multi-differentiation properties (Gronthos *et al.* 2000, Podtar *et al.* 2015). *In vitro*, DPSCs express TLRs 1-10 at differential levels, with TLR1, TLR2, TLR6

1
2
3 and TLR4 found in significant amounts, making them susceptible to sense bacterial surface
4 lipopolysaccharide (LPS) or lipoteichoic acid (LTA) (Hahn & Liewehr 2007, Carrouel *et al.* 2007,
5 Fawzy El-Sayed *et al.* 2016). In DPSCs, inflammatory conditions modulate the expression level of many
6 of TLRs. For instance, upregulation of TLR1, -2, -4, -5, -8 while downregulation of TLR7, -9, -10 are
7 described when the DPSCs are exposed to a cocktail of pro-inflammatory cytokines (Fawzy El-Sayed
8 *et al.* 2016). Moreover, major intracellular adaptor molecules have been found activated once DPSCs
9 were incubated with LPS. For example, MyD88 has a key role in transducing the signal to the nucleus
10 and triggering downstream effects (He *et al.* 2014, Feng *et al.* 2018, He *et al.* 2013). No study has
11 assessed LTA as a stimulus mimicking infectious conditions where pulp stem cells are faced with Gram-
12 positive bacteria. LTA is released extracellularly in large quantities by cariogenic Gram-positive
13 bacteria when high amounts of sucrose are available (Rølla *et al.* 1980) and could diffuse up to the pulp
14 in case of a breakdown of the enamel and dentine barriers. The aim of this study was to investigate the
15 effect of various concentrations of purified LTA on DPSC proliferation, migration, differentiation,
16 cytokine production and related-TLRs expression. The null hypothesis of this study was that LTA has
17 no effect on the proliferation, migration, cytokine production and osteogenic differentiation of DPSCs.
18
19
20
21
22
23
24
25
26
27
28
29
30
31
32
33
34
35
36

37 **Materials and methods**

38 **Isolation and culture of DPSCs**

39 The procedure used to extract human healthy teeth and dental pulp tissue in this study was approved by
40 the Ethics Committee of the Children's Hospital of Queen Fabiola, Free University of Brussels (CEH
41 24/16). Patients/parents provided their written informed consent.
42
43
44
45
46

47 Pulp tissue was obtained from impacted third molars collected from healthy subjects, 13–16 years of
48 age (n=8). All specimens were free of carious lesions. The coronal pulp was retrieved, minced into small
49 fragments before digestion in a solution of 3 mg/mL collagenase type I (Gibco Life Technologies,
50 Carlsbad, CA, USA) and Alpha Minimum Essential Media (α -MEM, Gibco Life Technologies), for 1 h
51
52
53
54
55
56
57 at 37 °C in 5% CO₂. Cell suspension was filtered through a 70 μ m cell strainer (Greiner Bio-One
58
59
60

1
2
3 GmbH, Frickenhausen, Germany) and pelleted. Dental pulp cells were seeded into 25 cm² cell
4
5
6 culture flasks (Cellstar®, Greiner Bio-One GmbH) and cultured in α-MEM Medium (Gibco Life
7
8
9 Technologies) supplemented with 10% foetal bovine serum (FBS, Sigma-Aldrich, St-Louis,
10
11
12 MO, USA), 0.5% 10,000 mg/mL penicillin/streptomycin (Gibco Life Technologies), 1% 1x
13
14
15 Glutamax (Gibco Life Technologies) at 37 °C in 5% CO₂. The medium was changed every 3 days.
16
17
18
19 When the cells became sub-confluent, they were collected by trypanization (trypsin 0.05% +
20
21
22 EDTA 1x, Gibco Life Technologies) and processed for subsequent passages. Only DPSCs
23
24
25 from passage 2 to 4 were used in all experiments. Cells were plated overnight at a density
26
27
28 varying in each experiment and then stimulated with a range of concentrations of LTA (0.1, 1.0
29
30
31 and 10.0 µg/mL) purified from *Staphylococcus aureus* (LTA-SA, Invivogen, San Diego, CA, USA)
32
33
34 or with LPS (1µg/mL) from *E. coli* O111:B4 (LPS-EB, Invivogen), added to culture medium.
35
36
37 Unstimulated cells (LTA or LPS 0 µg/mL), used as controls, received medium-only stimulation.
38
39
40 HEK293-Blue™-hTLR2 reporter cells (Invivogen, ref. hkb-htlr2) were used to validate *S. aureus*-
41
42
43 derived LTA as TLR2 agonist, according to manufacturer's instructions (Suppl. Fig 1).
44
45
46 The medium was regularly tested for mycoplasma detection (MycoAlert™ PLUS Mycoplasma
47
48
49 Detection Kit, Lonza, Walkersville, MD, USA). The endotoxin content was also analyzed using
50
51
52 a *Limulus amoebocyte* lysate test (Pierce™ LAL Chromogenic Endotoxin Quantitation Kit, Thermo
53
54
55 Fischer scientific, Waltham, MA, USA). Endotoxin content of the DPSC final cultures and in the stock
56
57
58 solution of LTA were below 2.5 EU/mL (threshold equal approx. to 0.5ng/mL of endotoxin) and
59
60
61 mycoplasma testing results confirmed that no contamination was ever detected.

1
2
3 For TLR2 inhibition experiment, DPSCs were co-incubated with 10 μ M of CU-CPT22 (Cat. No. 4884,
4 Bio-Techne, Abingdon, UK) and various concentrations of LTA, for 24 hours. CU-CPT22 is a TLR2/1
5 heterodimer antagonist with the ability to inhibit TLR2-mediated proinflammatory induction.
6
7

8 **Immunofluorescence**

9
10 DPSCs were washed three times with PBS 0.01M before fixation with buffered paraformaldehyde 4%
11 for 15 minutes at room temperature. DPSCs were washed three times and kept in PBS at 4°C until use.
12
13 DPSCs were permeabilized 15 minutes with 0.1% Triton X-100 in PBS and washed out with PBS.
14
15 Coverslips were then incubated overnight at 4°C with primary antibodies (mouse IgG1 anti-human
16 CD44, ref. H4C4, DSHB, 1:10; rabbit mAb anti-human Vimentin, ref. D21H3, 1:100, Cell Signaling
17 Technology, Danvers, MA, USA; rabbit polyclonal IgG anti-human NF- κ B p65, ref. sc-372, Santa Cruz
18 Biotechnology, Dallas, TX, USA) diluted into blocking buffer (PBS with 5% goat serum). The following
19 day, cells were washed and fluorochrome-conjugated secondary antibodies applied for 1.5 hour at room
20 temperature in the dark (goat polyclonal IgG anti-mouse-AF568, ref. A11004 and goat anti-rabbit-FITC,
21 ref. 65-6111, 1:500, Life Technologies). Cells were washed with PBS three times and coverslipped with
22 Prolong[®] Gold Antifade Reagent containing DAPI (ref. 8961, Cell Signaling Technology). Images
23
24 were acquired with an Olympus BX63 microscope (Olympus Life Sciences, Berchem, Belgium)
25 equipped with XM-10 camera (Olympus Life Sciences). For NF- κ B p65 translocation assay,
26 coverslips were mounted in Mowiol containing Hoechst nucleus counterstaining. Labeled cells
27
28 were observed at the 63x magnification on a Leica TCS SP5 confocal microscope (Leica
29 Microsystems CMS GmbH, Wetzlar, Germany) using 488nm laser excitation. Twenty individual
30
31 cells among those that were in focal field were randomly chosen and the spatial relationship
32
33 between the NF- κ B immunoreactivity and nuclear signal was visually assessed. For each
34
35
36
37
38
39
40
41
42
43
44
45
46
47
48
49
50
51
52
53
54
55
56
57
58
59
60

1
2
3 condition of stimulation, 200 events at least were collected. All of the data were recorded at
4
5
6 the same laser and multiplier settings.
7

8 9 **Flow cytometry**

10
11 **DPSC markers analysis:** Briefly, 3×10^6 cells were harvested using 0.05% trypsin/EDTA, followed by
12
13 resuspension in fluorescence-activated cell sorting buffer solution (PBS supplemented with 0.1% BSA,
14
15 0.02% azide, 1 mM EDTA, BD Biosciences). The cells were characterized using a human MSC Analysis
16
17 Kit (Cat. No. 562245, BD Biosciences, Piscataway, NJ, USA) according to the manufacturer's protocol.
18
19 The kit includes the MSC positive antibody cocktail (FITC mouse Anti-Human CD90, APC Mouse
20
21 Anti-Human CD73, PerCP-Cy5.5 Mouse Anti-Human CD105) and negative MSC antibody cocktail (PE
22
23 CD34, PE CD45, PE CD11b, PE CD19 and PE HLA-DR).
24
25

26
27 **Apoptosis analysis:** DPSCs were seeded in 6-well plates (Greiner Bio-One GmbH) at a density of 2×10^5
28
29 cells/well and allowed to reach full confluence. Then, the samples were incubated in 3mL/well media
30
31 containing different concentrations of LTA or LPS. After 24h, the cells were trypsinized, centrifuged
32
33 and resuspended in the medium. The cells were double-stained with PE-conjugated Annexin-V and 7-
34
35 AAD (Guava Nexin Reagent, Guava Technologies, Hayward, CA, USA). Percentages of live (Annexin-
36
37 V-/7-AAD-), early apoptotic (Annexin-V+/7-AAD-) or late apoptotic and necrotic cells (Annexin-V+/7-
38
39 AAD+ and Annexin-V-/7-AAD+) were determined using flow cytometry. All flow cytometry analysis
40
41 were conducted on a BD FACSCanto II (BD Biosciences, Piscataway), and the data were analyzed by
42
43 FlowJo LLC software (version 9.7.7, Ashland, OR, USA).
44
45

46 47 **RNA isolation**

48
49 Total RNA was extracted using High Pure RNA Isolation Kit (Roche Diagnostic GmbH,
50
51 Mannheim, Germany). RNA concentrations were measured using a spectrophotometer Nanodrop
52
53 1000 (Thermo Scientific, Bleiswijk, Netherlands). One μg of total RNA was used as a template to make
54
55 first-strand complementary DNA by High Capacity cDNA Reverse Transcription Kit according to
56
57
58
59
60

1
2
3 manufacturer's instructions, including DNase treatment (Applied Biosystems, Thermo Fisher Scientific
4
5 Baltics, Vilnius, Lithuania).

7 8 **RT-PCR**

9
10 PCR reactions were performed in a total volume of 20 μ L containing 1 μ L of cDNA, 0.5U
11
12 KAPA2G Fast HotStart DNA polymerase (Kapa Biosystems), 0.2mM dNTP, 0.5 μ M of each
13
14 primer, and 10 μ L KAPA buffer. The PCR conditions were 95°C for 1.5min followed by 35 cycles
15
16 of 30sec at 95°C, 30sec at 60°C and 1min at 72°C, and final extension at 72°C for 5 min. The
17
18 PCR amplification products were submitted to electrophoresis on a 1.2% agarose gel in TAE
19
20 buffer: 40mM Tris, 40mM acetate, 1mM EDTA. Amplicons were visualized after gel exposure
21
22 to 0.5 μ g/mL of ethidium bromide and UV transillumination in a GelDoc apparatus (Bio-Rad
23
24 Laboratories). Primer sequences are listed in Table 1.
25
26
27
28
29
30
31
32
33
34
35

36 37 **qRT-PCR**

38
39 One μ L of cDNA was used to amplify the target genes using specific primer pairs for human TLRs
40
41 (InvivoGen, San Diego, CA, USA) and Takyon SYBR Green amplification kit (Eurogentec, Liège,
42
43 Belgium) according to manufacturer's instructions in the Light Cycler 96 Real-Time PCR
44
45 system (Roche Diagnostics, Mannheim, Germany). Relative gene expression was computed
46
47 using the 2^{-ddCq} method with human GAPDH as housekeeping gene and compared to the
48
49 unstimulated condition (LTA or LPS 0 μ g/mL). Specific amplification was confirmed by melting
50
51 curve analysis.
52
53
54
55
56
57
58
59
60

Cell viability assay

DPSCs were plated at a density of 1×10^4 cells per well and a volume of $100 \mu\text{L}$ in 96-well plate (Greiner Bio-One GmbH). The cells were grown in cell medium culture and allowed to adhere for 12 hours at 37°C in $5\% \text{CO}_2$. The samples were incubated in media containing different concentrations of LTA or LPS. Cell viability was evaluated by the conversion of 3-(4,5-dimethylthiazol-2-yl)-2,5-diphenyl-tetrazolium bromide (MTT) to a purple color product by cellular mitochondria. 24-hours post-stimulation, cells were washed with sterile PBS and then incubated with 0.5 mg/mL ($100 \mu\text{L}/\text{well}$) MTT (VWR, Amresco, OH, USA). Following a 2-hour incubation, the supernatant was removed from the plates and isopropyl alcohol ($100 \mu\text{L}/\text{well}$) was added. The absorbance of MTT was measured using a spectrophotometer (Multiskan Ascent 354 microplate reader, Labsystems, Vantaa, Finland) at 540 nm .

Adhesion assay

Ninety six-well plates (Greiner bio-one GmbH) were coated with $50 \mu\text{L}$ type I collagen (40 mg/L in $1 \times \text{PBS}$ dilution) (Collagen rat tail, Roche Diagnostics GmbH, Mannheim, Germany) overnight at 4°C . The wells were washed twice with $1 \times \text{PBS}$ to remove unbound collagen and blocked with $1\% \text{BSA}$ for 1 hour at 37°C in $5\% \text{CO}_2$. 1×10^4 cells were added to each well in the presence of different concentrations of LTA or LPS. Cells were incubated for 90 min at 37°C in $5\% \text{CO}_2$. The wells were then washed three times with $1 \times \text{PBS}$. The cells were fixed with $200 \mu\text{L}$ 4% paraformaldehyde per well at room temperature for 15 min and washed three times with $1 \times \text{PBS}$. The cells were stained with $100 \mu\text{L}/\text{well}$ 0.1% crystal violet for 10 min at room temperature. The wells were washed three times with ddH_2O prior to the addition of $100 \mu\text{L}$ of 10% acetic acid to each well. The optical density was measured using a spectrophotometer (Multiskan Ascent 354 microplate reader, Labsystems) at 595 nm .

Transwell migration assay

Cell culture inserts with $8 \mu\text{m}$ pores (ThinCert™, Greiner bio-one GmbH) in a 24-well plate (Greiner bio-one GmbH) were used in this experiment. DPSCs (1×10^5 cells per insert) suspended within $400 \mu\text{L}$ of standard medium were seeded onto the membrane of the upper chamber. The cells were allowed to adhere to the filters for 12 hours at 37°C in $5\% \text{CO}_2$. After cell adherence, the lower chamber was filled

1
2
3 with culture medium containing different concentrations of LTA or LPS. 24 hours post-stimulation, non-
4 migrated cells on the upper side of the membrane were removed with a cotton swab. The number of
5 migrated cells on the upper side of the membrane were removed with a cotton swab. The number of
6 migrated DPSCs on the lower side of the membrane was determined via Cell Titer 96[®] AQ_{ueose} One
7 Solution Cell Proliferation Assay (MTS, Promega GmbH, Mannheim, Germany) according to
8 manufacturer's instructions. For this purpose, the medium of the lower chamber of the transwell assay
9 was replaced by standard medium containing 16.7% MTS solution and transwell assays were incubated
10 for 1 h under standard conditions. Finally, medium was transferred to an optical 96-well plate (Greiner
11 bio-one GmbH) and absorbance was measured at 490 nm in a microplate reader (Multiskan Ascent 354
12 microplate reader, Labsystems).

21 **Wound healing assay**

22
23 In total, 2×10^5 DPSCs were seeded into 6-well plate and allowed to reach full confluence. A wound was
24 inflicted by making a scratch through the cell monolayer with a 200 μ L pipette tip. Three parallel
25 horizontal lines and three parallel vertical lines were scratched on the bottom of each well (Greiner Bio-
26 One GmbH) to create 9 intersections. After wounding, cells were washed with PBS to remove debris
27 and then incubated with cell culture medium in the presence of different concentrations of LTA or LPS
28 for 24h. Microphotographs of the scratch were taken at 0, 6, 12, 18 and 24 hours post-wounding. The
29 cultured cells were observed with a phase-contrast microscope (Olympus, Tokyo, Japan). Wound
30 closure rate was determined at each intersection by image analysis using ImageJ (National Institute of
31 Health, Bethesda, MD, USA).

43 **Enzyme-linked immunosorbent assay**

44
45 In total, 2×10^5 DPSCs per well were seeded in 6-well plate and allowed to reach full confluence. Then,
46 the samples were incubated in 3mL/well media containing different concentrations of LTA or LPS.
47 Twenty-four hours post-stimulation, the supernatants were collected and stored at -80 °C until assay.
48 Levels of IL-1 β (Affymetrix eBioscience, Thermo Fisher Scientific), IL-6, IL-8 (CX-CL8), IL-10, IL-
49 12, MCP-1, TNF- α and IFN- γ in the culture supernatants were analyzed using commercially available
50 ELISA kits according to the manufacturer's protocol (Novex[®] Life technologies, Invitrogen). Briefly,
51 96-well plates (ThermoFisher Scientific) were coated overnight at 4°C with capture antibody diluted
52
53
54
55
56
57
58
59
60

1
2
3 1000x in PBS. Plates were washed once with wash buffer and blocked for 2 hours with Reagent Diluent.
4
5 The plates were then washed 4 times again, incubated with detection antibody and the manufacturer's
6 standards as well as the samples were added to the plates for 2 hours. After washing 3-5 times,
7 streptavidin-horseradish peroxidase was added for 45 minutes. The plates were washed 5-7 times and
8
9 incubated with substrate solution (TMB) for 30 minutes. At the end, a stop solution was added and
10
11 optical density was measured using a microplate reader (Multiskan Ascent 354 microplate reader,
12
13 Labsystems) at 450nm.
14
15
16

17 **Differentiation assays**

18 **Osteogenic differentiation**

19
20 DPSCs were seeded in 6-well plate (Greiner Bio-One GmbH) at a density of 2×10^4 cells/well and
21
22 incubated with respective differentiation media. To push toward osteogenic differentiation, DPSCs were
23
24 cultured in basal medium supplemented with 0.1 μ M dexamethasone, 10mM β -glycerophosphate
25
26 (Sigma-Aldrich, St-Louis) and 50 μ g/ml ascorbic acid. DPSCs were differentiated up to 7, 14, 21 and 28
27
28 days replacing the medium every 3 days. The first day and every three days, different concentrations of
29
30 LTA or LPS 1 μ g/mL were added to the differentiation medium. At the indicated times, the cells were
31
32 washed 3 times with 1xPBS and fixed with 4% paraformaldehyde for 15 minutes at room temperature.
33
34 To assess osteogenic induction, Alizarin Red S assay has been used to evaluate the amount of calcium
35
36 deposits in cell culture. The fixative was removed and the cells were washed 3 times with ddH₂O prior
37
38 to staining with 40mM Alizarin Red S (Sigma–Aldrich) 1mL/well, 30 minutes with gentle shaking at
39
40 room temperature. Unbound dye was removed by several washes with ddH₂O. The samples were
41
42 dissolved in 10% acetic acid, were transferred to 1.5mL microcentrifuge tube and were heated at 85 °C
43
44 for 10 minutes. The samples were centrifuged at 16.000g for 15 minutes and then transferred to a new
45
46 tube. 10% ammonium hydroxide was added to neutralize the acid and obtain a pH between 4.1 and 4.5.
47
48 The samples were transferred to 96-well plate (Greiner Bio-One GmbH) in triplicate. Dye was quantified
49
50 spectroscopically at 405 nm extrapolating the concentration using a standard curve.
51
52
53
54
55

56 **Adipogenic differentiation**

1
2
3 DPSCs were seeded in 6-well plate (Greiner Bio-One GmbH) at a density of 2×10^4 cells/well. To push
4 toward adipogenic differentiation, DPSCs were cultured in basal medium supplemented with $1 \mu\text{M}$
5 dexamethasone, 0.5mM IBMX (3-isobutyl-1-methylxanthine, Sigma-Aldrich) and $100 \mu\text{M}$ indomethacin
6 and $10 \mu\text{g/mL}$ insulin. DPSCs were differentiated up to 21 days replacing the medium every 3 days. At
7 the indicated times, the cells were washed 3 times with $1 \times \text{PBS}$ and fixed with 4% paraformaldehyde for
8 15 minutes at room temperature. To assess adipogenic induction, Oil Red O and Soudan black assays
9 have been used to evaluate the amount of lipid deposit in cell culture. The fixative was removed and the
10 cells were washed 3 times with ddH_2O prior to staining with Oil Red O and Soudan black.
11
12
13
14
15
16
17
18
19

20 **Chondrogenic differentiation**

21
22 DPSCs were seeded in 6-well plate (Greiner Bio-One GmbH) at a density of 2×10^4 cells/well. To push
23 toward chondrogenic differentiation, DPSCs were cultured in basal medium supplemented with $0.1 \mu\text{M}$
24 dexamethasone, $100 \mu\text{g/mL}$ sodium pyruvate, 10ng/mL TGF β 3 (Sigma-Aldrich), $50 \mu\text{g/mL}$ acid
25 ascorbic and $10 \mu\text{g/mL}$ insulin. DPSCs were differentiated up to 21 days replacing the medium every 3
26 days. At the indicated times, the cells were washed 3 times with $1 \times \text{PBS}$ and fixed with 4%
27 paraformaldehyde for 15 minutes at room temperature. The extent of chondrogenic differentiation was
28 assessed by staining the cells with 0.1% Safranin-O staining assay. The fixative was removed and the
29 cells were washed 3 times with ddH_2O prior to staining with 0.1% Safranin-O.
30
31
32
33
34
35
36
37
38

39 **Statistical analysis**

40
41 Results were expressed as mean values \pm Standard Error of Mean (SEM) obtained from at least three
42 independent experiments. Each assay was repeated three times on independent batches of
43
44 DPSCs (from different donors). The data collected were statistically analyzed using one-way or two-
45 way ANOVA. The level of significance was set at $p < 0.05$. Tukey post-hoc multiple comparison tests
46 were carried out to determine the differences between groups. The statistical analyses were performed
47 using GraphPad Prism version 7 (GraphPad Software Inc., La Jolla, CA, USA).
48
49
50
51
52
53
54
55
56
57
58
59

60 **Results**

Characterization of adult DPSCs

DPSCs had typical morphology of fibroblast-like cells and expressed high levels of intermediate filaments vimentin and CD44 (Fig. 1A). Common mesenchymal stem cells markers (CD73, CD90 and CD105) were consistently positive, whereas hematopoietic markers (CD34, CD45, CD11b, CD19 and HLA-DR) were negative in all samples tested (Fig. 1B). RT-PCR analysis revealed the expression of stemness-related transcription factors as Oct3/4, Sox2, Nanog and Nestin in DPSCs, which were absent in fully differentiated keratinocytes used as negative control (Fig. 1C). The multipotency of DPSCs was evaluated through incubation with osteogenic, chondrogenic or adipogenic differentiation media. Upon three weeks of differentiation, differentiated DPSCs showed the abilities to secrete either a calcified matrix or high amount of proteoglycans, or to accumulate intracellular lipids (Fig. 1D)

DPSCs express TLR2 and activate NF- κ B pathway upon LTA stimulation

RT-PCR analysis revealed TLR1, TLR2 & TLR6 expression in DPSCs (Fig. 2A). LTA treatment induced nuclear NF- κ B p65 translocation for 0.1 and 1 μ g/mL but not for the highest dose. The amount of translocated NF- κ B p65 in LTA-stimulated DPSCs was however significantly lower than LPS-stimulated DPSCs ($P \leq 0.001$) (Fig. 2B). To assess whether LTA was able to stimulate the expression of its own receptor in DPSCs, TLR2 mRNA expression and associated receptors was measured following 6 hours or 24 hours of LTA exposure. qRT-PCR data revealed that after treatment with different concentrations of LTA, TLR1, -2 or -6 expressions were not modulated at any time (Fig. 2C). However, LPS-stimulated DPSCs significantly upregulated TLR1 ($P \leq 0.05$), TLR2 ($P \leq 0.001$) and TLR6 ($P \leq 0.001$) (Fig. 2C).

LTA stimulates DPSCs proliferation and does not induce cell death

Incubation for 24 hours with LTA induced the proliferation of DPSCs, with the highest proliferation recorded for LTA 1 μ g/mL ($P \leq 0.001$) and 10 μ g/mL ($P \leq 0.01$). Similarly, LPS 1 μ g/mL stimulated the proliferation of DPSCs ($P \leq 0.05$) (Fig. 3A). Intriguingly, this effect was lost for both LTA and LPS at 48-hour, 72-hour and 10-days of stimulation (data not shown). As the number of cells per well is also function of cell death rate, the proportion of viable cells or of cells entering in early apoptosis, late

1
2
3 apoptosis or necrosis was evaluated. Whatever the dose or timing of incubation with LTA or LPS, no
4 changes in proportion of living or apoptotic cells were noticed (Fig. 3B).

7 **LTA influences cell-to-matrix adhesion and accelerates horizontal migration**

9 Treatment with LTA 0.1µg/mL significantly increased adherent cell numbers compared with
10 unstimulated group ($P \leq 0.01$). However, treatment with LTA 1µg/mL, 10µg/mL and LPS 1µg/mL
11 significantly ($P \leq 0.05$) decreased adherent cell numbers compared with the unstimulated group
12 (Fig.4A). A two-chamber transwell system was also used to explore the effect of LTA and LPS on the
13 vertical migratory abilities of DPSCs. The results revealed no difference in the migratory ability upon
14 LTA or LPS stimulation (Fig.4B). The scratch assay was used to investigate the effect of LTA on the
15 horizontal migratory abilities of DPSCs. Treatment with LTA 1µg/mL and LPS 1µg/mL
16 enhanced significantly DPSCs migration toward the scratch area at 18 hours ($P \leq 0.01$) and 24 hours
17 ($P \leq 0.001$) (Fig. 4C). Although the cells started to migrate towards the scratch area 12 hours after it
18 was inflicted in all conditions, the space width closure in LTA 1 µg/mL group was accelerated
19 significantly more than in unstimulated groups.

22 **LTA induces cytokine production in DPSCs**

23 LTA did not induce the production of MCP-1 by DPSCs although LPS did (Fig. 5A). LPS 1 µg/mL,
24 used as a potent inducer of chemokine production, also induced the secretion of IL-8, having no effect
25 on IL-6 secretion. The level of expression of other cytokines such as IL-1β, IL-10, IL-12, TNF-α and
26 IFN-γ was unchanged between LTA-stimulated cells and unstimulated cells (data not shown). However,
27 24 hours after incubation with different concentrations of LTA, the production of IL-6 ($P \leq 0.0001$) and
28 IL-8 increased in dose-dependent manner (Fig. 5B-C). This effect was similarly observed at 48- and 72-
29 hours of LTA incubation (data not shown). To prove that IL-8 secretion was consequent to specific
30 TLR2 binding and signalling, LTA-stimulated cells were co-incubated with CCPT22, a known TLR2/1
31 antagonist. CU-CPT22, at a non-toxic concentration of 10µM, significantly inhibited LTA-induced IL-
32 8 upregulation (Fig. 5D)

35 **LTA does not modulate the osteogenic differentiation**

1
2
3 DPSCs cultured in a specifically formulated medium supporting the differentiation into cells of the
4 osteogenic lineage starts to mineralize the extracellular medium between the 14th and 21st day compared
5 to cells earlier in the differentiation process ($P \leq 0.001$). Cells were co-exposed to this differentiation
6 medium and to increasing concentrations of LTA (Fig. 6, left panel) or LPS 1 $\mu\text{g}/\text{mL}$ (Fig. 6, right
7 panel). There were no significant differences in the amount of calcium deposits at day 21 or 28 of
8 osteogenic differentiation between unstimulated and stimulated cells.
9
10
11
12
13
14
15
16
17

18 **Discussion**

19
20 In the initial steps of dental caries, cariogenic bacteria contained in biofilms produce organic acids
21 lowering pH to values between 5.0 and 5.5, to locally induce the slow demineralization of adjacent
22 enamel. If the enamel barrier becomes disrupted and if the carious process remains untreated, bacteria
23 will progress through the dentine tubules, up to the pulp (Love & Jenkinson 2002). *Streptococcus* spp,
24 *Actinomyces* spp, *Lactobacillus* spp and *Bifidobacterium* spp largely dominate the carious microflora at
25 this early stage and all belong to the Gram-positive classification. *Enterococcus faecalis*, another Gram-
26 positive bacterium expression LTA, easily survives in dentinal tubuli even after careful disinfection or
27 antibioprophyllaxis, and is one of the most common factor associated with post-treatment endodontic
28 disease. In this context, the present study sought to mimic, in a laboratory setting, a clinical-relevant
29 condition where DPSCs would come into direct contact with LTA, a Gram-positive cell surface major
30 component. This is the first study that addresses the effect of clinical relevant concentrations of LTA on
31 DPSCs properties. The results demonstrated that human DPSCs were able to sense extracellular LTA
32 likely through TLR2 basal expression, and consequently able to activate, for a minority of the cells, the
33 NF- κB pathway as a result of receptor ligation. Hence, LTA promoted the proliferation, the horizontal
34 migration and inflammatory cytokine production of DPSCs, without interfering with the osteogenic
35 differentiation abilities of DPSCs. Potentially-activated intracellular pathways driving the observed
36 biological effects were also explored but we were not able to detect any phosphorylation of Akt, p38 or
37 ERK signaling partners (data not shown).
38
39
40
41
42
43
44
45
46
47
48
49
50
51
52
53
54
55
56
57
58
59
60

1
2
3 DPSCs expressed *in vitro* functional TLRs involved in the recognition of LTA or di-/tri-acyl
4 lipopeptides (TLR1, -2 and -6). LTA is widely considered as a relevant TLR2 agonist's ligand. Although
5 Gram-positive LTA is a preferential TLR2 ligand, several lipoproteins from Gram-negative bacteria
6 have also been identified as TLR2 ligands, due to N-terminal sequences containing diacylated or
7 triacylated cysteines (Oliveira-Nascimento *et al.* 2012). Upon LTA stimulation, translocation of NF- κ B
8 p65 subunit to the nucleus was detected in a tiny fraction of cells, attesting for a functional receptor
9 signaling, but to a well lesser extent than with LPS stimulation. Whether LTA would regulate the
10 expression of its own receptors on DPSCs, as already described for LPS and its receptor TLR4 (Liu *et*
11 *al.* 2014) was also tested. The results revealed that LTA did not upregulate the gene expression of TLR1,
12 -2 or -6 in DPSCs, contrary to LPS that was a potent inducer. This suggests that, under infectious
13 conditions, TLR2 upregulation in DPSCs is mostly mediated by exposure to LPS from Gram-negative
14 bacteria than to LTA from Gram-positive bacteria. Unlike pulp stem cells, odontoblasts increase the
15 expression of TLR2 upon LTA stimulation (Durand *et al.* 2006).

16
17
18
19
20
21
22
23
24
25
26
27
28
29
30
31 One of the limitations of the study is the use of a commercially-available LTA purified from
32 *Staphylococcus aureus*, and not from *Streptococcus mutans*, the major cariogenic Gram-positive
33 bacteria that would have more closely mimicked the pathological carious condition. LTAs are present
34 on most, if not all, Gram-positive bacteria including *Streptococcus* spp (Hogg *et al.* 1997, Schneewind
35 & Missiakas 2017). According to their origins and structures, LTAs exhibit differential
36 immunostimulatory potentials, with *Staphylococcus aureus*-derived LTA acting as one of the most
37 potent immunostimulator on peripheral blood mononuclear cells or macrophages (Hermann *et al.* 2002,
38 Hong *et al.* 2014). The experimental design consisted of exposing the cells to increasing concentrations
39 of LTA or to LPS in a separate well serving as a positive control of the read-out. LTA aliquots had an
40 undetectable LPS contamination; so that LPS traces were considered as not responsible for the observed
41 biological effects. Overall, LTA stimulation induced a more moderated response compared to LPS in
42 regards to NF- κ B activation, TLRs upregulation, cell proliferation and migration, and finally cytokine
43 production. While LTA and LPS share many pathogenic properties, there are findings that do not clearly
44 support the role of LTA as a major virulence factor; because quantities of LTA (μ g to mg/mL) necessary
45
46
47
48
49
50
51
52
53
54
55
56
57
58
59
60

1
2
3 to induce the secretion of proinflammatory mediators are many times greater than those of LPS (ng/mL).
4
5 On a weight-for-weight basis, LTA seems less immunogenic than LPS. Accordingly, this report supports
6
7 the hypothesis that LTA is a weaker factor of virulence in comparison to LPS (Parolia *et al.* 2014),
8
9 although DPSCs are able to sense Gram-positive derived LTA and upon ligation, they mainly trigger
10
11 the secretion of such IL-8 and IL-6.
12

13 LTA-stimulated DPSCs reached a higher proliferation level compared to unstimulated cells, this result
14
15 was linked to a real increase in cell number upon TLR2 ligation and not a decreased number of cells
16
17 undergoing apoptosis or necrosis in culture conditions. The data contrasts with previous information
18
19 demonstrating a high apoptosis rate in dental pulp cells exposed to *Streptococcus mutans*-LTA (Wang
20
21 *et al.* 2001). Of note, the concentrations of LTA used in the present study were much lower than in
22
23 Wang *et al.* (2001) and probably reflect more the clinical reality (Wang *et al.* 2001). Intriguingly,
24
25 adhesion of DPSCs to collagen matrix was affected in a differential way according to LTA
26
27 concentrations; with the lowest dose (0.1 µg/mL) the adherence was increased and the highest doses (1
28
29 and 10 µg/mL) slightly decreased. Whereas vertical migration through a Boyden chamber was
30
31 unaffected at any concentrations investigated, the scratch assay clearly demonstrated that DPSCs
32
33 stimulated with LTA 1µg/mL enhanced their mobility. Also, LPS-stimulated DPSCs showed enhanced
34
35 horizontal migration compared with control, this confirmed previous data on the effect of LPS (Li *et al.*
36
37 2014). A short-term wound-healing assay (<24h), as performed, will most likely assess migration and
38
39 to a lesser extent proliferation (Kramer *et al.* 2013). Nevertheless, it cannot be ruled out that increased
40
41 proliferation and/or the production of cytokines or chemokines following TLR2 activation contributes
42
43 to the observed migratory phenotype. A well-recognized consequence of TLR2 ligation is the
44
45 upregulation of cytokine synthesis in various cell types (Cook *et al.* 2004), including dental pulp cells
46
47 (Durand *et al.* 2006, Staquet *et al.* 2008). Noteworthy, the profile or levels of secreted cytokines differed
48
49 slightly between LPS- and LTA-stimulated DPSCs, as suggested in other cell types (Finney *et al.* 2012).
50
51 In this study, it is shown that LTA did not influence the speed of osteogenic/odontoblastic differentiation
52
53 when DPSCs were exposed to the appropriate medium. Unexpectedly, although the experiment was
54
55 repeated three times, it was not provided to replicate the findings that LPS promotes the odontoblastic
56
57 differentiation of DPSCs (He *et al.* 2015). This contradictory data may result from slight differences in
58
59
60

1
2
3 the differentiation protocol, cell confluency at the start of induction or the serotype of *E. coli* used for
4 LPS isolation. Supporting a variable response towards LPS stimulation, the osteogenic differentiation
5 of dental pulp cell lines (Nomiya *et al.* 2007), periodontal ligament stem cells (Albiero *et al.* 2017)
6 or dental follicle cells (Morscizek *et al.* 2012) is either inhibited or unaffected accordingly.
7
8
9
10
11
12

13 **Conclusion**

14
15 This paper describes an (immuno-)stimulatory effect of LTA on human DPSCs. It demonstrates that
16 pulp stem cells do sense the Gram-positive cell wall component and can initiate NF- κ B-dependent
17 signaling leading to modest proliferation, enhanced migration and significant cytokine secretion.
18 Despite the use of LTA derived from a non-oral bacteria (*S. aureus*), the present study reports that
19 DPSCs respond to the presence of oral Gram-positive bacteria, such as *Streptococcus mutans*, reaching
20 the pulp cavity during a carious process (Liu *et al.* 2014). Such findings help to understand how DPSCs
21 behave following contact with oral cariogenic bacteria and can serve as a catalyst for designing novel
22 strategies to boost regenerative properties of DPSCs despite an inflammatory or infectious environment.
23
24
25
26
27
28
29
30
31
32
33
34
35
36
37
38
39
40
41
42
43
44
45
46
47
48
49
50
51
52
53
54
55
56
57
58
59
60

37 **Acknowledgements**

40 The authors wish to thank Professors Patricia Renard, Astrid Vanden Abbeele and Yves Poumay
41 for providing respectively NF- κ B p65 antibody, mesenchymal stem cell markers and RNA library
42 from human keratinocytes. We warmly thank Prof. Jacques Gilloteaux for English proof-
43 reading and Pascale Deblandre, Noël Ninanne and Benoit Balau for their technical assistance. This
44 research used the microscope facilities of the “Plateforme Technologique Morphologie-Imagerie” of
45 UNamur.
46
47
48
49
50
51
52
53
54
55
56
57
58
59
60

59 **Conflict of Interest**

The authors have stated explicitly that there are no conflicts of interest in connection with this article.

For Peer Review

1
2
3
4
5
6
7
8
9
10
11
12
13
14
15
16
17
18
19
20
21
22
23
24
25
26
27
28
29
30
31
32
33
34
35
36
37
38
39
40
41
42
43
44
45
46
47
48
49
50
51
52
53
54
55
56
57
58
59
60

References

- Albiero ML, Amorim BR, Casati MZ, Sallum EA, Nociti FH Junior, Silvério KG (2017) Osteogenic potential of periodontal ligament stem cells are unaffected after exposure to lipopolysaccharide. *Brazilian Oral Research* **31**:e17.
- Bowen WH, Koo H (2011) Biology of Streptococcus mutans-derived glucosyltransferases: role in extracellular matrix formation of cariogenic biofilms. *Caries Research* **45**, 69-86.
- Carrouel F, Staquet MJ, Keller JF, Baudouin C, Msika P, Bleicher F, Alliot-Licht B, Farges JC (2013) Lipopolysaccharide-binding protein inhibits Toll-like receptor 2 activation by lipoteichoic acid in human odontoblast-like cells. *Journal of Endodontics* **39**, 1008-14.
- Cook DN, Pisetsky DS, Schwartz DA (2004) Toll-like receptors in the pathogenesis of human disease. *Nature Immunology* **5**, 975-9.
- Cooper PR, Takahashi Y, Graham LW, Simon S, Imazato S, Smith AJ (2010) Inflammation-regeneration interplay in the dentine-pulp complex. *Journal of Dentistry* **38**, 687-97.
- Durand SH, Flacher V, Roméas A, Carrouel F, Colomb E, Vincent C, Magloire H, Couble ML, Bleicher F, Staquet MJ, Lebecque S, Farges JC (2006) Lipoteichoic acid increases TLR and functional chemokine expression while reducing dentin formation in in vitro differentiated human odontoblasts. *Journal of Immunology* **176**, 2880-7.
- Fawzy El-Sayed KM, Klingebiel P, Dörfer CE (2016) Toll-like Receptor Expression Profile of Human Dental Pulp Stem/Progenitor Cells. *Journal of Endodontics* **42**, 413-7.
- Feng G, Zheng K, Cao T, Zhang J, Lian M, Huang D, Wei C, Gu Z, Feng X (2018) Repeated stimulation by LPS promotes the senescence of DPSCs via TLR4/MyD88-NF- κ B-p53/p21 signaling. *Cytotechnology* **70**, 1023-35.
- Finney SJ, Leaver SK, Evans TW, Burke-Gaffney A (2012) Differences in lipopolysaccharide- and lipoteichoic acid-induced cytokine/chemokine expression. *Intensive Care Medicine* **38**, 324-32.
- Goldberg M, Farges JC, Lacerda-Pinheiro S, Six N, Jegat N, Decup F, Septier D, Carrouel F, Durand S, Chaussain-Miller C, Denbesten P, Veis A, Poliard A (2008) Inflammatory and immunological aspects of dental pulp repair. *Pharmacological Research* **58**, 137-47.

- 1
2
3 Gronthos S, Mankani M, Brahim J, Robey PG, Shi S (2000) Postnatal human dental pulp stem cells
4 (DPSCs) in vitro and in vivo. *Proceeding of the National Academy Science USA* **97**, 13625-30.
5
6
7 Hahn CL, Liewehr FR (2007) Innate immune responses of the dental pulp to caries. *Journal of*
8
9 *Endodontics* **33**, 643-51.
10
11 He W, Qu T, Yu Q, Wang Z, Lv H, Zhang J, Zhao X, Wang P (2013) LPS induces IL-8 expression
12
13 through TLR4, MyD88, NF-kappaB and MAPK pathways in human dental pulp stem cells.
14
15
16
17 *International Endodontic Journal* **46**, 128-36.
18
19 He W, Wang Z, Zhou Z, Zhang Y, Zhu Q, Wei K, Lin Y, Cooper PR, Smith AJ, Yu Q (2015)
20
21 Lipopolysaccharide enhances Wnt5a expression through Toll-like receptor 4, myeloid differentiating
22
23 factor 88, phosphatidylinositol 3-OH kinase/AKT and nuclear factor kappa B pathways in human dental
24
25 pulp stem cells. *Journal of Endodontics* **40**, 69-75.
26
27
28 He W, Wang Z, Luo Z, Yu Q, Jiang Y, Zhang Y, Zhou Z, Smith AJ, Cooper PR (2015) LPS promote
29
30 the odontoblastic differentiation of human dental pulp stem cells vis MAPK signaling pathway. *Journal*
31
32 *of cell Physiology* **230**, 554-61.
33
34
35 Hermann C, Spreitzer I, Schröder NW, Morath S, Lehner MD, Fischer W, Schütt C, Schumann R,
36
37 Hartung T (2002) Cytokine induction by purified lipoteichoic acids from various bacterial species – role
38
39 of LBP, sCD14, CD14 and failure to induce IL-12 and subsequent IFN-gamma release. *European*
40
41 *Journal of Immunology* **32**, 541-51.
42
43
44 Hogg SD, Whiley RA, De Soet JJ (1997) Occurrence of lipoteichoic acid in oral streptococci.
45
46 *International Journal of Systematic Bacteriology* **47**, 62-6.
47
48 Hong SW, Baik JE, Kang SS, Yun CH, Seo DG, Han SH (2014) Lipoteichoic acid of *Streptococcus*
49
50 *mutans* interacts with Toll-like receptor 2 through the lipid moiety for induction of inflammatory
51
52 mediators in murine macrophages. *Molecular Immunology* **57**, 284-91.
53
54
55 Jiang S, Li X, Hess NJ, Guan Y, Tapping RI (2016) TLR10 Is a Negative Regulator of Both MyD88-
56
57 Dependent and -Independent TLR Signaling. *Journal of Immunology* **196**, 3834-41.
58
59
60 Kramer N, Walzl A, Unger C, Rosner M, Krupitza G, Hengstschläger M, Dolznig H (2013) In vitro cell
migration and invasion assays. *Mutation Research* **752**, 10-24.

- 1
2
3 Li D, Fu L, Zhang Y, Yu Q, Ma F, Wang Z, Luo Z, Zhou Z, Cooper PR, He W (2014) The effects of
4 LPS on adhesion and migration of human dental pulp cells in vitro. *Journal of Dentistry* **42**, 1327-34.
5
6 Liu Y, Gao Y, Zhan X, Cui L, Xu S, Ma D, Yue J, Wu B, Gao J (2014) TLR4 activation by
7 lipopolysaccharide and *Streptococcus mutans* induces differential regulation of proliferation and
8 migration in human dental pulp stem cells. *Journal of Endodontics* **40**, 1375-81.
9
10 Love RM, Jenkinson HF (2002) Invasion of dentinal tubules by oral bacteria. *Critical Reviews in Oral*
11 *Biology and Medicine* **13**, 171-83.
12
13 Morath S, von Aulock S, Hartung T (2005) Structure/function relationships of lipoteichoic acids.
14 *Journal of Endotoxin Research* **11**, 348-56.
15
16 Morszeck CO, Drees J, Gosau M (2012) Lipopolysaccharide from *Escherichia coli* but not from
17 *Porphyromonas gingivalis* induce pro-inflammatory cytokines and alkaline phosphatase in dental
18 follicle cells. *Archives of Oral Biology* **57**, 1595-601.
19
20 Nomiyama K, Kitamura C, Tsujisawa T, Nagayoshi M, Morotomi T, Terashita M, Nishihara T (2007)
21 Effects of lipopolysaccharide on newly established rat dental pulp-derived cell line with odontoblastic
22 properties. *Journal of Endodontics* **33**, 1187-91.
23
24 Oliveira-Nascimento L, Massari P, Wetzler LM (2012) The role of TLR2 in infection and immunity.
25 *Frontiers in Immunology* **3**, 79.
26
27 Parolia A, Gee LS, de Moraes Porto IC, Mohan M (2014) Role of Cytokines, Endotoxins (LPS), and
28 Lipoteichoic Acid (LTA) in Endodontic Infection. *Journal of Dent Health, Oral Disorders and Therapy*
29 **2**, 1-5.
30
31 Podtar PD, Jethmalani YD (2015) Human dental pulp stem cells: Applications in future regenerative
32 medicine. *World Journal of Stem Cells* **7**, 839-51.
33
34 Roach JC, Glusman G, Rowen L, Kaur A, Purcell MK, Smith KD, Hood LE, Aderem A (2005) The
35 evolution of vertebrate Toll-like receptors. *Proceeding of the National Academy of Sciences USA* **102**,
36 9577-82.
37
38 Rølla G, Oppermann RV, Bowen WH, Ciardi JE, Knox KW (1980) High amounts of lipoteichoic acid
39 in sucrose-induced plaque in vivo. *Caries Research* **14**, 235-8.
40
41
42
43
44
45
46
47
48
49
50
51
52
53
54
55
56
57
58
59
60

1
2
3 Schneewind O, Missiakas D (2017) Lipoteichoic Acid Synthesis and Function in Gram-Positive
4 Bacteria. In book: *Biogenesis of Fatty Acids, Lipids and Membranes*. Springer, Cham, Swiss.

5
6
7 Staquet MJ, Durand SH, Colomb E, Roméas A, Vincent C, Bleicher F, Lebecque S, Farges JC (2008)
8
9 Different roles of odontoblasts and fibroblasts in immunity. *Journal of Dental Research* **87**, 256-61.

10
11 Wang PL, Shirasu S, Daito M, Ohura K (2001) Streptococcus mutans lipoteichoic acid-induced
12
13 apoptosis in cultured dental pulp cells from Human deciduous teeth. *Biochemical and Biophysical*
14
15 *Research Communications* **281**, 957-61.

16
17
18 Yu C, Abbott PV (2007) An overview of the dental pulp: its functions and responses to injury. *Australian*
19
20 *Dental Journal* **52**, S4-16.

21
22
23
24
25
26
27
28
29
30
31
32
33
34
35
36
37
38
39
40
41
42
43
44
45
46
47
48
49
50
51
52
53
54
55
56
57
58
59
60

For Peer Review

Figure Legends

Figure 1 Phenotypic characterization of DPSCs. (A) Double immunofluorescent labeling showing cytoplasmic expression of vimentin (green) and CD44 (red) counterstained with DAPI. All cells in the field-of-view have a spindle-shaped morphology and co-express CD44 and vimentin. Scale bars = 20 μm (B) Flow cytometric analysis confirms the expression of mesenchymal stem cell markers CD73, CD90, CD105 by DPSCs, without expression of CD11b, CD19, CD34, CD45 and HLA-DR. The percentage of positive cells for each marker is shown. The unlabeled cells and the IgG isotype control are represented as red and blue curves respectively. (C) The expression of stemness-related transcription factors Oct3/4, Sox2, Nanog and Nestin is detected in DPSCs (d) and absent in differentiated keratinocytes (k). (D) Upon 3 weeks of exposure to respective differentiation medium, DPSCs are able to commit towards osteogenic (Alizarin Red), chondrogenic (Safranin O) or adipogenic (Oil Red O and Soudan Black) lineages.

Figure 2 Expression of TLR1, -2 and -6 and NFKB p65 activation upon LTA stimulation. (A) TLR1, TLR2 and TLR6 mRNAs are expressed under basal conditions by DPSCs. (B) Unstimulated DPSCs show a diffuse cytoplasmic NFKB p65 labeling while significant nuclear translocation is observed upon LPS exposure. In DPSCs exposed to LTA 0.1 and 1 $\mu\text{g}/\text{mL}$, few translocations of p65 to the nucleus are observed. Scale bars = 25 μm (left panel) or 50 μm (central and right panels). Quantification of p65-immunoreactive nuclei shows that LPS 1 $\mu\text{g}/\text{mL}$ and LTA 0.1 $\mu\text{g}/\text{mL}$ significantly increase the translocation when compared to unstimulated cells. (C) LTA does not modulate the gene expression of TLR1, TLR2 or TLR6 after 6 hours or 24 hours of exposure. LPS, used as positive control, significantly upregulates TLR1, TLR2 and TLR6 mRNA expression. Data are presented as mean \pm SEM. * $p \leq 0.05$, ** $p \leq 0.01$, **** $p \leq 0.0001$ LPS compared to unstimulated and LTA; # $p \leq 0.05$, ## $p \leq 0.01$ LTA compared to unstimulated cells (0 $\mu\text{g}/\text{mL}$).

Figure 3 Viability assessment of DPSCs and cell death upon LTA stimulation. (A) 24 hours of exposure to LTA 1 and 10 $\mu\text{g}/\text{mL}$ significantly increases the number of living cells in the wells. Similarly, LPS 1 $\mu\text{g}/\text{mL}$ for 24 hours stimulates the cell viability. Cell viability rate (%) is expressed as a percentage of O.D. of MTT reaction related to the unstimulated condition. (B) Proportion of living or dead cells (%) is quantified by FACS expression of markers Annexin-V and/or 7-AAD.

1
2
3 Results are expressed as a percentage of total labeled cells. Annexin-V negative and 7-AAD negative
4 cells are considered as living cells; Annexin-V positive and 7-AAD negative cells are considered as
5 early apoptotic cells; 7-AAD positive cells are considered as late apoptotic or necrotic cells. 24 hours
6 of exposure to LTA does not modify the proportion of living, early apoptotic or late apoptotic cells.
7
8
9
10
11 LPS 1 $\mu\text{g}/\text{mL}$ for 24 hours does not induce significant cell death compared to unstimulated condition.
12
13 Data are presented as mean \pm SEM. * $p \leq 0.05$, ** $p \leq 0.01$, *** $p \leq 0.001$ LPS-stimulated or LTA-
14 stimulated DPSCs compared to unstimulated cells (0 $\mu\text{g}/\text{mL}$). Each graph illustrates one representative
15
16
17
18
19 experiment out of three independent experiments.

20 **Figure 4** Effect of LTA on adhesion and migration of DPSCs. (A) The adhesion ability of DPSCs
21 exposed for 24 hours to various concentrations of LTA and LPS 1 $\mu\text{g}/\text{mL}$. Treatment with LTA
22 0.1 $\mu\text{g}/\text{mL}$ increased cell adherence to collagen matrix compared with unstimulated group. However,
23
24
25
26
27
28
29
30
31
32
33
34
35
36
37
38
39
40
41
42
43
44
45
46
47
48
49
50
51
52
53
54
55
56
57
58
59
60
61
62
63
64
65
66
67
68
69
70
71
72
73
74
75
76
77
78
79
80
81
82
83
84
85
86
87
88
89
90
91
92
93
94
95
96
97
98
99
100
101
102
103
104
105
106
107
108
109
110
111
112
113
114
115
116
117
118
119
120
121
122
123
124
125
126
127
128
129
130
131
132
133
134
135
136
137
138
139
140
141
142
143
144
145
146
147
148
149
150
151
152
153
154
155
156
157
158
159
160
161
162
163
164
165
166
167
168
169
170
171
172
173
174
175
176
177
178
179
180
181
182
183
184
185
186
187
188
189
190
191
192
193
194
195
196
197
198
199
200
201
202
203
204
205
206
207
208
209
210
211
212
213
214
215
216
217
218
219
220
221
222
223
224
225
226
227
228
229
230
231
232
233
234
235
236
237
238
239
240
241
242
243
244
245
246
247
248
249
250
251
252
253
254
255
256
257
258
259
260
261
262
263
264
265
266
267
268
269
270
271
272
273
274
275
276
277
278
279
280
281
282
283
284
285
286
287
288
289
290
291
292
293
294
295
296
297
298
299
300
301
302
303
304
305
306
307
308
309
310
311
312
313
314
315
316
317
318
319
320
321
322
323
324
325
326
327
328
329
330
331
332
333
334
335
336
337
338
339
340
341
342
343
344
345
346
347
348
349
350
351
352
353
354
355
356
357
358
359
360
361
362
363
364
365
366
367
368
369
370
371
372
373
374
375
376
377
378
379
380
381
382
383
384
385
386
387
388
389
390
391
392
393
394
395
396
397
398
399
400
401
402
403
404
405
406
407
408
409
410
411
412
413
414
415
416
417
418
419
420
421
422
423
424
425
426
427
428
429
430
431
432
433
434
435
436
437
438
439
440
441
442
443
444
445
446
447
448
449
450
451
452
453
454
455
456
457
458
459
460
461
462
463
464
465
466
467
468
469
470
471
472
473
474
475
476
477
478
479
480
481
482
483
484
485
486
487
488
489
490
491
492
493
494
495
496
497
498
499
500
501
502
503
504
505
506
507
508
509
510
511
512
513
514
515
516
517
518
519
520
521
522
523
524
525
526
527
528
529
530
531
532
533
534
535
536
537
538
539
540
541
542
543
544
545
546
547
548
549
550
551
552
553
554
555
556
557
558
559
560
561
562
563
564
565
566
567
568
569
570
571
572
573
574
575
576
577
578
579
580
581
582
583
584
585
586
587
588
589
590
591
592
593
594
595
596
597
598
599
600
601
602
603
604
605
606
607
608
609
610
611
612
613
614
615
616
617
618
619
620
621
622
623
624
625
626
627
628
629
630
631
632
633
634
635
636
637
638
639
640
641
642
643
644
645
646
647
648
649
650
651
652
653
654
655
656
657
658
659
660
661
662
663
664
665
666
667
668
669
670
671
672
673
674
675
676
677
678
679
680
681
682
683
684
685
686
687
688
689
690
691
692
693
694
695
696
697
698
699
700
701
702
703
704
705
706
707
708
709
710
711
712
713
714
715
716
717
718
719
720
721
722
723
724
725
726
727
728
729
730
731
732
733
734
735
736
737
738
739
740
741
742
743
744
745
746
747
748
749
750
751
752
753
754
755
756
757
758
759
760
761
762
763
764
765
766
767
768
769
770
771
772
773
774
775
776
777
778
779
780
781
782
783
784
785
786
787
788
789
790
791
792
793
794
795
796
797
798
799
800
801
802
803
804
805
806
807
808
809
810
811
812
813
814
815
816
817
818
819
820
821
822
823
824
825
826
827
828
829
830
831
832
833
834
835
836
837
838
839
840
841
842
843
844
845
846
847
848
849
850
851
852
853
854
855
856
857
858
859
860
861
862
863
864
865
866
867
868
869
870
871
872
873
874
875
876
877
878
879
880
881
882
883
884
885
886
887
888
889
890
891
892
893
894
895
896
897
898
899
900
901
902
903
904
905
906
907
908
909
910
911
912
913
914
915
916
917
918
919
920
921
922
923
924
925
926
927
928
929
930
931
932
933
934
935
936
937
938
939
940
941
942
943
944
945
946
947
948
949
950
951
952
953
954
955
956
957
958
959
960
961
962
963
964
965
966
967
968
969
970
971
972
973
974
975
976
977
978
979
980
981
982
983
984
985
986
987
988
989
990
991
992
993
994
995
996
997
998
999
1000

47 **Figure 5** Effect of LTA on cytokine release. Cytokine content is assessed by ELISA in the supernatant
48 of in vitro culture of DPSCs stimulated for 24h with various concentrations of LTA or LPS 1 $\mu\text{g}/\text{mL}$.
49
50
51
52
53
54
55
56
57
58
59
60
61
62
63
64
65
66
67
68
69
70
71
72
73
74
75
76
77
78
79
80
81
82
83
84
85
86
87
88
89
90
91
92
93
94
95
96
97
98
99
100
101
102
103
104
105
106
107
108
109
110
111
112
113
114
115
116
117
118
119
120
121
122
123
124
125
126
127
128
129
130
131
132
133
134
135
136
137
138
139
140
141
142
143
144
145
146
147
148
149
150
151
152
153
154
155
156
157
158
159
160
161
162
163
164
165
166
167
168
169
170
171
172
173
174
175
176
177
178
179
180
181
182
183
184
185
186
187
188
189
190
191
192
193
194
195
196
197
198
199
200
201
202
203
204
205
206
207
208
209
210
211
212
213
214
215
216
217
218
219
220
221
222
223
224
225
226
227
228
229
230
231
232
233
234
235
236
237
238
239
240
241
242
243
244
245
246
247
248
249
250
251
252
253
254
255
256
257
258
259
260
261
262
263
264
265
266
267
268
269
270
271
272
273
274
275
276
277
278
279
280
281
282
283
284
285
286
287
288
289
290
291
292
293
294
295
296
297
298
299
300
301
302
303
304
305
306
307
308
309
310
311
312
313
314
315
316
317
318
319
320
321
322
323
324
325
326
327
328
329
330
331
332
333
334
335
336
337
338
339
340
341
342
343
344
345
346
347
348
349
350
351
352
353
354
355
356
357
358
359
360
361
362
363
364
365
366
367
368
369
370
371
372
373
374
375
376
377
378
379
380
381
382
383
384
385
386
387
388
389
390
391
392
393
394
395
396
397
398
399
400
401
402
403
404
405
406
407
408
409
410
411
412
413
414
415
416
417
418
419
420
421
422
423
424
425
426
427
428
429
430
431
432
433
434
435
436
437
438
439
440
441
442
443
444
445
446
447
448
449
450
451
452
453
454
455
456
457
458
459
460
461
462
463
464
465
466
467
468
469
470
471
472
473
474
475
476
477
478
479
480
481
482
483
484
485
486
487
488
489
490
491
492
493
494
495
496
497
498
499
500
501
502
503
504
505
506
507
508
509
510
511
512
513
514
515
516
517
518
519
520
521
522
523
524
525
526
527
528
529
530
531
532
533
534
535
536
537
538
539
540
541
542
543
544
545
546
547
548
549
550
551
552
553
554
555
556
557
558
559
560
561
562
563
564
565
566
567
568
569
570
571
572
573
574
575
576
577
578
579
580
581
582
583
584
585
586
587
588
589
590
591
592
593
594
595
596
597
598
599
600
601
602
603
604
605
606
607
608
609
610
611
612
613
614
615
616
617
618
619
620
621
622
623
624
625
626
627
628
629
630
631
632
633
634
635
636
637
638
639
640
641
642
643
644
645
646
647
648
649
650
651
652
653
654
655
656
657
658
659
660
661
662
663
664
665
666
667
668
669
670
671
672
673
674
675
676
677
678
679
680
681
682
683
684
685
686
687
688
689
690
691
692
693
694
695
696
697
698
699
700
701
702
703
704
705
706
707
708
709
710
711
712
713
714
715
716
717
718
719
720
721
722
723
724
725
726
727
728
729
730
731
732
733
734
735
736
737
738
739
740
741
742
743
744
745
746
747
748
749
750
751
752
753
754
755
756
757
758
759
760
761
762
763
764
765
766
767
768
769
770
771
772
773
774
775
776
777
778
779
780
781
782
783
784
785
786
787
788
789
790
791
792
793
794
795
796
797
798
799
800
801
802
803
804
805
806
807
808
809
810
811
812
813
814
815
816
817
818
819
820
821
822
823
824
825
826
827
828
829
830
831
832
833
834
835
836
837
838
839
840
841
842
843
844
845
846
847
848
849
850
851
852
853
854
855
856
857
858
859
860
861
862
863
864
865
866
867
868
869
870
871
872
873
874
875
876
877
878
879
880
881
882
883
884
885
886
887
888
889
890
891
892
893
894
895
896
897
898
899
900
901
902
903
904
905
906
907
908
909
910
911
912
913
914
915
916
917
918
919
920
921
922
923
924
925
926
927
928
929
930
931
932
933
934
935
936
937
938
939
940
941
942
943
944
945
946
947
948
949
950
951
952
953
954
955
956
957
958
959
960
961
962
963
964
965
966
967
968
969
970
971
972
973
974
975
976
977
978
979
980
981
982
983
984
985
986
987
988
989
990
991
992
993
994
995
996
997
998
999
1000

1
2
3 There is a greater increase of IL-8 production after LPS stimulation. (D) CU-CPT-22, a specific TLR2
4 antagonist, significantly inhibits LTA-induced IL-8 upregulation. Data are presented as mean \pm SEM.
5
6
7 * $p \leq 0.05$, *** $p \leq 0.001$, **** $p \leq 0.0001$ LPS-stimulated or LTA-stimulated DPSCs compared to
8
9 unstimulated cells (0 $\mu\text{g}/\text{mL}$); # $p \leq 0.05$, ## $p \leq 0.01$, for comparisons between CU-CPT-22 and
10
11 DMSO-treated DPSCs. Each graph illustrates one representative experiment out of three independent
12
13 experiments.
14

15 **Figure 6** Influence of LTA on the osteogenic potential of DPSCs. The osteogenic differentiation of
16 DPSCs exposed to different concentrations of LTA or LPS 1 $\mu\text{g}/\text{mL}$ is assessed by the quantification of
17 extracellular calcium deposits. Once osteogenic differentiation medium is added to DPSCs, the cells
18 progressively mineralize the extracellular matrix with a drastic induction of calcium deposition
19 between the 14th and 21th day of differentiation. Quantitative analysis shows that LTA, at any dose,
20 does not change the amount of calcium deposits over time. Similarly, there is no statistical difference
21 when DPSCs are exposed to LPS 1 $\mu\text{g}/\text{mL}$ during the differentiation process. Data are presented as
22 mean \pm SEM. Each graph illustrates one representative experiment out of three independent
23
24 experiments.
25
26
27
28
29
30
31
32
33
34
35
36

37 **Supplementary Figures**

38 **Supplementary Figure 1** HEK-BlueTM-hTLR2 reporter cells expressing human TLR2 and secreted
39 alkaline phosphatase (SEAP) were used to validate *S. aureus* LTA as hTLR2 agonist. The
40 SEAP reporter gene is placed under the control of the IFN- β minimal promoter fused to five NF- κB
41 and AP-1-binding sites. Upon agonist stimulation, the intracellular receptor domains recruit and
42 activate NF- κB and AP-1 which subsequently induce the production of SEAP, whose activity can be
43 detected using HEK-Blue detection culture medium at an optical density (O.D.) of 630nm. 50.000
44
45 HEK-hTLR2 cells were seeded in 24-well and stimulated with LTA (0.0 ; 0.1 ; 1.0 ; 10 $\mu\text{g}/\text{mL}$) or LPS
46
47 (1 $\mu\text{g}/\text{mL}$) for 24 hours. Upon LTA stimulation, there is a dose-dependent activation of TLR2
48
49 signaling in HEK-BlueTM-hTLR2 reporter cells.
50
51
52
53
54
55
56
57
58
59
60

Table 1 Primer sequences for RT-PCR and qRT-PCR.

Primer	Sequence forward (5'-3')	Sequence reverse (5'-3')	Amplicon size (bp)
GAPDH	CTGGGCTACACTGAGCACC	AAGTGGTCGTTGAGGGCAATG	101
Oct3/4	GGAGAGCAACTCCGATGG	TTGATGTCTGGGACTCCTC	110
Nanog	TTTGTGGGCTGAAGAAAACCT	AGGGCTGTCCTGAATAAGCAG	116
Nestin	CTGCTACCCTTGAGACACCTG	GGGCTCTGATCTCTGCATCTAC	141
Sox2	GCCGAGTGGAACCTTTTGTCG	GGCAGCGTGTACTTATCCTTCT	155
TLR1	TATCTGAGCTTTGGACTTCTGACAT	TCAAGGAAGTGCCAGAATAATCA	728
TLR2	CCCTGGGCAGTCTGAACATT	GCCTCCGGATTGTTAAGCTTT	656
TLR6	CCTACCGCTGAAAACCAAAGTCTTA	CAAGGTGAAGGGTTTTTGCATTC	457

1
2
3
4
5
6
7
8
9
10
11
12
13
14
15
16
17
18
19
20
21
22
23
24
25
26
27
28
29
30
31
32
33
34
35
36
37
38
39
40
41
42
43
44
45
46
47
48
49
50
51
52
53
54
55
56
57
58
59
60

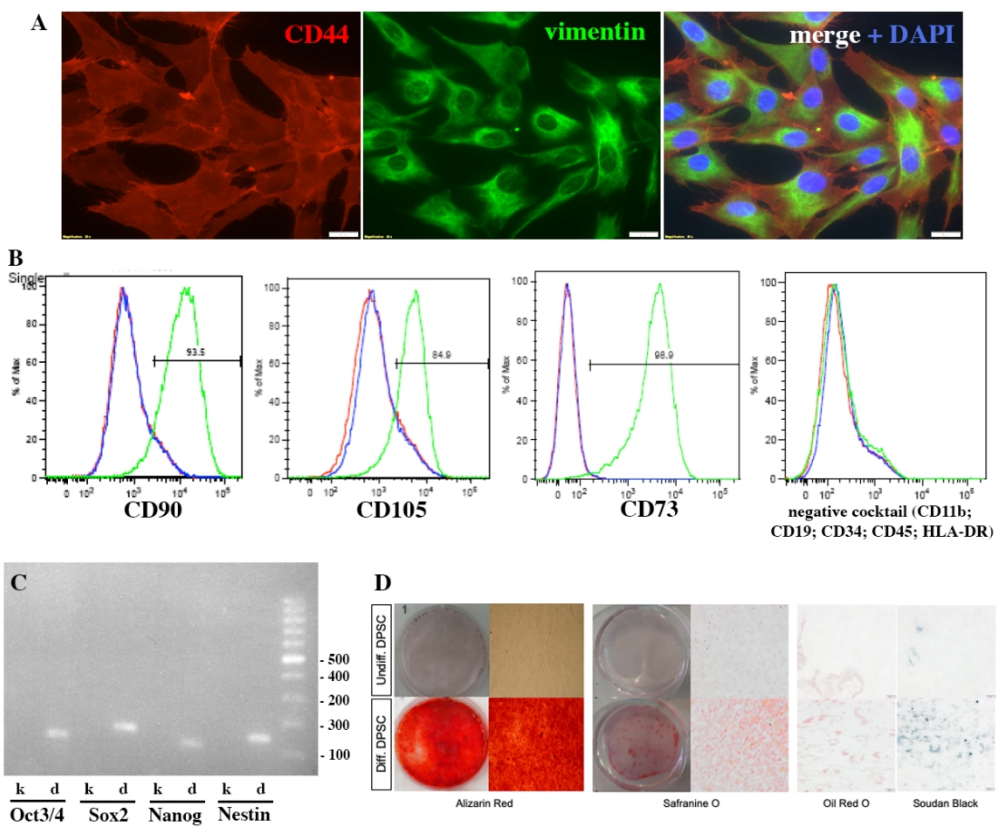
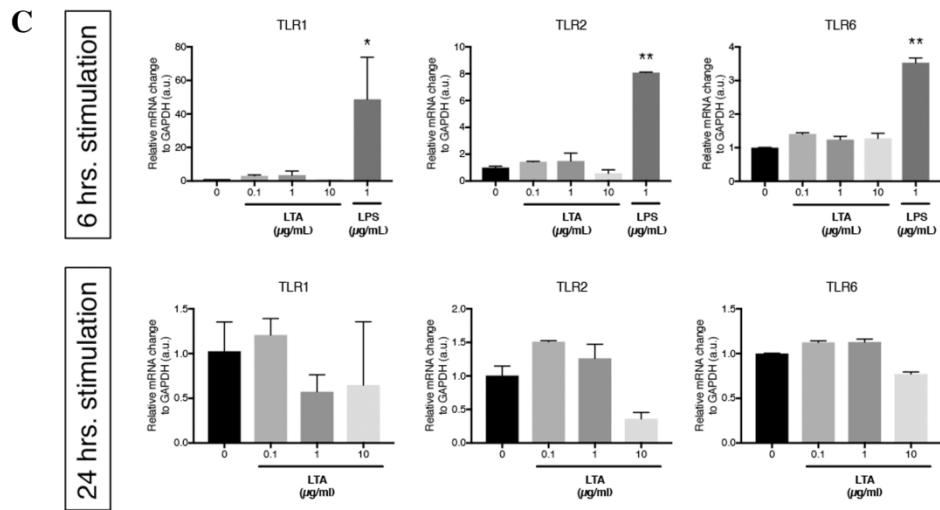
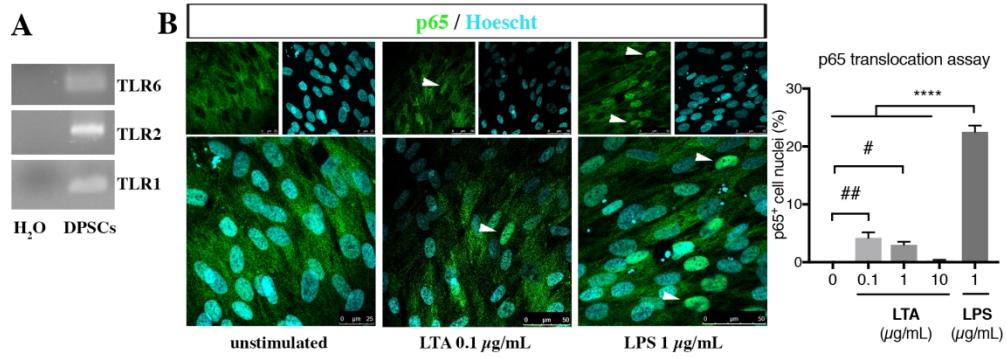
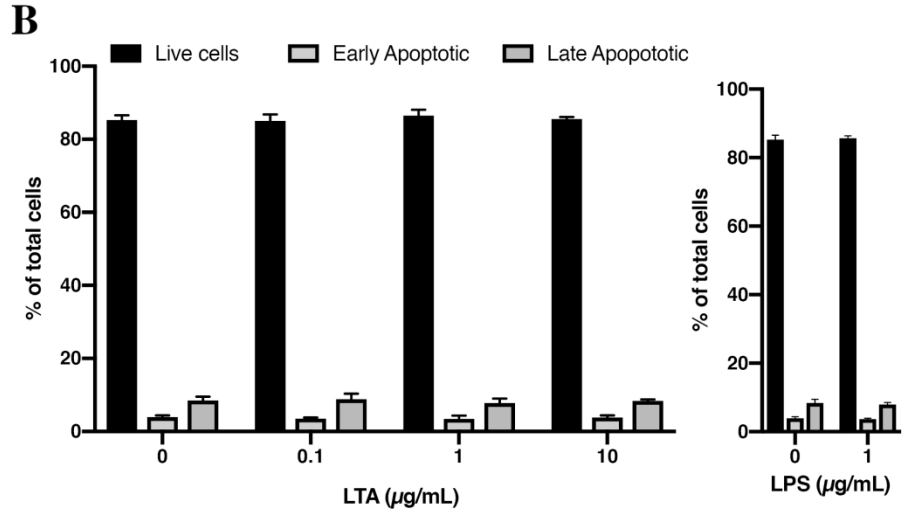
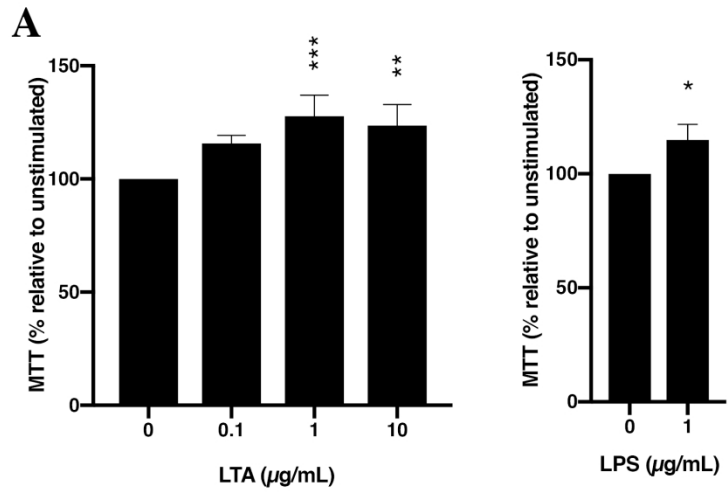
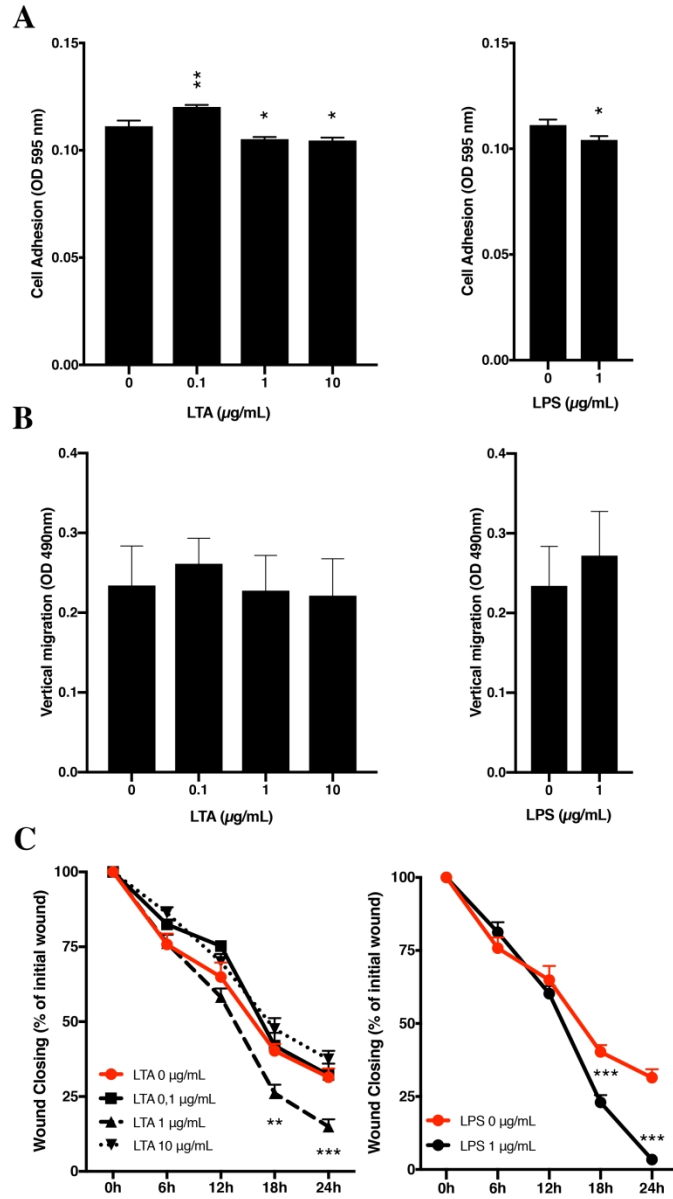


Figure 1



1
2
3
4
5
6
7
8
9
10
11
12
13
14
15
16
17
18
19
20
21
22
23
24
25
26
27
28
29
30
31
32
33
34
35
36
37
38
39
40
41
42
43
44
45
46
47
48
49
50
51
52
53
54
55
56
57
58
59
60





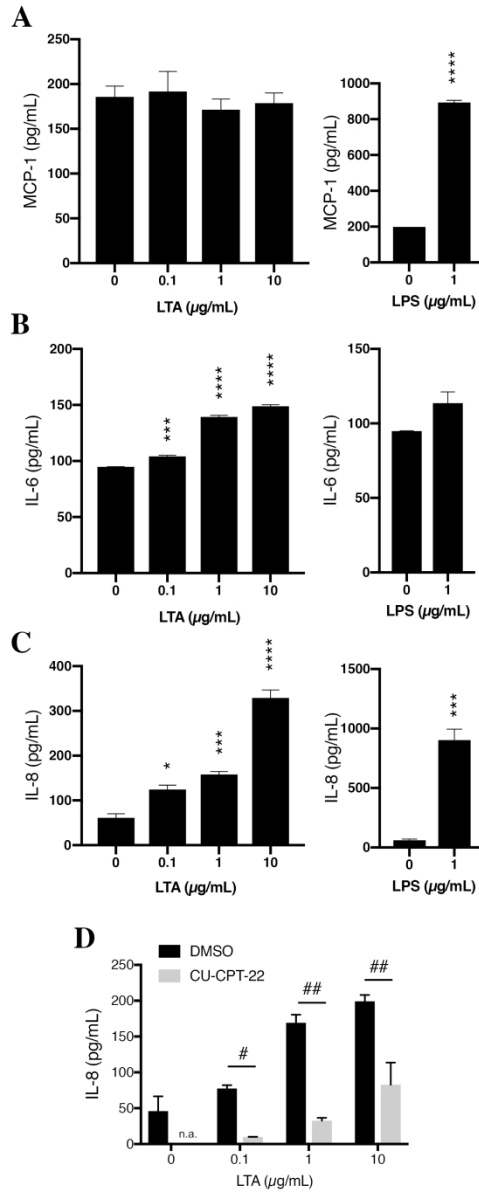
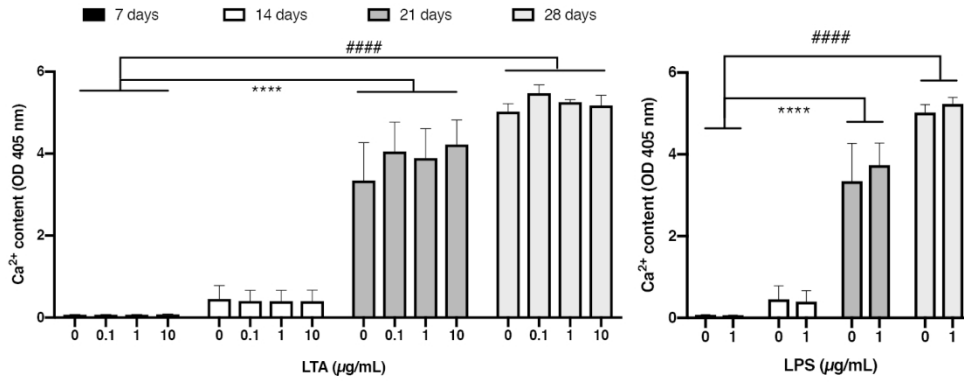
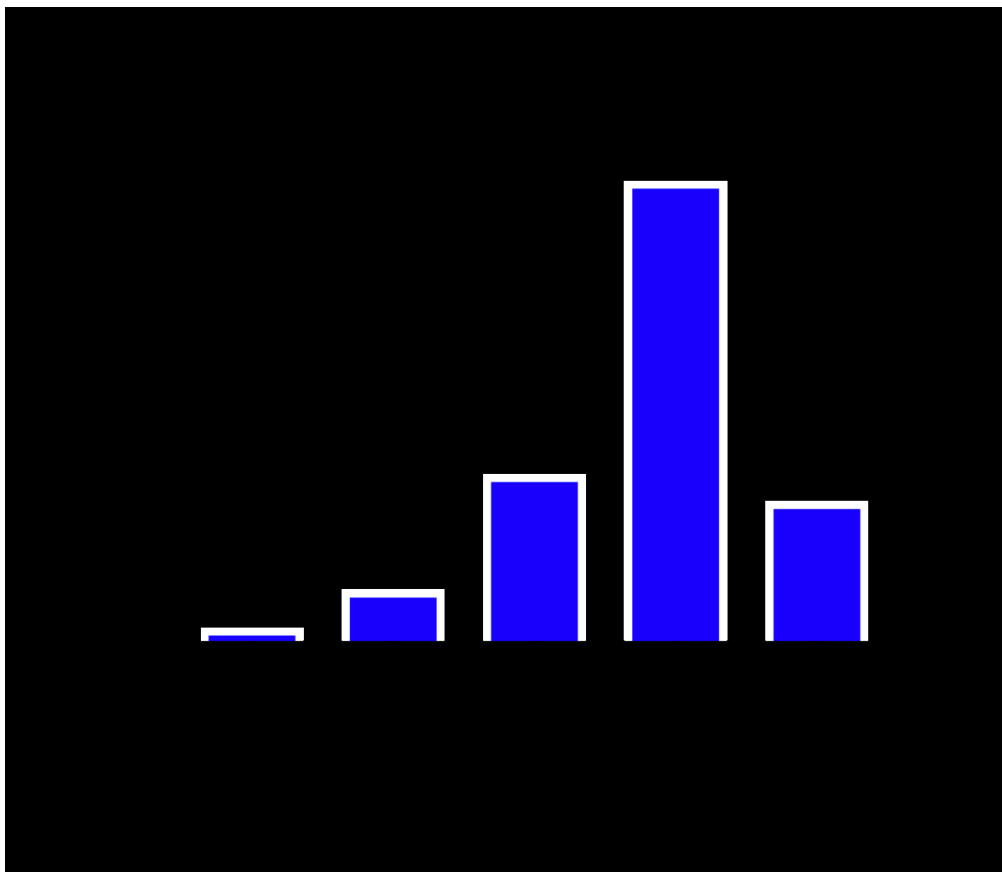


Figure 5



1
2
3
4
5
6
7
8
9
10
11
12
13
14
15
16
17
18
19
20
21
22
23
24
25
26
27
28
29
30
31
32
33
34
35
36
37
38
39
40
41
42
43
44
45
46
47
48
49
50
51
52
53
54
55
56
57
58
59
60



Supplementary Figure 1

100x87mm (300 x 300 DPI)