

## RESEARCH OUTPUTS / RÉSULTATS DE RECHERCHE

### **Chronic sulfasalazine treatment in mice induces system xc- - independent adverse effects**

Verbruggen, Lise ; Sprimont, Lindsay; Bentea, Eduard; Janssen, Pauline; Gharib, Azzedine; Deneyer, Lauren; De Pauw, Laura; Lara, Olaya; Sato, Hideyo; Nicaise, Charles; Massie, Ann

*Published in:*  
Frontiers in Pharmacology

*DOI:*  
[10.3389/fphar.2021.625699](https://doi.org/10.3389/fphar.2021.625699)

*Publication date:*  
2021

*Document Version*  
Version created as part of publication process; publisher's layout; not normally made publicly available

#### [Link to publication](#)

*Citation for published version (HARVARD):*  
Verbruggen, L, Sprimont, L, Bentea, E, Janssen, P, Gharib, A, Deneyer, L, De Pauw, L, Lara, O, Sato, H, Nicaise, C & Massie, A 2021, 'Chronic sulfasalazine treatment in mice induces system xc- - independent adverse effects', *Frontiers in Pharmacology*, vol. 12, 625699. <https://doi.org/10.3389/fphar.2021.625699>

#### **General rights**

Copyright and moral rights for the publications made accessible in the public portal are retained by the authors and/or other copyright owners and it is a condition of accessing publications that users recognise and abide by the legal requirements associated with these rights.

- Users may download and print one copy of any publication from the public portal for the purpose of private study or research.
- You may not further distribute the material or use it for any profit-making activity or commercial gain
- You may freely distribute the URL identifying the publication in the public portal ?

#### **Take down policy**

If you believe that this document breaches copyright please contact us providing details, and we will remove access to the work immediately and investigate your claim.

## Author's Proof

Before checking your proof, please see the instructions below.

- Carefully read the entire proof and mark all corrections in the appropriate place, using the Adobe Reader commenting tools ([Adobe Help](#)).
- Provide your corrections in a single PDF file or post your comments in the Production forum making sure to reference the relevant query/line number. Upload or post all your corrections directly in the Production Forum to avoid any comments being missed.
- We do not accept corrections in the form of edited manuscripts nor via email.
- Before you submit your corrections, please make sure that you have checked your proof carefully as once you approve it, you won't be able to make any further corrections.
- To ensure the timely publication of your article, please submit the corrections within 48 hours. After submitting, do not email or query asking for confirmation of receipt.

Do you need help? Visit our [Production Help Center](#) for more information. If you can't find an answer to your question, contact your Production team directly by posting in the Production Forum.

### Quick Check-List

- Author names** - Complete, accurate and consistent with your previous publications
- Affiliations** - Complete and accurate. Follow this style when applicable: Department, Institute, University, City, Country
- Tables** - Make sure our formatting style did not change the meaning/alignment of your Tables.
- Figures** - Make sure we are using the latest versions.
- Funding and Acknowledgments** - List all relevant funders and acknowledgments.
- Conflict of Interest** - Ensure any relevant conflicts are declared.
- Supplementary files** - Ensure the latest files are published and that no line numbers and tracked changes are visible.  
Also, the supplementary files should be cited in the article body text.
- Queries** - Reply to all typesetters queries below
- Content** - Read all content carefully and ensure any necessary corrections are made.

## Author Queries Form

Query No.	Details Required	Author's Response
Q1	Confirm that the short running title is correct, making sure to keep it to a maximum of five words.	
Q2	Confirm whether the insertion of the article title is correct.	
Q3	The citation and surnames of all of the authors have been highlighted. Check that they are correct and consistent with the authors' previous publications, and correct if need be. Please note that this may affect the indexing of your article in repositories such as PubMed.	
Q4	Please ask the following authors to register with Frontiers (at <a href="https://www.frontiersin.org/Registration/Register.aspx">https://www.frontiersin.org/Registration/Register.aspx</a> ) if they would like their names on the article abstract page to be linked to a Frontiers profile. Please ensure to provide us with the profile link(s) when submitting the proof corrections. Non-registered authors and authors with profiles set to private mode will have the default profile image displayed. Lindsay Sprimont Eduard Bentea Pauline Janssen Azzedine Gharib Laura De Pauw Hideyo Sato	

Query No.	Details Required	Author's Response
<b>Q5</b>	Confirm that all author affiliations are correctly listed. Note that affiliations are listed sequentially as per journal style and requests for non-sequential listing will not be applied. Note that affiliations should reflect those at the time during which the work was undertaken.	
<b>Q6</b>	Confirm that the email address in your correspondence section is accurate.	
<b>Q7</b>	Confirm that the keywords are correct and keep them to a maximum of eight and a minimum of five. (Note: a keyword can be comprised of one or more words.) Note that we have used the keywords provided at Submission. If this is not the latest version, please let us know.	
<b>Q8</b>	Check if the section headers (i.e., section leveling) were correctly captured.	
<b>Q9</b>	Ensure that all the figures, tables and captions are correct, and that all figures are of the highest quality/resolution.	
<b>Q10</b>	Confirm that the Data Availability statement is accurate. Note that we have used the statement provided at Submission. If this is not the latest version, please let us know.	
<b>Q11</b>	Confirm whether the insertion of the Ethics Statement section is fine. Note that we have used the statement provided at Submission. If this is not the latest version, please let us know.	
<b>Q12</b>	Confirm if the edit made in the "Author Contributions" section is correct.	
<b>Q13</b>	Ensure to add all grant numbers and funding information, as after publication this will no longer be possible. All funders should be credited and all grant numbers should be correctly included in this section.	
<b>Q14</b>	Confirm if the text included in the Conflict of Interest statement is correct.	
<b>Q15</b>	Ref. Nashed et al., 2017: Please provide the city name of the publisher.	
<b>Q16</b>	Ref. Rains et al., 1995: Please provide the initial(s) for the 4th author.	
<b>Q17</b>	If you decide to use previously published, copyrighted figures in your article, please keep in mind that it is your responsibility, as the author, to obtain the appropriate permissions and licenses and to follow any citation instructions requested by third-party rights holders. If obtaining the reproduction rights involves the payment of a fee, these charges are to be paid by the authors.	



# Chronic Sulfasalazine Treatment in Mice Induces System $x_c^-$ - Independent Adverse Effects

Lise Verbruggen<sup>1</sup>, Lindsay Sprimont<sup>2</sup>, Eduard Bentea<sup>1</sup>, Pauline Janssen<sup>1</sup>, Azzedine Gharib<sup>2</sup>, Lauren Deneeyer<sup>1</sup>, Laura De Pauw<sup>1</sup>, Olaya Lara<sup>1</sup>, Hideyo Sato<sup>3</sup>, Charles Nicaise<sup>2</sup> and Ann Massie<sup>1\*</sup>

<sup>1</sup>Laboratory of Neuro-Aging & Viro-Immunotherapy, Vrije Universiteit Brussel, Brussels, Belgium, <sup>2</sup>Laboratory Neurodegeneration and Regeneration, Université de Namur, Namur, Belgium, <sup>3</sup>Department of Medical Technology, Niigata University, Niigata, Japan

Despite ample evidence for the therapeutic potential of inhibition of the cystine/glutamate antiporter system  $x_c^-$  in neurological disorders and in cancer, none of the proposed inhibitors is selective. In this context, a lot of research has been performed using the EMA- and FDA-approved drug sulfasalazine (SAS). Even though this molecule is already on the market for decades as an anti-inflammatory drug, serious side effects due to its use have been reported. Whereas for the treatment of the main indications, SAS needs to be cleaved in the intestine into the anti-inflammatory compound mesalazine, it needs to reach the systemic circulation in its intact form to allow inhibition of system  $x_c^-$ . The higher plasma levels of intact SAS (or its metabolites) might induce adverse effects, independent of its action on system  $x_c^-$ . Some of these effects have however been attributed to system  $x_c^-$  inhibition, calling into question the safety of targeting system  $x_c^-$ . In this study we chronically treated system  $x_c^-$  - deficient mice and their wildtype littermates with two different doses of SAS (160 mg/kg twice daily or 320 mg/kg once daily, i.p.) and studied some of the adverse effects that were previously reported. SAS had a negative impact on the survival rate, the body weight, the thermoregulation and/or stress reaction of mice of both genotypes, and thus independent of its inhibitory action on system  $x_c^-$ . While SAS decreased the total distance travelled in the open-field test the first time the mice encountered the test, it did not influence this parameter on the long-term and it did not induce other behavioral changes such as anxiety- or depressive-like behavior. Finally, no major histological abnormalities were observed in the spinal cord. To conclude, we were unable to identify any undesirable system  $x_c^-$ -dependent effect of chronic administration of SAS.

**Keywords:** system  $x_c^-$ , sulfasalazine, adverse (side) effects, spinal cord, behavior changes, cystine, glutamate

**Abbreviations:** EPM, elevated plus maze; i.p, intraperitoneal; KW, Kruskal-Wallis; LPS, lipopolysaccharide; MAG, myelin-associated glycoprotein; MBP, myelin basic protein; MCT, multiple comparisons test; MS, multiple sclerosis; MSRT, matched-pairs signed rank test; MTS, mouse tail suspension; OF, open field; SAS, sulfasalazine; SEM, standard error of the mean; TBS, Tris-buffered saline.

## OPEN ACCESS

### Edited by:

Heike Wulff,  
University of California, United States

### Reviewed by:

James Hewett,  
Syracuse University, United States  
Thomas Broggni,  
University of California, United States

### \*Correspondence:

Ann Massie  
ann.massie@vub.be

### Specialty section:

This article was submitted to  
Neuropharmacology,  
a section of the journal  
Frontiers in Pharmacology

Received: 03 November 2020

Accepted: 26 April 2021

Published: XX 2021

### Citation:

Verbruggen L, Sprimont L, Bentea E, Janssen P, Gharib A, Deneeyer L, De Pauw L, Lara O, Sato H, Nicaise C and Massie A (2021) Chronic Sulfasalazine Treatment in Mice Induces System  $x_c^-$  - Independent Adverse Effects. *Front. Pharmacol.* 12:625699. doi: 10.3389/fphar.2021.625699

## Q8 INTRODUCTION

System  $x_c^-$  is a cystine/glutamate antiporter with xCT (Slc7a11) as specific subunit and is located mainly in the central nervous system and peripheral organs related to the immune system. xCT expression is enhanced in conditions of increased oxidative stress and/or inflammation, and inhibition of system  $x_c^-$  has been proposed as a treatment strategy for several neurological disorders as well as for diverse cancer types (Lewerenz et al., 2013; Massie et al., 2015; Koppula et al., 2018; Liu et al., 2020). However, despite many attempts, till now none of the available inhibitors are selectively targeting system  $x_c^-$ . Preclinical research is as such hampered by the lack of specific tools to interfere with the function of system  $x_c^-$  *in vivo* as it is difficult to distinguish the off-target effects of the non-specific inhibitors from the effects that are mediated by inhibition of system  $x_c^-$ . System  $x_c^-$  - deficient mice, including transgenic mice with a deletion in exon one of the xCT gene (xCT<sup>-/-</sup> mice, C57BL/6J background) (Sato et al., 2005) and mice carrying a spontaneous subtle gray mutation which extends from intron 11 through exon 12 and results in truncated Slc7a11 mRNA (Sut mice, C3H/HeSnJ background) (Chintala et al., 2005), have been valuable tools to identify the involvement of system  $x_c^-$  in disease progression in preclinical settings.

Using xCT<sup>-/-</sup> mice, we demonstrated that system  $x_c^-$  is the major source of extracellular glutamate in different brain regions (De Bundel et al., 2011; Massie et al., 2011). This glutamate can modulate the glutamatergic neurotransmission but when extracellular glutamate concentrations rise, e.g. in case of injury or neurological disorders (Mehta et al., 2013; Olloquequi et al., 2018), this glutamate can lower the threshold for glutamate toxicity (excitotoxicity) and thereby induce or further promote disease progression. Furthermore, system  $x_c^-$  has been reported to drive neuroinflammation. Genetic xCT deletion shifts microglial cells towards a more anti-inflammatory, neuroprotective profile in a model for amyotrophic lateral sclerosis (Mesci et al., 2015) and attenuates the (neuro)inflammatory response after a systemic injection of a sublethal dose of lipopolysaccharide (LPS) (Albertini et al., 2018). Accordingly, xCT<sup>-/-</sup> mice have been shown to be protected in models for several neurological disorders.

In the context of cancer, it is widely accepted that inhibition of system  $x_c^-$  reduces cancer cell proliferation (Gout et al., 2001; Guo et al., 2011; Lewerenz et al., 2013; Dai et al., 2014), tissue invasion and metastasis (Sontheimer and Bridges, 2012; Lewerenz et al., 2013) as well as multidrug resistance (Lo et al., 2008; Sontheimer and Bridges, 2012; Lewerenz et al., 2013; Bhutia et al., 2015). While all these features result from the inhibition of cystine uptake and consequently reduced glutathione synthesis in the cancer cells, also decreased glutamate release can be beneficial in some cancer types. In glioblastoma, glutamate released from the tumor by system  $x_c^-$  is involved in peritumoral seizure development and favors cancer invasion by inducing peritumoral excitotoxic neuronal cell death (Sontheimer and Bridges, 2012). Moreover, in bone cancer, inhibition of system  $x_c^-$  has been shown to reduce cancer-induced bone-pain due to decreased glutamate release (Ungard et al., 2014).

To allow translation of these findings to a clinical setting, pharmacological inhibition of the transporter is required.

However, all candidate inhibitors that have been proposed, have their drawbacks and off-target effects. Cyclic and non-cyclic glutamate analogues, such as L- $\alpha$ -aminopimelate and (S)-4-carboxyphenylglycine, show cross-activity with glutamatergic receptors due to the structure similarity with glutamate (Lewerenz et al., 2013), and inhibitors such as sorafenib and erastin show neuronal toxicity (Dahlmans et al., 2017). Moreover, toxic effects related to inhibition of tyrosine kinase by sorafenib (Granito et al., 2016) and nephrotoxicity due to cytotoxic effects of erastin on healthy renal cells (Fujiki et al., 2019; Yu et al., 2019) were demonstrated. Capsazepine blocks voltage-activated calcium channels (Docherty et al., 1997), vanilloid receptor and nicotinic acetylcholine receptors (Liu and Simon, 1997) and sulfasalazine (SAS) inhibits NFkB (Weber et al., 2000) and acts as an antagonist of the N-methyl-D-aspartate (NMDA) receptor (Ryu et al., 2003; Noh et al., 2006).

Despite its off-target effects (Weber et al., 2000; Ryu et al., 2003; Noh et al., 2006), SAS is the most frequently used molecule to test the potential of system  $x_c^-$  as a drug target in both preclinical (Evonuk et al., 1950; Gout et al., 2001; Ma et al., 2015; Leclercq et al., 2019; Hu et al., 2020) and clinical studies (Shitara et al., 2017; Takeuchi et al., 2014). It is FDA- and EMA-approved and already on the market as an anti-inflammatory drug for decades, allowing a fast transfer to a clinical setting. While SAS-induced inhibition of system  $x_c^-$  was effective in rodent models of different cancer types (Gout et al., 2001; Chung et al., 2005; Doxsee et al., 2007; Guo et al., 2011; Ma et al., 2015; Wada et al., 2018; Hu et al., 2020) as well as in models for epilepsy (Leclercq et al., 2019) and multiple sclerosis (MS) (Evonuk et al., 1950), Soria *et al.* recently reported *in vivo* myelin degeneration in the white matter of the spinal cord and *in vitro* oligodendrocyte-toxicity after SAS-induced chronic inhibition of system  $x_c^-$  (Soria et al., 2016). On the contrary, blocking system  $x_c^-$  during inflammation was suggested to prevent oligodendrocyte damage in white matter disorders (Domercq et al., 1950). Indeed, the use of SAS in the context of MS is debatable: some pre-clinical studies demonstrated beneficial effects of SAS treatment -including reduced demyelination (Evonuk et al., 1950; Prosiogel et al., 1990)- while others showed worsening of the clinical symptoms when the treatment was continued for a longer time (Correale et al., 1991; Noseworthy et al., 1998). Also in the context of glioblastoma, contradictory data have been published concerning the safety of SAS. Positive effects of SAS were seen in rodent models, without any signs of toxicity (Gout et al., 2001; Chung et al., 2005), yet two clinical trials with glioblastoma patients revealed severe side effects of SAS including neurological features as well as bone-marrow and hematological toxicity (mostly leukopenia and neutropenia) (Robe et al., 2009; Takeuchi et al., 2014).

For both ulcerative colitis and Crohn's disease -the main indications of SAS- the pharmacological activity is driven by the anti-inflammatory metabolite mesalazine, which is formed after cleavage in the intestine. In animal models for these disorders, rather small doses of SAS (10–100 mg/kg) are administered orally (Radi et al., 2011; Shin et al., 2017; Soliman et al., 2019). However, to achieve inhibition of system

$x_c^-$  SAS needs to reach the plasma and the target organ in its intact form. As such, higher doses (150–320 mg/kg twice a day) and other routes of administration (mostly intraperitoneal (i.p.) injections) have been used (Evonuk et al., 1950; Gout et al., 2001; Chung et al., 2005; Lo et al., 2010). While orally taken SAS is overall well-tolerated in patients with ulcerative colitis and Crohn's disease (Rains et al., 1995), it is possible that the increased systemic concentrations of intact SAS, result in toxic effects of SAS itself or its metabolite sulphapyridine (Zheng et al., 1993).

In this study, we aimed to identify the (adverse) effects of SAS that are mediated by inhibition of system  $x_c^-$ . To do so, we chronically i. p. administered two doses of SAS that are commonly used to achieve inhibition of system  $x_c^-$  in preclinical studies -i.e. 160 mg/kg twice a day or 320 mg/kg once a day (Evonuk et al., 1950; Gout et al., 2001; Chung et al., 2005; Soria et al., 2016)- to  $xCT^{-/-}$  mice and their wildtype littermates ( $xCT^{+/+}$  mice), and studied the welfare of the mice as well as different behavioral outcomes. Given inconsistent reports on the use of SAS in disorders characterized by deficits in the spinal cord such as MS, we further focused on the involvement of system  $x_c^-$  in possible toxic effects of chronic SAS treatment on the spinal cord.

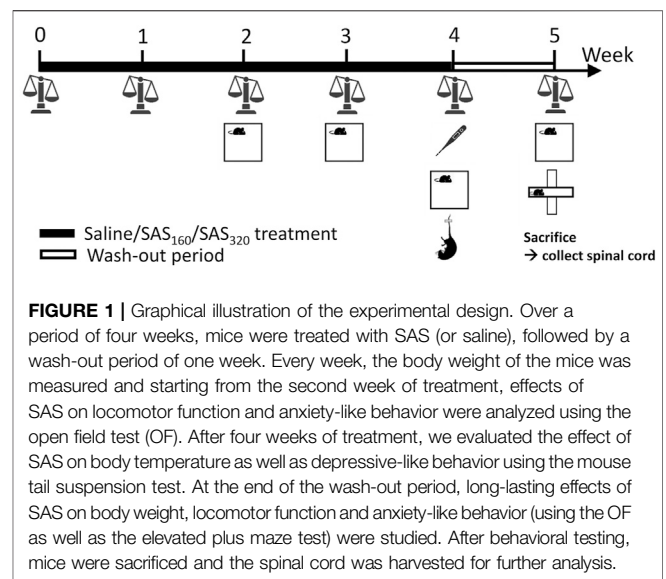
## MATERIAL AND METHODS

### Animals

Six-month-old male  $xCT^{-/-}$  and  $xCT^{+/+}$  littermates were used. These mice are high-generation descendants (more than 15 backcrosses on a C57BL/6J background) of the strain originally described by Sato et al. (2005), and are bred in a heterozygous colony and. Mice were genotyped by a PCR amplification on DNA extracted from ear punches, using the REDExtract-N-Amp Tissue PCR kit (Sigma-Aldrich) and the following primers: 5'-GATGCCCTTCAGCTCGATGCGGTTCCACCAG-3' (GFPR3); 5'-CAGAGCAGCCCTAAGGCACTTTCC-3' (mxCT5' flankF6); 5'-CCGATGACGCTGCCGATGA TGATGG-3' (mxCT [Dr.4] R8). Mice were group-housed under standardized conditions (20–24°C, 10/14 h dark/light cycle, 45–65% humidity) with free access to water and food. Animal experiments were approved by the Ethical Committee for Animal Experiments of the Vrije Universiteit Brussel and carried out according to the national guidelines on animal experimentation. All efforts were made to minimize animal suffering.

### Experimental design

A fresh 40 mM SAS (2-hydroxy-5-[[4-(pyridin-2-ylsulfamoyl)phenyl]diazonyl]benzoic acid; Sigma-Aldrich) solution was prepared daily by dissolving the powder in a small volume of NaOH 0.1 M. pH was adjusted to 7.4 and saline (0.9% NaCl, B. Braun Vet Care) added to reach the desired concentration of SAS. Mice were randomly assigned to the different treatment groups (160 mg/kg of SAS twice a day, 320 mg/kg of SAS once a day or saline twice a day). Over a period of four weeks, mice were i. p. injected with SAS (or saline) at 10:00 a.m. (all mice) and 5:00 p.m. (mice treated with 160 mg/kg of SAS and saline). As indicated in **Figure 1**, the body weight of each animal was measured every week to adjust the dose of SAS. Starting from the second week of



treatment, effects of SAS on locomotor function and anxiety-like behavior were analyzed using the open field (OF) test, 2 h after the first injection of the day (12:00 a.m.). After 4 weeks of treatment, we evaluated the effect of SAS on body temperature (immediately after the first injection of the day), as well as depressive-like behavior using the mouse tail suspension test (MTS, 1 h after the OF). Next, we included a wash-out period of one week during which the mice did not receive SAS or saline injections and studied the long-lasting effects of SAS on body weight, locomotor function and anxiety-like behavior (using the OF as well as the elevated plus maze (EPM) test). After behavioral testing, mice were sacrificed by cervical dislocation and spinal cord was harvested and post-fixed in 4% paraformaldehyde for 72 h. Of note, for each behavioral test, mice were acclimatized to the testing room at least 1 h prior to assessment and all analyses were performed by a researcher blinded for treatment and genotype.

### Open-Field Test

In the OF, mice were placed in a corner of a square box (60 × 60 × 60 cm) with surrounding black opaque walls that prevent observation of visual cues outside the arena (Bentea et al., 2015). The center of the arena was defined as the central 40 × 40 cm zone. The illuminance in the arena was 150 lux in the center and 30 lux in the corners. Mice were allowed to explore the arena for 5 min and the experiment was video-recorded. The total distance travelled (parameter for spontaneous locomotion and explorative behavior) as well as the cumulative duration spent in the center zone (parameter for anxiety-like behavior) were analyzed using an automated video tracking system (Ethovision software, Noldus).

### Mouse Tail Suspension Test

For the MTS, mice were suspended by the tip of their tail for 5 min to induce an inescapable situation (Bentea et al., 2015). The mice were video-recorded and the time of immobility, which is considered as a parameter for depressive-like behavior (Steru et al., 1985), was measured manually. Mice that climbed their tail

**TABLE 1** | Primary antibodies used for immunostaining.

Primary antibodies [species]	Dilution	Supplier	References	Blocking solution
Anti-Iba1 [PR]	1:1000	Wako chemicals	019-9741	NGS
Anti-p25 $\alpha$ [PR]	1:1000	Sigma-Aldrich	PA036576	NGS
Anti-GFAP [MM]	1:10 000	Sigma-Aldrich	GA5 clone, G3893	NHS
Anti-MAG [MM]	1:5000	Abcam	ab89780	NHS
Anti-MBP [PR]	1:500	Abcam	ab40390	NGS
Anti- NeuN [PR]	1:1000	Cell Signaling	D3S3I	NGS

PR: polyclonal rabbit; MM: mouse monoclonal; NGS: normal goat serum; NHS: normal horse serum.

were excluded from the analysis as they learned that escape is possible, thereby invalidating immobility time as measure for depressive-like behavior (Cryan and Mombereau, 2004).

## Elevated Plus Maze Test

In the EPM, mice were placed in the corner of a closed arm of an elevated (37 cm from the ground) cross-shaped maze consisting of two open and two enclosed arms (32.5 cm length  $\times$  6 cm width  $\times$  17 cm height), with a center area of 6  $\times$  6 cm (Rodgers et al., 1995). The illuminance in the center was 150 lux. Mice were allowed to explore the maze for 5 min and the experiment was video-recorded. The time spent in the open arms (parameter for anxiety-like behavior), the total distance travelled and velocity (parameters to evaluate locomotor functions) were analyzed using an automated video tracking system (Ethovision software).

## Body Temperature

The body temperature of the mice was recorded before as well as 10, 60 and 120 min after i. p. injection with SAS or saline, using a rectal probe (RET-3, ADInstruments) connected to a thermometer (Testo 935, Testo). Mice were restrained, but not anesthetized, to perform the procedure.

## Histology

The post-fixed spinal cords were embedded in paraffin, sliced into 10  $\mu$ m sections using a microtome, mounted on glass slides and dried overnight at 42°C. Slides containing sections of the cervical region of the spinal cord were soaked in Eriochrome Cyanine (Sigma-Aldrich) for 30 min and after rinsing with deionized water, slides were processed in a bath of differentiator (ammonium hydroxide). Counterstaining was performed with Neutral Red (Thermo Scientific). Stained sections were examined using a Leica 2450 microscope (Leica Microsystems GmbH).

## Immunohistochemistry

Neurons, astrocytes, oligodendrocytes, microglia and myelin were labeled in paraffin sections of the cervical region of the spinal cord, using respectively anti-NeuN, anti-GFAP, anti-p25 $\alpha$ , anti-Iba1, anti-myelin basic protein (MBP) and anti-myelin-associated glycoprotein (MAG) antibodies (see Table 1). Paraffin sections were dewaxed, rehydrated and epitope retrieval was performed with citrate buffer (pH 6) at 100°C for 10 min. Endogenous peroxidase activity was eliminated by incubation with 3% H<sub>2</sub>O<sub>2</sub> for 10 min. Sections were placed in a bath of 0.1 M glycine for 3 min, followed by a 30 min blocking step in 5% goat or horse serum diluted in Tris-buffered saline

(TBS; see Table 1) to avoid non-specific binding of antibodies. Sections were incubated with primary antibodies diluted 1% normal goat or horse serum (in TBS) overnight at 4°C (see Table 1). The next day, after rinsing, sections were incubated for 1 h in biotinylated secondary antibodies (1:300; ABC Kit, Vectastain) at room temperature, followed by peroxidase-bound streptavidin (1:200, ABC Kit) for 45 min. Immunoreactivity was revealed using 3,3 di-amino-benzidine (Dako), counterstained using hemalum before dehydration and observed under an Olympus BX63 microscope (Olympus lifescience). The number of NeuN<sup>+</sup> and p25 $\alpha$ <sup>+</sup> cells was assessed quantitatively in the grey matter, using the Cell Sens software. The same software was used to quantify the MAG immunoreactivity in the white matter. MBP immunoreactivity was manually scored for the presence of myelin abnormalities: normal (0), vacuolization or myelin disorganization (Koppula et al., 2018) or myelin loss (Massie et al., 2015). Astrogliosis was evaluated in the gray matter by manually scoring sections stained for GFAP as follows: normal (0), presence of slight (Koppula et al., 2018), mild (Massie et al., 2015) or severe astrogliosis (Liu et al., 2020). Finally, Iba-1 positive microglia in the gray matter were classified into different activation states (type A-D) based on morphology, as described before (Bouchat et al., 2017).

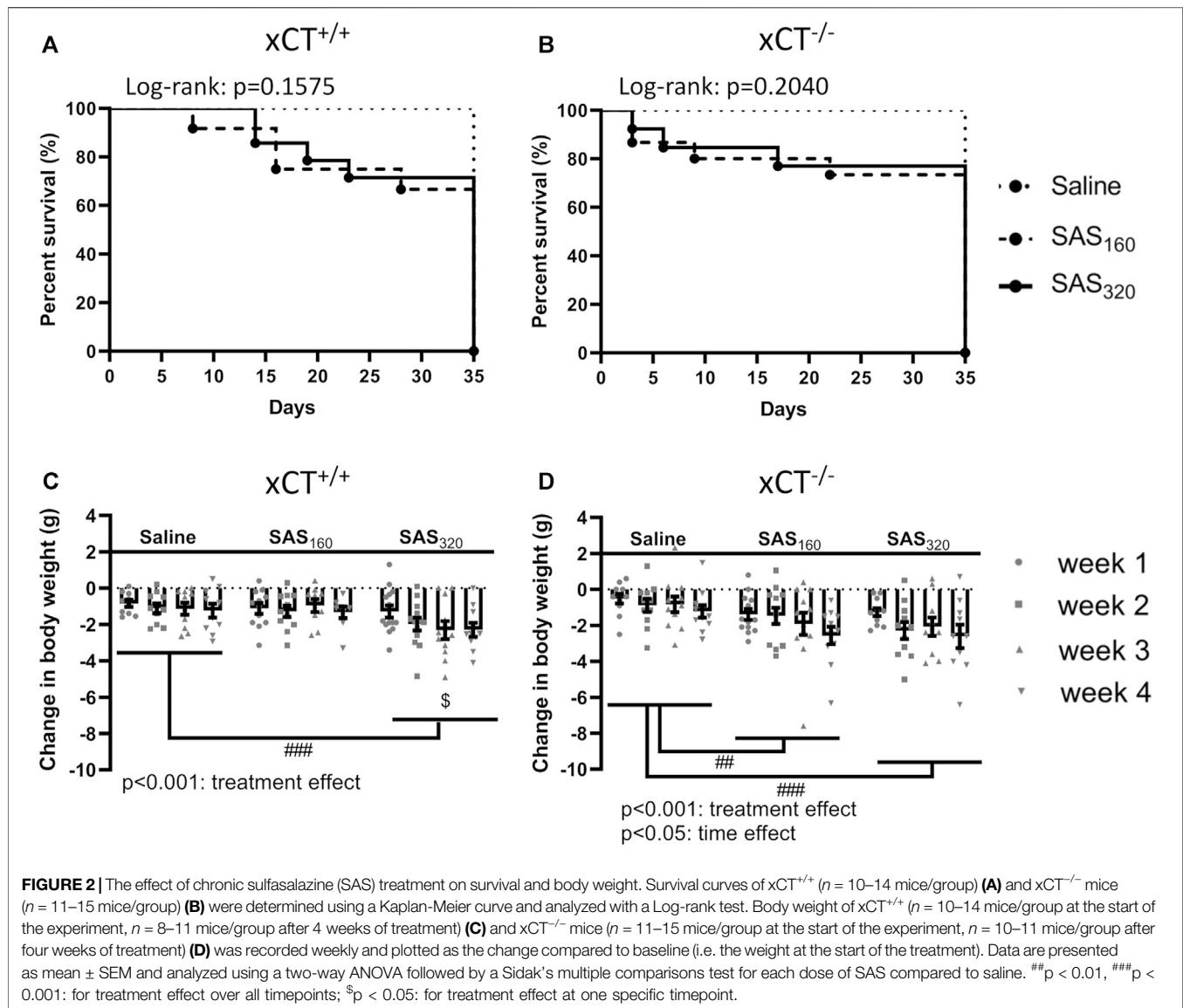
## Statistics

Data are presented as mean  $\pm$  standard error of the mean (SEM). For all analyses, we evaluated the effect of SAS treatment in each genotype separately. For data including a time effect, a two-way ANOVA followed by a Sidak's multiple comparisons test (MCT) comparing each dose of SAS to the saline group or a Wilcoxon matched-pairs signed rank test (Wilcoxon MSRT) was used. For data on one timepoint, a Kruskal-Wallis (KW) test was performed followed by a Dunn's MCT comparing each dose of SAS to the saline group. Categorical data was analyzed using a Fisher's exact test and survival curves were analyzed using a Log-rank test. All analyses were performed in GraphPad Prism eight and the  $\alpha$ -value was set at 0.05.

## RESULTS

### Chronic Sulfasalazine Treatment Induces Mortality and Weight Loss in a xCT-independent Manner

We started the experiment with  $n = 10$  xCT<sup>+/+</sup> mice and  $n = 11$  xCT<sup>-/-</sup> mice in the saline group,  $n = 12$  xCT<sup>+/+</sup> mice and  $n = 15$



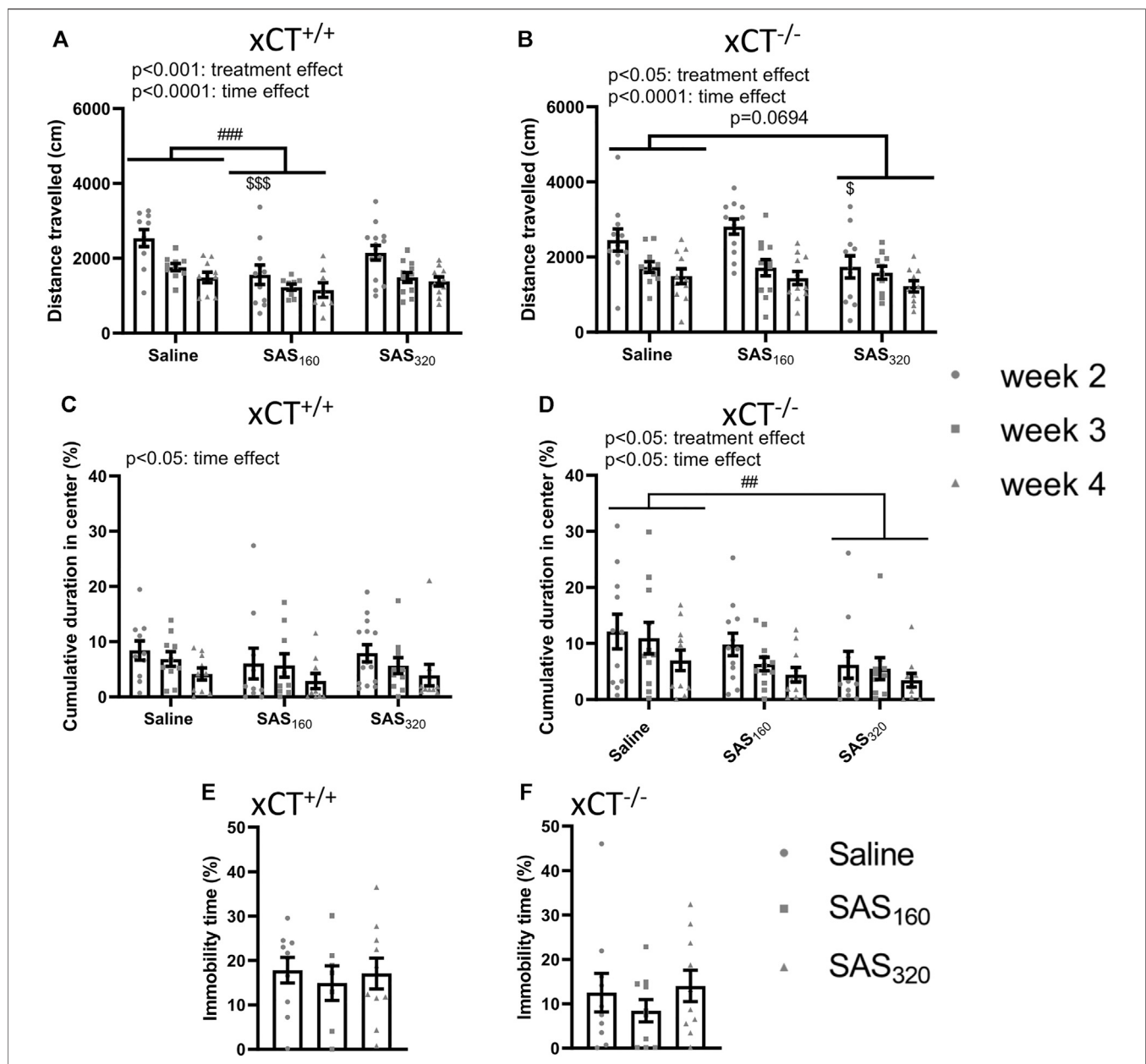
$xCT^{-/-}$  mice in the SAS 160 mg/kg group, and  $n = 14$   $xCT^{+/+}$  mice and  $n = 13$   $xCT^{-/-}$  mice in the SAS 320 mg/kg group. Over the 4 weeks of SAS treatment, four mice of each genotype treated with 160 mg/kg of SAS as well as four  $xCT^{+/+}$  and three  $xCT^{-/-}$  mice treated with 320 mg/kg of SAS died unexpectedly without any clear preceding sickness behavior. None of the mice injected with saline died during the experiment (Figures 2A,B).

While all mice lost weight starting from the 1st week of treatment, this was more pronounced in SAS-treated mice (Figures 2C,D; two-way ANOVA, treatment effect:  $xCT^{+/+}$  mice  $F_{(2,116)} = 8.197$ ,  $p = 0.0005$ ;  $xCT^{-/-}$  mice  $F_{(2,122)} = 8.176$ ,  $p = 0.0005$ ). Injections with both saline and 160 mg/kg of SAS induced the same degree of weight loss in  $xCT^{+/+}$  mice, which was stable over the four weeks of treatment (Figure 2C; Sidak's MCT:  $p = 0.9251$ ), whereas the weight loss was more pronounced in  $xCT^{+/+}$  mice treated with 320 mg/kg of SAS compared to saline-injected mice

(Figure 2C; Sidak's MCT:  $p = 0.0008$ ). In contrast, all  $xCT^{-/-}$  mice treated with SAS lost more weight compared to saline-treated mice of the same genotype (Figure 2D; Sidak's MCT, saline vs. SAS<sub>160</sub>:  $p = 0.0039$ , saline vs. SAS<sub>320</sub>:  $p = 0.0005$ ). Moreover, weight loss increased over time in all groups of  $xCT^{-/-}$  mice, with the most pronounced weight loss after 4 weeks of daily injections (Figure 2D; two-way ANOVA, time effect:  $F_{(3,122)} = 2.982$ ,  $p = 0.0340$ ; Sidak's MCT, w1 vs. w4:  $p = 0.0203$ ).

### Chronic sulfasalazine treatment decreases the total distance travelled in the open field arena but does not induce anxiety- or depressive-like behavior

Starting from week two of treatment, locomotor function of the mice was analyzed using the OF (Figures 3A,B). All  $xCT^{+/+}$  mice



**FIGURE 3** | The effect of chronic sulfasalazine (SAS) treatment on locomotor function as well as anxiety- and depressive-like behavior. The total distance travelled in the open field (OF) test was used to measure locomotor function of xCT<sup>+/+</sup> ( $n = 10-14$  mice/group at the start of the experiment,  $n = 8-11$  mice/group after four weeks of treatment) (A) and xCT<sup>-/-</sup> mice ( $n = 11-12$  mice/group at the start of the experiment,  $n = 10-11$  mice/group after four weeks of treatment) (B), starting from the second week of treatment. The cumulative duration spent in the center of the OF arena was plotted to study anxiety-like behavior (C,D). The immobility-time in the mouse tail suspension test (MTS) performed after 4 weeks of treatment was assessed as a parameter for depressive-like behavior ( $n = 7-10$  xCT<sup>+/+</sup> mice/group (E);  $n = 10$  xCT<sup>-/-</sup> mice/group (F)). Data are presented as mean  $\pm$  SEM and analyzed using a two-way ANOVA followed by Sidak's multiple comparisons for each dose of SAS compared to saline for the OF: ## $p < 0.01$ , ### $p < 0.001$ : for treatment effect over all timepoints; \$ $p < 0.05$ , \$\$\$ $p < 0.001$ : for treatment effect at one specific timepoint. MTS data were analyzed using a Kruskal-Wallis test.

covered a longer distance in the OF arena the first time they were introduced to this test, compared to all other timepoints (Figure 3A; two-way ANOVA, time effect:  $F_{(2,842)} = 14.85$ ,  $p < 0.0001$ ; Sidak's MCT, w2 vs. w3:  $p = 0.0003$ , w2 vs. w4:  $p < 0.0001$ ). The same time-effects were seen in xCT<sup>-/-</sup> mice (Figure 3B; two-way ANOVA:  $F_{(2,902)} = 15.60$ ,  $p < 0.0001$ ;

Sidak's MCT, w2 vs. w3:  $p = 0.0008$ , w2 vs. w4:  $p < 0.0001$ ). In addition, SAS-treated xCT<sup>+/+</sup> mice traveled less over the entire period of testing compared to saline-injected mice of the same genotype (Figure 3A; two-way ANOVA, treatment effect:  $F_{(2,84)} = 8.397$ ,  $p = 0.0005$ ). This effect was driven by the mice treated with 160 mg/kg of SAS (Sidak's MCT, saline vs. SAS<sub>160</sub> over the

entire period of testing:  $p = 0.0002$ ) and it is most pronounced in the first test trial (Sidak's MCT, saline vs. SAS<sub>160</sub> at w2:  $p = 0.0003$ ). Also in  $xCT^{-/-}$  mice, SAS treatment significantly affected the distance walked in the OF arena (**Figure 3B**; two-way ANOVA, treatment effect:  $F_{(2,90)} = 4.043$ ,  $p = 0.0208$ ). In contrast to the  $xCT^{+/+}$  mice, this parameter was not significantly altered between  $xCT^{-/-}$  mice treated with saline or 160 mg/kg of SAS, whereas there was a trend toward a decrease in  $xCT^{-/-}$  mice treated with 320 mg/kg of SAS compared to the saline-treated ones (**Figure 3B**; Sidak's MCT, saline vs. SAS<sub>320</sub> over the entire period of testing:  $p = 0.0694$ ). In line with the treatment effect of 160 mg/kg of SAS in  $xCT^{+/+}$  mice, this effect is mostly seen at week two of the treatment (Sidak's MCT, saline vs. SAS<sub>320</sub> at w2:  $p = 0.0398$ ).

The cumulative duration in the center of the OF arena was in agreement with the data on the total distance travelled—the highest after two weeks of treatment (the first time they explore the OF arena) in all tested groups (**Figures 3C,D**). The time in the center gradually decreased over the treatment period in all groups of  $xCT^{+/+}$  and  $xCT^{-/-}$  mice, resulting in a significant difference between the performance on week two compared to week 4 (**Figure 3C**; two-way ANOVA,  $xCT^{+/+}$  mice: time effect  $F_{(2,84)} = 3.489$ ,  $p = 0.0350$ ; Sidak's MCT, w2 vs. w4:  $p = 0.0307$ ;  $xCT^{-/-}$  mice: time effect  $F_{(2,90)} = 3.401$ ,  $p = 0.0377$ ; Sidak's MCT, w2 vs. w4:  $p = 0.0326$ ). While we were unable to show a treatment effect in  $xCT^{+/+}$  mice (**Figure 3C**; two-way ANOVA:  $F_{(2,84)} = 0.5784$ ,  $p = 0.5630$ ), SAS treatment significantly decreased the time spent in the center of the OF arena in  $xCT^{-/-}$  mice (**Figure 3D**; two-way ANOVA, treatment effect  $F_{(2,90)} = 4.283$ ,  $p = 0.0167$ ). The latter effect is driven by the mice treated with 320 mg/kg of SAS (Sidak's MCT, saline vs. SAS<sub>320</sub> over the entire period of testing:  $p = 0.0099$ ). Finally, there were no effects of 4 weeks of SAS treatment on the immobility time in the MTS test—which was used to measure depressive-like behavior—independent of the dose of SAS in both  $xCT^{+/+}$  (**Figure 3E**; KW test:  $p = 0.8149$ ) and  $xCT^{-/-}$  mice (**Figure 3F**; KW test:  $p = 0.5502$ ).

## Chronic Sulfasalazine Treatment Influences Body Temperature via $xCT$ -Independent Mechanisms

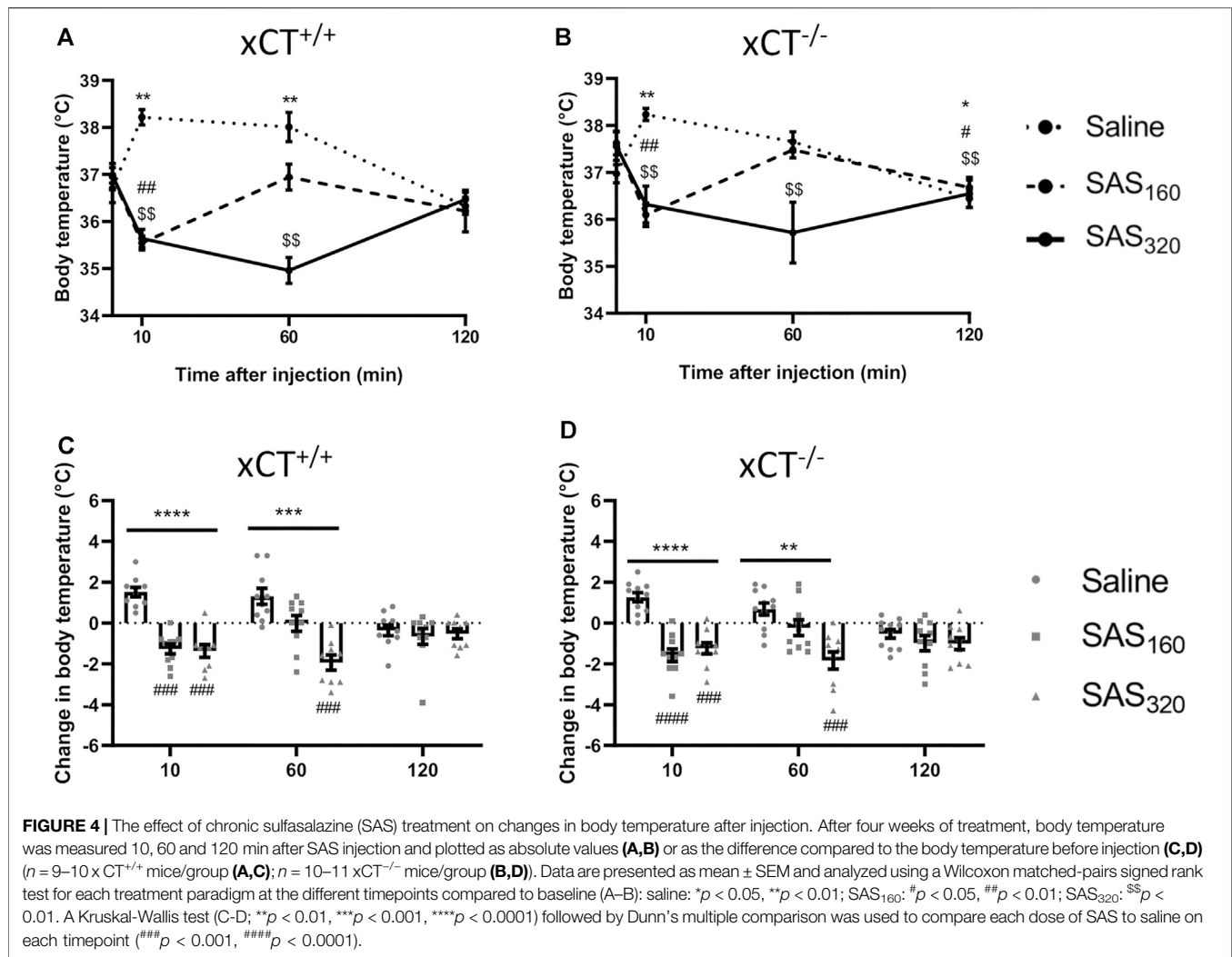
Immediately after SAS injection some of the mice did not show their normal behavior but were lying on their abdomen and seemed to be panting. As this behavior has been described to be related to thermoregulation (McDonough et al., 2020), we evaluated the effect of SAS injection on the body temperature of the mice. As presented in **Figure 4A**, saline-treated  $xCT^{+/+}$  mice showed a normal stress-induced hyperthermic reaction after an i. p. injection (Olivier et al., 2003), with an initial 2°C increase of their body temperature, which normalizes after 120 min (Wilcoxon MSRT compared to baseline, 10 min:  $p = 0.0020$ , 60 min:  $p = 0.0059$ , 120 min:  $p = 0.2598$ ). However, 10 min after injection, the body temperature of all SAS-treated  $xCT^{+/+}$  mice was decreased compared to baseline (**Figure 4A**; Wilcoxon MSRT

compared to baseline, SAS<sub>160</sub>:  $p = 0.0039$ , SAS<sub>320</sub>:  $p = 0.0039$ ). As such, the change in body temperature as a result of the i. p. injection was significantly different between both groups of SAS-treated  $xCT^{+/+}$  mice compared to saline-injected mice of the same genotype (**Figure 4C**; KW test:  $p < 0.0001$ ; Dunn's MTC, saline vs. SAS<sub>160</sub>:  $p = 0.0010$ , saline vs. SAS<sub>320</sub>:  $p = 0.0001$ ). The change in body temperature of  $xCT^{+/+}$  mice treated with 320 mg/kg of SAS was still significantly different from saline-treated  $xCT^{+/+}$  mice 60 min after injection (**Figure 4C**; KW test:  $p = 0.0003$ ; Dunn's MCT:  $p = 0.0001$ ), contrary to the 160 mg/kg group (Dunn's MCT:  $p = 0.2417$ ). The same response was seen in  $xCT^{-/-}$  mice, with an increased body temperature in saline-treated  $xCT^{-/-}$  mice 10 min after injection (**Figure 4B**; Wilcoxon MSRT compared to baseline; saline:  $p = 0.0020$ ), while both doses of SAS induced hypothermia (**Figure 4B**; Wilcoxon MSRT compared to baseline, SAS<sub>160</sub>:  $p = 0.0020$ , SAS<sub>320</sub>  $p = 0.0039$ ), resulting in a significant difference in the injection-induced change in body temperature between SAS- and saline-treated mice (**Figure 4D**; KW test:  $p < 0.0001$ ; Dunn's MTC, saline vs. SAS<sub>160</sub>:  $p < 0.0001$ , saline vs. SAS<sub>320</sub>:  $p = 0.0010$ ). For the  $xCT^{-/-}$  mice treated with 320 mg/kg of SAS, this effect was still present 60 min after injection (**Figure 4D**; KW test  $p = 0.0011$ ; Dunn's MTC:  $p = 0.0004$ ), in contrast to the ones treated with 160 mg/kg of SAS (Dunn's MTC:  $p = 0.2065$ ). Taken together, all SAS-induced effects on body temperature were seen in both genotypes and only temporary as at 120 min after injection no difference in the change in body temperature was seen between SAS- and saline-injected mice, independent of genotype (**Figures 4C,D**; KW test,  $xCT^{+/+}$  mice:  $p = 0.7696$ ,  $xCT^{-/-}$  mice:  $p = 0.4688$ ).

## Chronic Sulfasalazine Treatment Does Not Induce Long Term-Effects on Behavior

After a wash-out period of one week, we still detected an effect of SAS treatment on the body weight of  $xCT^{+/+}$  mice (**Figure 5A**; KW test:  $p = 0.0160$ ). This effect was driven by the group receiving 320 mg/kg SAS. The change in bodyweight compared to baseline was significantly different in the  $xCT^{+/+}$  mice treated with 320 mg/kg of SAS compared to saline-treated  $xCT^{+/+}$  mice at this timepoint (Dunn's MTC:  $p = 0.0097$ ), while the effect of 160 mg/kg of SAS on body weight was faded out (Dunn's MTC:  $p = 0.8347$ ). Similarly, after the wash-out period the body weight of  $xCT^{-/-}$  mice treated with SAS is lower compared to the ones treated with saline, but this effect was not statistically significant (**Figure 5B**; KW test:  $p = 0.0907$ ).

No long-term behavioral effects of SAS treatment were detected (**Figure 5C–L**). In  $xCT^{+/+}$  as well as  $xCT^{-/-}$  mice, the distance walked was unaffected by chronic SAS treatment in both the OF (**Figures 5C,D**; KW test,  $xCT^{+/+}$ :  $p = 0.4502$ ,  $xCT^{-/-}$ :  $p = 0.9664$ ) and EPM (**Figures 5E,F**; KW test,  $xCT^{+/+}$ :  $p = 0.6306$ ,  $xCT^{-/-}$ :  $p = 0.9899$ ). Also the velocity in the EPM paradigm was unaffected by chronic SAS treatment in mice of both genotypes (**Figures 5G,H**; KW test,  $xCT^{+/+}$  mice:  $p = 0.6306$ ,  $xCT^{-/-}$  mice:  $p = 0.9936$ ). Furthermore, independent of the genotype of the

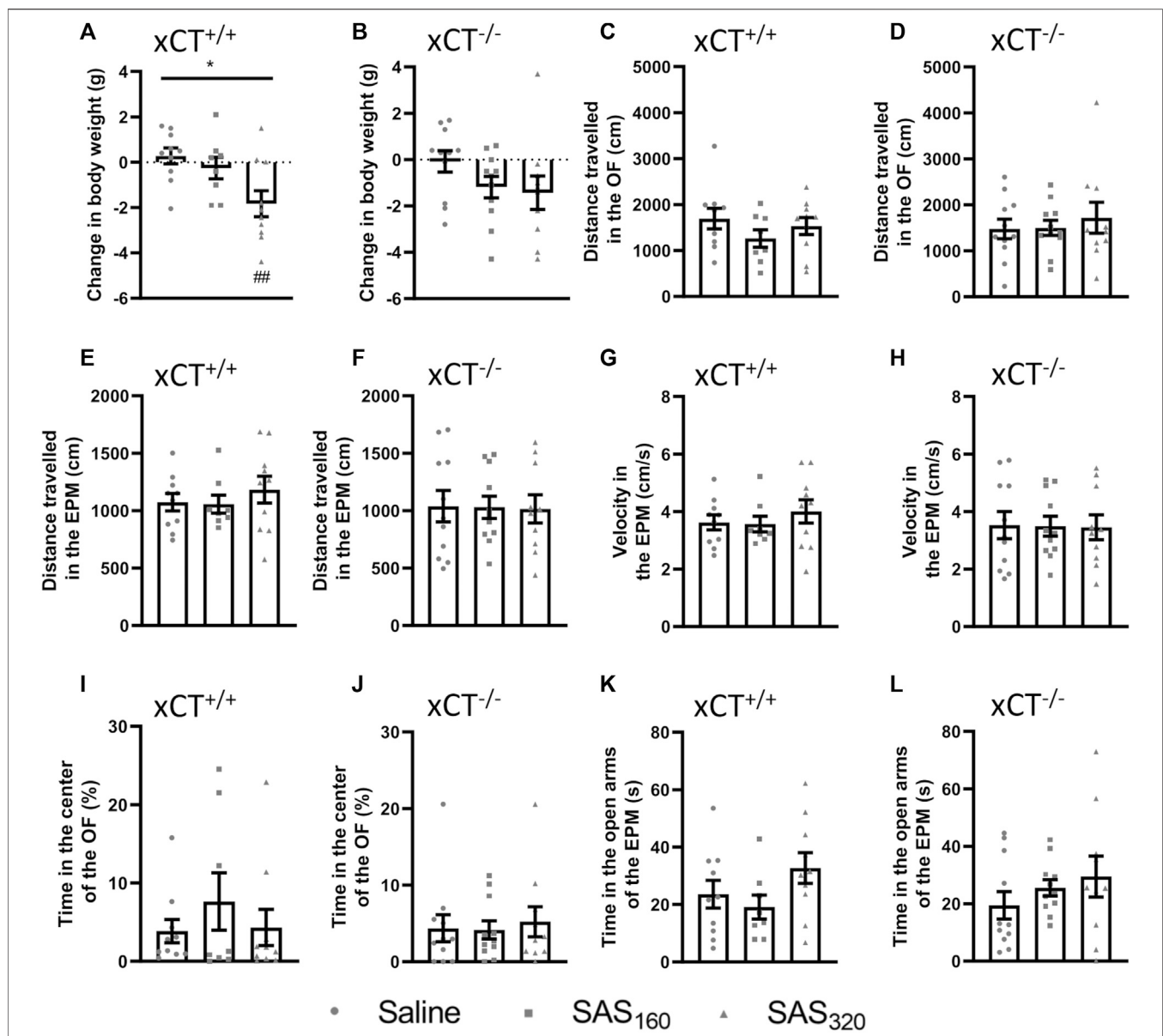


mice and regardless of the dose of SAS, no effect could be detected on the cumulative duration in the center of the OF (Figures 5I,J; KW test,  $xCT^{+/+}$  mice:  $p = 0.7243$ ,  $xCT^{-/-}$  mice:  $p = 0.9563$ ), neither on the time spent in the open arms of the EPM (Figures 5K,L; KW test,  $xCT^{+/+}$  mice:  $p = 0.2231$ ,  $xCT^{-/-}$  mice:  $p = 0.4807$ ). All together, these results demonstrate that chronic SAS treatment did not induce long-term changes in motor function or anxiety-like behavior.

### Chronic Sulfasalazine Treatment Does Neither Induce Neuronal Loss nor Changes in Myelin or Glial Cells in the Spinal Cord

Four weeks of treatment with either 160 mg/kg or 320 mg/kg of SAS did not induce any histological abnormalities in the spinal cord of  $xCT^{+/+}$  or  $xCT^{-/-}$  mice (Figure 6A). Also NeuN quantification did not show any significant effect of SAS treatment on the number of neurons present in the gray matter of the spinal cord (Figures 6B–D; KW test,  $xCT^{+/+}$ :  $p = 0.4600$ ,  $xCT^{-/-}$ :  $p = 0.9523$ ).

Immunohistochemical analysis of p25 $\alpha$  showed no difference in the number of oligodendrocytes in the gray matter of the spinal cord between saline and SAS-treated  $xCT^{+/+}$  (Figures 7A,B; KW test:  $p = 0.6024$ ) or  $xCT^{-/-}$  mice (Figures 7A,C; KW test:  $p = 0.0889$ ). All scores of the MBP staining were 0, indicating absence of vacuolization, myelin disorganization or myelin loss, regardless of the treatment or the genotype of the mice (Figure 8A). Furthermore, we quantified MAG immunoreactivity in the white matter as loss of the minor myelin proteins has been described as an early and sensitive biomarker for myelin degeneration in MS demyelinating lesions (Popescu and Lucchinetti, 2012). MAG stainings did not reveal any effect of SAS on the quality of the myelin sheet surrounding axons of  $xCT^{+/+}$  mice (Figures 8B,C; KW test:  $p = 0.5626$ ). However, in  $xCT^{-/-}$  mice MAG levels were affected by SAS treatment (Figures 8B,D; KW test:  $p = 0.0446$ ). Post-hoc analysis revealed significantly lower levels of MAG immunoreactivity in the spinal cord of  $xCT^{-/-}$  mice treated with 320 mg/kg of SAS, but not 160 mg/kg of SAS, compared to saline-treated mice



**FIGURE 5 |** Long-term effects of chronic sulfasalazine (SAS) treatment. After a wash-out period of one week, body weight of  $xCT^{+/+}$  (A) and  $xCT^{-/-}$  mice (B) was evaluated and plotted as the change compared to baseline (i.e. bodyweight at the start of the treatment). Distance travelled in the open field (OF) arena (C,D) or the elevated plus maze (EPM) (E,F), and velocity while exploring the EPM (G,H) were evaluated and represent long-term effects on locomotor function. Time spent in the center of the OF (I, J) or in the open arms of the EPM (K,L) was used as a parameter for anxiety-like behavior. For all tests,  $n = 8-10$   $xCT^{+/+}$  mice/group and  $n = 10-11$   $xCT^{-/-}$  mice/group were used. Data are presented as mean  $\pm$  SEM and analyzed using a Kruskal-Wallis test ( $*p < 0.05$ ) followed by Dunn's multiple comparisons for each dose of SAS compared to saline on each timepoint (### $p < 0.01$ ).

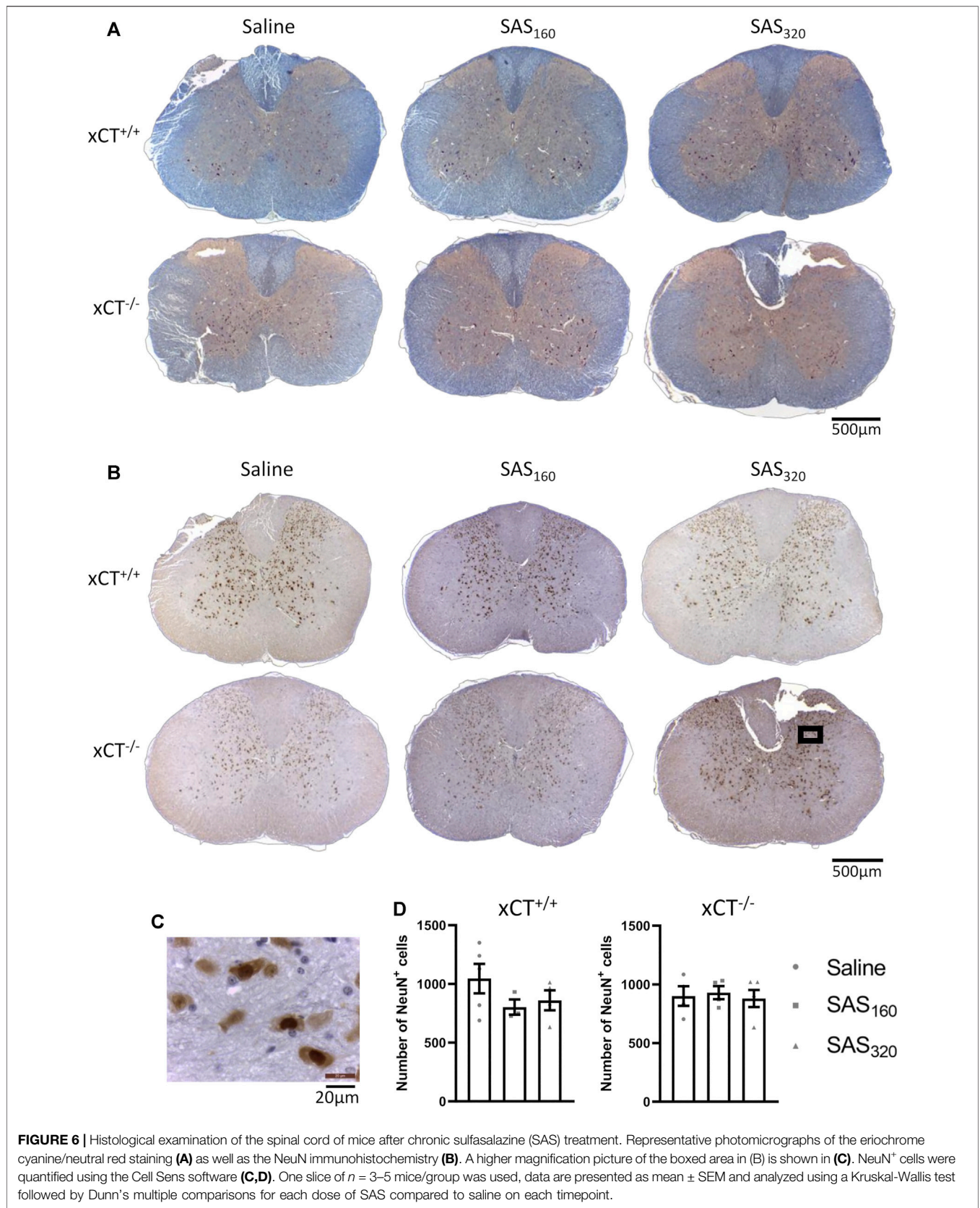
(Dunn's MTC, saline vs. SAS<sub>160</sub>:  $p = 0.2587$ , saline vs. SAS<sub>320</sub>:  $p = 0.0339$ ).

Finally, with the exception of one or two mice per group, immunohistochemistry for GFAP did not reveal prominent astrogliosis in either  $xCT^{+/+}$  (Figures 9A,B; Fisher's exact saline vs. SAS<sub>160</sub>:  $p > 0.9999$ , saline vs. SAS<sub>320</sub>:  $p = 0.5227$ ) or  $xCT^{-/-}$  mice (Figures 9A,C; Fisher's exact saline vs. SAS<sub>160</sub>:  $p > 0.9999$ , saline vs. SAS<sub>320</sub>:  $p > 0.9999$ ), regardless of the treatment. Iba-1 immunohistochemistry showed that microglia of saline-treated as well as those of mice treated with 160 or 320 mg/kg of

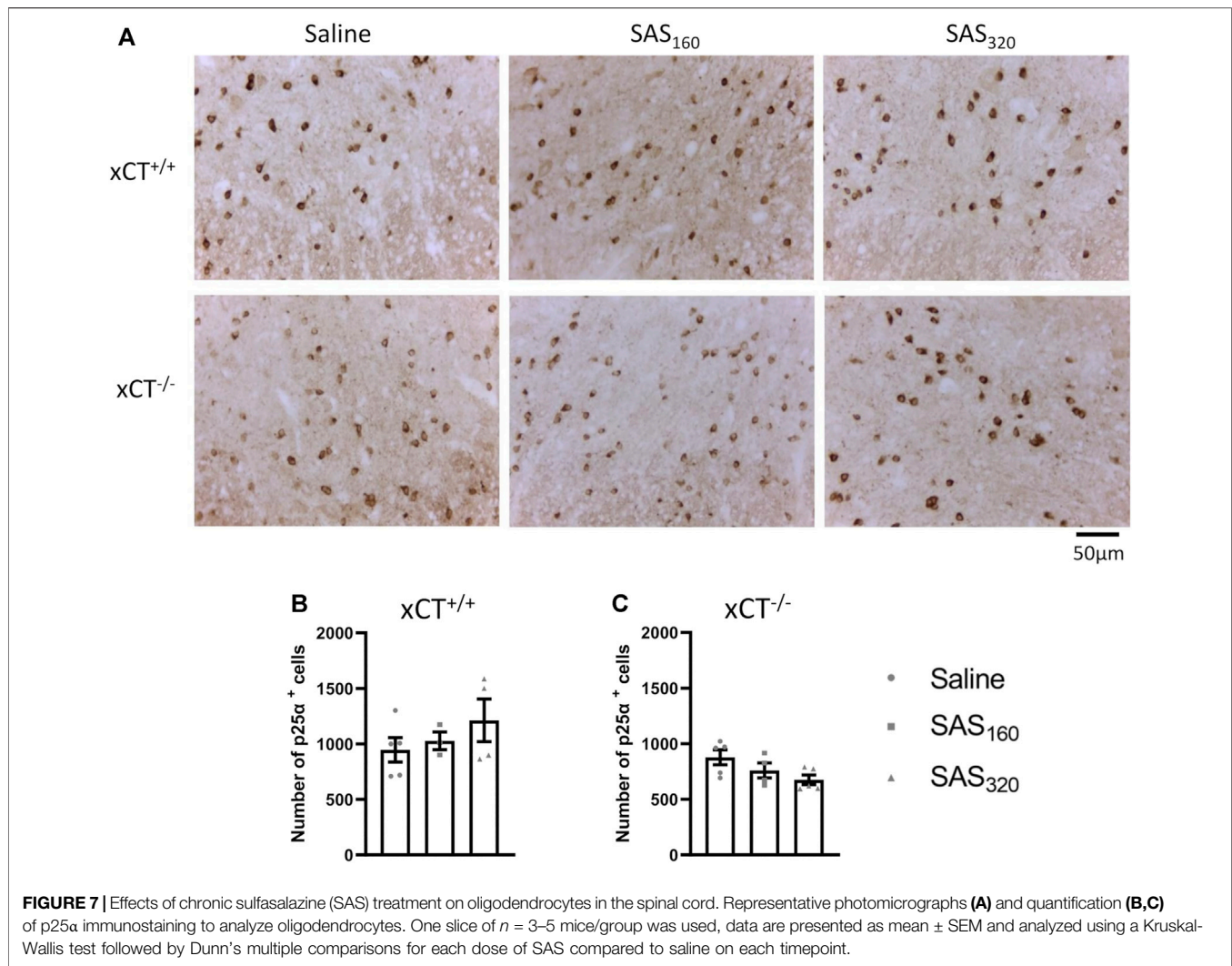
SAS are in a resting state, independent of genotype (type A microglia, Figure 9D).

## DISCUSSION

Although SAS is not specific in its action, it is one of the most widely used molecules to target system  $x_c^-$  in both preclinical (Gout et al., 2001; Ma et al., 2015; Leclercq et al., 2019; Hu et al., 2020) and clinical studies (Shitara et al., 2017; Takeuchi et al.,



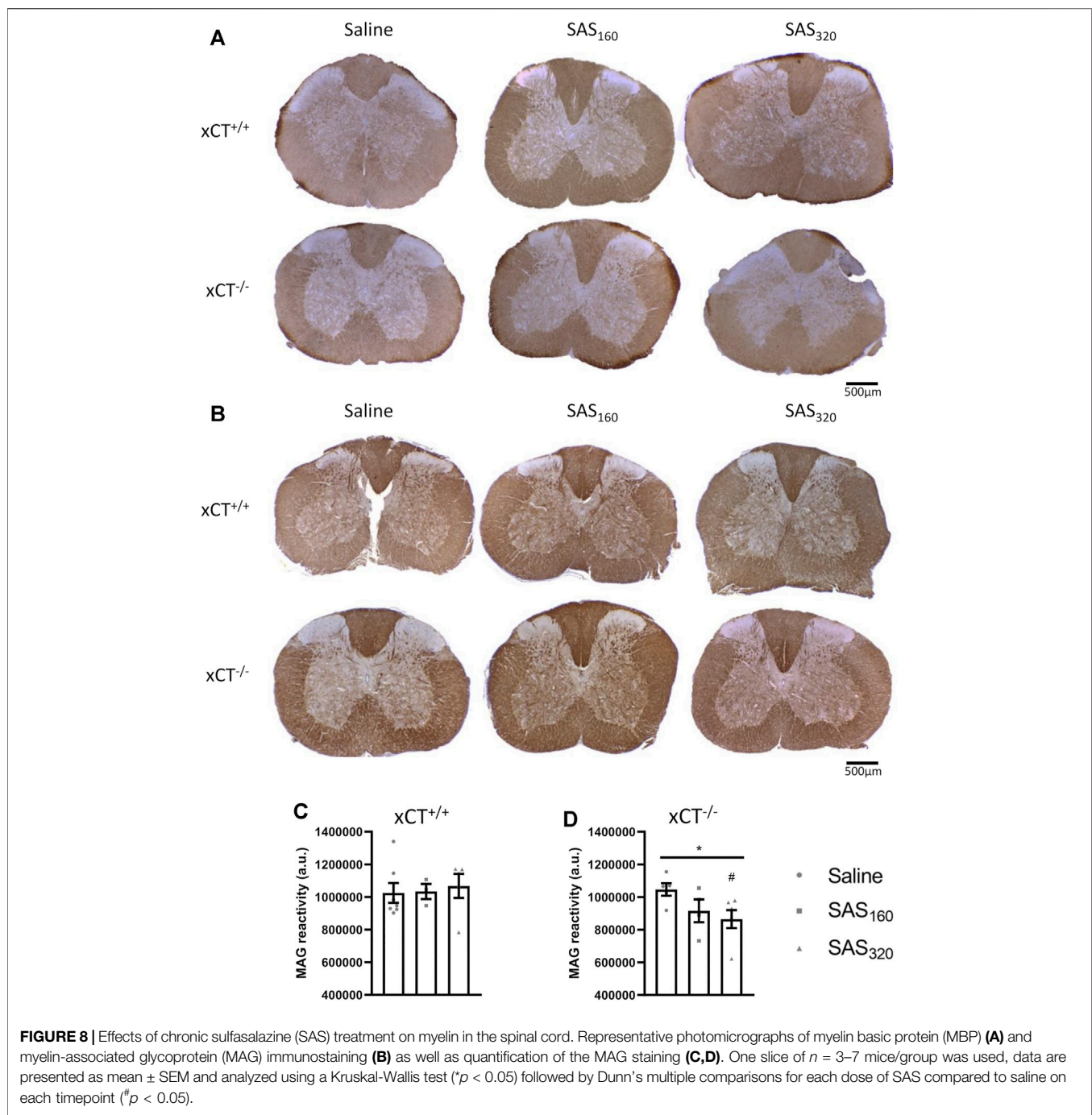
1084  
1085  
1086  
1087  
1088  
1089  
1090  
1091  
1092  
1093  
1094  
1095  
1096  
1097  
1098  
1099  
1100  
1101  
1102  
1103  
1104  
1105  
1106  
1107  
1108  
1109  
1110  
1111  
1112  
1113  
1114  
1115  
1116  
1117  
1118  
1119  
1120  
1121  
1122  
1123  
1124  
1125  
1126  
1127  
1128  
1129  
1130  
1131  
1132  
1133  
1134  
1135  
1136  
1137  
1138  
1139  
1140



2014). It has the advantage of being an FDA- and EMA-approved drug for treating Chron's disease, ulcerative colitis and rheumatoid arthritis due to its anti-inflammatory effects. While one might expect that this would guarantee the safety of the drug, clinical trials with glioblastoma patients show severe toxicity due to the use of SAS in high doses that are needed to achieve inhibition of system  $x_c^-$  (Robe et al., 2009). Also our results showed that chronic i. p. administration of SAS -160 mg/kg twice daily and 320 mg/kg once daily negatively affects the health status of the mice. We observed mortality in both  $xCT^{+/+}$  and  $xCT^{-/-}$  mice treated with SAS, independent of the dose. Importantly, this effect is independent of its action on system  $x_c^-$  as SAS-induced mortality was equally present in mice lacking this transporter. The wide range of adverse effects that are attributed to the use of SAS such as agranulocytosis, haemolytic anaemia, methaemoglobinaemia, hepatotoxicity, nephrotoxicity, neurotoxicity and pulmonary toxicity, might underlie this mortality (Das et al., 1973; Rains et al., 1995; Robe et al., 2009).

We also observed a clear effect of the injections on the body weight of the mice. Chronic i. p. injection with both saline and

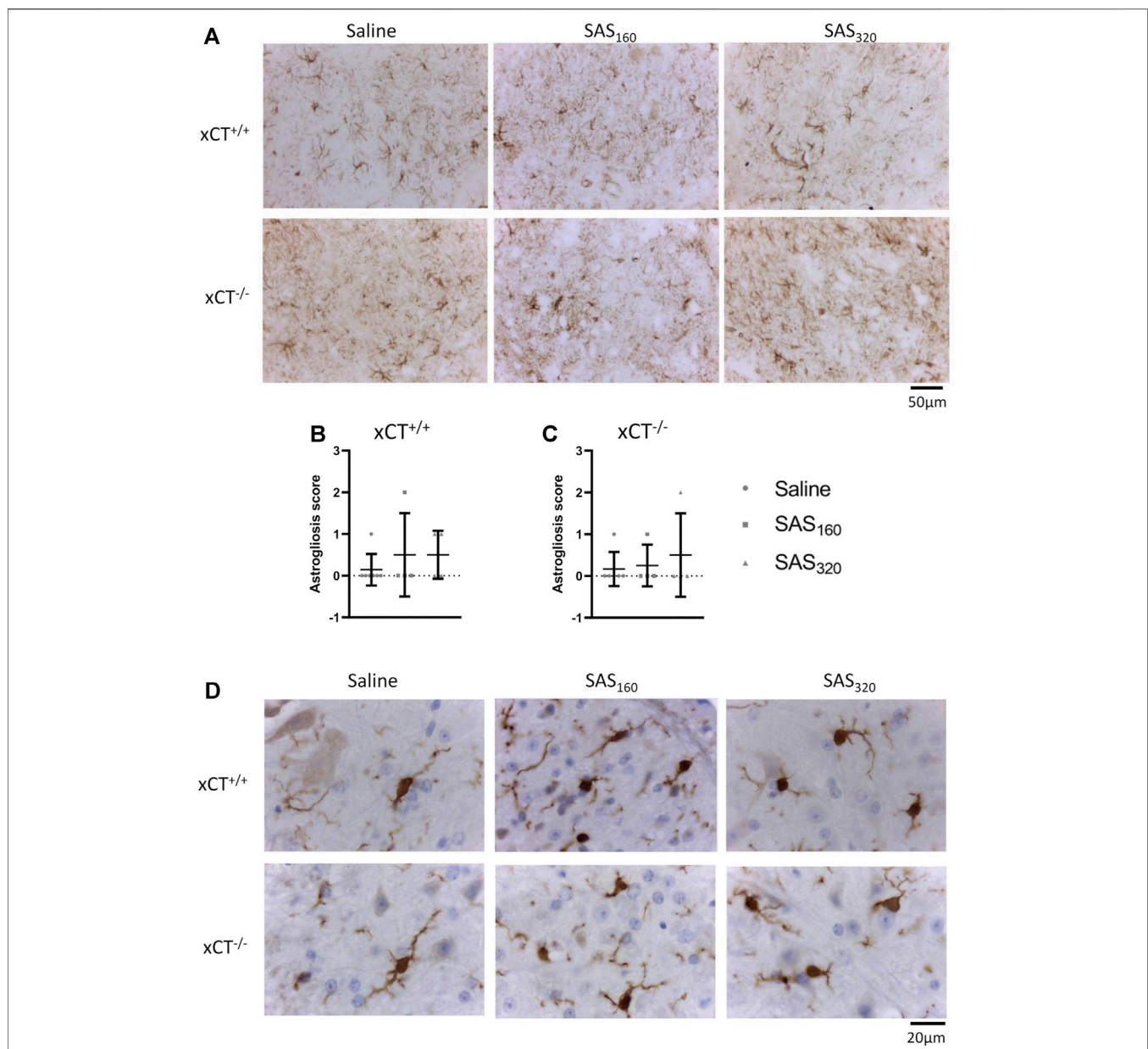
SAS induced weight loss, which is most probably the result of the chronic stress induced by the daily injections. Repeated vehicle injections were reported to increase the plasma corticosterone levels in BALB/c mice (Drude et al., 2011), which has been shown to affect body weight and food intake (Jeong et al., 2013; Harris, 2015). Also chronic stress itself negatively impacts food intake and body weight in mice (Jeong et al., 2013; Harris, 2015) and rats (Harris et al., 2002; Harris, 2015). Even though all mice lost weight over time, weight loss was more pronounced in the SAS groups, with a prolonged effect in mice treated with the highest dose. This is in accordance to observations in healthy rats that received 200–250 mg/kg of SAS i. p., twice a day for 7 days. While rats normally gain weight over time, this was not the case for the ones treated with SAS (Gout et al., 2001). The SAS-induced decrease in body weight might result from the adverse effects of SAS on the general wellbeing of the mice, presumably regulated via the toxic side effects of sulphapyridine, the main metabolite of absorbed SAS (Sjoquist et al., 1991). Nausea, dyspepsia and abdominal pain as well as loss of appetite and anorexia are typical side effects of SAS in patients with ulcerative colitis,



Crohn's disease and rheumatoid arthritis, and all of these seem to be mediated by sulphapyridine (Das et al., 1973). As sulphapyridine has no inhibitory action on system  $x_c^-$  (Gout et al., 2001) and given the same decrease in body weight in  $xCT^{-/-}$  mice, we are confident that none of these effects are mediated via chronic inhibition of this transporter.

On top of the mortality and the effect on body weight, this study shows a clear effect of SAS on body temperature shortly after injection. While in normal conditions a stressful event -such as an injection-would induce hyperthermia (Olivier

et al., 2003), mice treated with SAS showed a strong but temporary hyperthermic reaction that is independent of the presence of  $xCT$ . This could be due to the chronic inescapable stress experienced by the daily injections (Oka, 2018). However, saline-treated mice showed a normal stress-induced hyperthermic reaction even though they experienced the same level of stress, suggesting a specific effect of SAS either on the stress reaction of the mice or on their thermoregulation. Despite the general hypothesis that stress-induced hyperthermia is cytokine- and  $PGE_2$ -



**FIGURE 9 |** Effects of chronic sulfasalazine (SAS) treatment on astrocytes and microglia in the spinal cord. Representative photomicrographs of GFAP immunohistochemical staining (A). The extent of astroglia (normal (0) or presence of slight (Koppula et al., 2018), mild (Massie et al., 2015) or severe astroglia (Liu et al., 2020)) was quantified in xCT<sup>+/+</sup> (B) and xCT<sup>-/-</sup> (C) mice. Data are presented as mean ± SEM and analyzed using a Fisher’s exact test to compare normal GFAP staining (score 0) with signs of astroglia (scores 1–3) for each dose of SAS compared to saline. Representative photomicrographs of Iba-1 immunohistochemical staining after a wash-out period of one week (D). One slice of n = 4–7 mice/group (for GFAP) or n = 5–11 mice/group (for Iba-1) was used.

independent, some studies do show an involvement of PGE<sub>2</sub> in this phenomenon (Morimoto et al., 1991; Parrott & DM, 1995; Oka, 2018). Since SAS, and more specifically the metabolite mesalazine (Sjoquist et al., 1991), is able to decrease the PGE<sub>2</sub> production (Karagozian & Burakoff, 2007), this might abolish the PGE<sub>2</sub>-induced hyperthermia. As this is entirely hypothetical and cannot fully explain the hypothermic reaction after chronic SAS treatment, this phenomenon requires further investigation.

While SAS-induced chronic inhibition of system  $x_c^-$  was reported to induce myelin degeneration in the white matter of the spinal cord (Soria et al., 2016), we could not observe spinal cord damage after chronic SAS administration to xCT<sup>+/+</sup> or xCT<sup>-/-</sup> mice. Four weeks of SAS treatment did not influence the number of neurons or the myelin protein content in the spinal cord. However, whereas there was no decrease in MBP or MAG immunoreactivity in our study, Soria and colleagues detected a strong reduction in MBP and abnormalities in myelin folding in

spinal cord and sciatic nerve samples using a similar dose of SAS (320 mg/kg) and the same treatment period (Soria et al., 2016). This discrepancy could possibly be related to the strain of mice that has been used in the latter study. It should be noted that we did observe decreased MAG reactivity in  $xCT^{-/-}$  mice treated with SAS. Obviously, this effect cannot be mediated via chronic inhibition of system  $x_c^-$ , as these mice lack functional system  $x_c^-$ . Moreover, the absence of activated microglia and the lack of astrogliosis in the spinal tissue of all groups studied, further indicate that in our hands, chronic SAS treatment does not induce any cell damage in the spinal cord. This is in line with the *in vitro* observation that aminoacidic acid-induced inhibition of system  $x_c^-$  does not influence the viability of oligodendrocytes (Domercq et al., 1950) and further supported by an *in vivo* report on reduced demyelination in the EAE model for MS after SAS treatment (Evonuk et al., 1950).

We showed that both saline- and SAS treated mice tend to cover a decreased distance in the OF arena over the time of testing, which is most probably due to a habituation process (Sousa et al., 2006). The first time the mice encounter the OF arena, SAS treatment decreased the distance that both  $xCT^{+/+}$  and  $xCT^{-/-}$  mice travelled, again indicating that this effect is not mediated by inhibition of system  $x_c^-$ . This is further supported by the fact that naive  $xCT^{-/-}$  mice do not show abnormalities in spontaneous behavior and walk the same distance in the OF test compared to naive  $xCT^{+/+}$  mice (Bentea et al., 2015). As described above, SAS did not cause abnormalities in the spinal cord, making it unlikely that the effect on the distance walked in the OF results from toxicity on spinal motor pathways. Moreover, this effect disappeared after a wash-out period of one week. Therefore, the fact that mice treated with SAS travelled significantly less compared to saline injected mice the first time they perform the OF test, is most probably not reflecting a motor problem, but rather linked to motivation to explore the maze.

I.p. injection of a low dose of SAS (8 or 16 mg/kg) induced an anxiogenic effect in rats as evaluated using the OF and the EPM (Lutgen et al., 2014). However, in our study, SAS treatment did not have an effect on anxiety like-behavior in  $xCT^{+/+}$  mice in the same behavioral setups. We rather anticipated anxiolytic effects after chronic inhibition of system  $x_c^-$  using SAS, as seen in naive mice lacking functional system  $x_c^-$  (Bentea et al., 2015). Yet, in the current study also the saline-injected  $xCT^{-/-}$  mice did not show a convincing anxiolytic phenotype when compared to saline-injected  $xCT^{+/+}$  mice, and even a borderline-significant anxiogenic phenotype in the EPM (Mann-Whitney test: cumulative duration in the center of the OF: w2:  $p = 0.6047$ , w3:  $p = 0.04679$ , w4:  $p = 0.2895$ , w5:  $p = 0.9725$ ; time spent in the open arms of the EPM:  $p = 0.05116$ ). It is possible that the time of testing was too short to pick up differences in anxiety-like behavior as the anxiolytic effect in naive  $xCT^{-/-}$  mice was only present when the mice were allowed to explore the OF arena for a longer time (60 min) (Bentea et al., 2015). Moreover, differences in this type of behavior might be masked by the chronic stress of the daily injections. Studies showed that saline-treated rodents

already exhibit a stressed and anxious profile (Lapin, 1995) and that the time spent in the center of the OF can be influenced by the handling method (Gouveia and Hurst, 2019). Mice picked up by their tail, the method used to inject the mice in our study, spent less time in the center of the OF compared to mice being picked up in a tunnel (Gouveia and Hurst, 2019). Unexpectedly, we showed that treatment of  $xCT^{-/-}$  mice with 320 mg/kg of SAS induced a decreased time spent in the center of the OF, which would indicate an anxiogenic effect of SAS in these mice that is independent of system  $x_c^-$ .

Inhibition of system  $x_c^-$  not only has anxiolytic, but also antidepressant potential, as evidenced by naive as well as in LPS-injected  $xCT^{-/-}$  mice showing a decreased immobility-time in the MTS and in the forced swim test (Bentea et al., 2015; Albertini et al., 2018). Moreover, tumor-inoculated BALB/c mice showed reduced tumor-associated depressive-like behavior after chronic inhibition of system  $x_c^-$  using SAS (Nashed et al., 2017). However, in the current work, saline-injected  $xCT^{-/-}$  mice did not display an anti-depressive profile compared to  $xCT^{+/+}$  mice (Mann-Whitney test: immobility time in the MTS:  $p = 0.1230$ ), and we could not induce this phenotype by chronic inhibition of system  $x_c^-$  using SAS in  $xCT^{+/+}$  mice. In line with the data on anxiety-like behavior, the results on depressive-like behavior can be influenced by the chronic stress (Dunn and Swiergiel, 2008), in accordance with our previous observation that  $xCT^{-/-}$  mice lose their anti-depressive like phenotype when they are subjected to stress induced by chronic corticosterone administration (Demuyser et al., 2019).

## CONCLUSION

This work shows adverse effects of chronic SAS treatment on the wellbeing of the mice, in the absence of spinal cord damage, compromised motor function, anxiety-or depressive-like behavior. All effects of chronic SAS administration detected in this study are, however, independent of its function as an inhibitor of system  $x_c^-$  and thus originate from (toxic) off-target effects of the molecule or its metabolites. While a lot of progress has been made in the search for new molecules that selectively act on system  $x_c^-$  (Patel et al., 2019; Nehser et al., 2020), this study emphasizes the need for further research in this area to allow safe targeting of system  $x_c^-$  in diverse neurological disorders and cancer types.

## DATA AVAILABILITY STATEMENT

The raw data supporting the conclusions of this article will be made available by the authors, without undue reservation.

## ETHICS STATEMENT

The animal study was reviewed and approved by the ethical Committee for Animal Experiments of the Vrije Universiteit Brussel.

## Q12 AUTHOR CONTRIBUTIONS

LV, EB, CN and AM designed experiments; LV, LS, EB, PJ, AG, LD, LP and OL performed experiments; LV, LS, EB, CN and AM analyzed and interpreted data; LV and AM wrote the manuscript; all authors discussed the results, edited and commented on the article.

## Q13 FUNDING

This work was supported by a grant of the Medical Foundation Queen Elisabeth (GSKE, research funding to AM),

## REFERENCES

- Albertini, G., Deneyer, L., Ottestad-Hansen, S., Zhou, Y., Ates, G., Walrave, L., et al. (2018). Genetic Deletion of xCT Attenuates Peripheral and Central Inflammation and Mitigates LPS-Induced Sickness and Depressive-like Behavior in Mice. *Glia* 66 (9), 1845–1861. doi:10.1002/glia.23343
- B. Sjoquist and N.-O. Ahnfelt P. Andersson, R. D'argy, G. Fjellner, M. Hatsuoka, et al. editors (1991). in *Pharmacokinetics of Salazosulfapyridine (Sulfasalazine, SASP) (I): Plasma Kinetics and Plasma Metabolites in the Rat after a Single Intravenous or Oral Administration*.
- Bentea, E., Demuyser, T., Van Liefvering, J., Albertini, G., Deneyer, L., Nys, J., et al. (2015). Absence of System Xc<sup>-</sup> in Mice Decreases Anxiety and Depressive-like Behavior without Affecting Sensorimotor Function or Spatial Vision. *Prog. neuro-psychopharmacology Biol. Psychiatry* 59, 49–58. doi:10.1016/j.pnpbp.2015.01.010
- Bhutia, Y. D., Babu, E., Ramachandran, S., and Ganapathy, V. (2015). Amino Acid Transporters in Cancer and Their Relevance to "glutamine Addiction": Novel Targets for the Design of a New Class of Anticancer Drugs. *Cancer Res.* 75 (9), 1782–1788. doi:10.1158/0008-5472.can-14-3745
- Bouchat, J., Couturier, B., Marneffe, C., Gankam-Kengme, F., De Swert, K., Brion, J.-P., et al. (2017). Regional Oligodendrocytopathy and Astropathy Precede Myelin Loss and Blood-Brain Barrier Disruption in Murine Model of Osmotic Demyelination Syndrome. *Glia*, 66, 606–622. doi:10.1002/glia.23268
- Chintala, S., Li, W., Lamoreux, M. L., Ito, S., Wakamatsu, K., Sviderskaya, E. V., et al. (2005). Slc7a11 Gene Controls Production of Pheomelanin Pigment and Proliferation of Cultured Cells. *Proc. Natl. Acad. Sci. United States America* 102 (31), 10964–10969. doi:10.1073/pnas.0502856102
- Chung, W. J., Lyons, S. A., Nelson, G. M., Hamza, H., Gladson, C. L., Gillespie, G. Y., et al. (2005). Inhibition of Cystine Uptake Disrupts the Growth of Primary Brain Tumors. *J. Neurosci.* 25 (31), 7101–7110. doi:10.1523/jneurosci.5258-04.2005
- Correale, J., Olsson, T., Björk, J., Smedegård, G., Höjeberg, B., and Link, H. (1991). Sulfasalazine Aggravates Experimental Autoimmune Encephalomyelitis and Causes an Increase in the Number of Autoreactive T Cells. *J. neuroimmunology* 34 (2-3), 109–120. doi:10.1016/0165-5728(91)90120-v
- Cryan, J. F., and Mombereau, C. (2004). In Search of a Depressed Mouse: Utility of Models for Studying Depression-Related Behavior in Genetically Modified Mice. *Mol. Psychiatry* 9 (4), 326–357. doi:10.1038/sj.mp.4001457
- Dahlmanns, M., Yakubov, E., Chen, D., Sehm, T., Rauh, M., Savaskan, N., et al. (2017). Chemotherapeutic xCT Inhibitors Sorafenib and Erastin Unraveled with the Synaptic Optogenetic Function Analysis Tool. *Cel Death Discov.* 3, 17030. doi:10.1038/cddiscovery.2017.30
- Dai, L., Cao, Y., Chen, Y., Parsons, C., and Qin, Z. (2014). Targeting xCT, a Cystine-Glutamate Transporter Induces Apoptosis and Tumor Regression for KSHV/HIV-associated Lymphoma. *J. Hematol. Oncol.* 7, 30. doi:10.1186/1756-8722-7-30
- Das, K. M., Eastwood, M. A., McManus, J. P., and Sircus, W. (1973). Adverse Reactions during Salicylazosulfapyridine Therapy and the Relation with Drug Metabolism and Acetylator Phenotype. *New Engl. J. Med.* 289 (10), 491–495. doi:10.1056/nejm197309062891001
- De Bundel, D., Schallier, A., Loyens, E., Fernando, R., Miyashita, H., Van Liefvering, J., et al. (2011). Loss of System X(c)<sup>-</sup> Does Not Induce

Wetenschappelijk Fonds Willy Gepts of the UZBrussel and a Strategic Research Program of the Vrije Universiteit Brussel (SRP40/49, research funding). OL and LP are supported by the Fund for Scientific Research Flanders (FWO, PhD fellowship).

## ACKNOWLEDGMENTS

We kindly thank Frank Van Der Kelen and Ellen Swinnen (Vrije Universiteit Brussel, Belgium) for their help and technical assistance.

- Oxidative Stress but Decreases Extracellular Glutamate in hippocampus and Influences Spatial Working Memory and Limbic Seizure Susceptibility. *J. Neurosci.* 31 (15), 5792–5803. doi:10.1523/jneurosci.5465-10.2011
- Demuyser, T., Deneyer, L., Bentea, E., Albertini, G., Femenia, T., Walrave, L., et al. (2019). Slc7a11 (xCT) Protein Expression Is Not Altered in the Depressed Brain and System Xc<sup>-</sup> Deficiency Does Not Affect Depression-Associated Behaviour in the Corticosterone Mouse Model. *World J. Biol. Psychiatry: official J. World Fed. Societies Biol. Psychiatry* 20 (5), 381–392. doi:10.1080/15622975.2017.1371332
- Docherty, R. J., Yeats, J. C., and Piper, A. S. (1997). Capsazepine Block of Voltage-Activated Calcium Channels in Adult Rat Dorsal Root Ganglion Neurons in Culture. *Br. J. Pharmacol.* 121 (7), 1461–1467. doi:10.1038/sj.bjp.0701272
- Domercq, M., Sánchez-Gómez, M. V., Sherwin, C., Etxebarria, E., Fern, R., and Matute, C. (1950). System Xc<sup>-</sup> and Glutamate Transporter Inhibition Mediates Microglial Toxicity to Oligodendrocytes. *J. Immunol.*, 178, Baltimore, Md, 6549–6556. doi:10.4049/jimmunol.178.10.6549
- Doxsee, D. W., Gout, P. W., Kurita, T., Lo, M., Buckley, A. R., Wang, Y., et al. (2007). Sulfasalazine-induced Cystine Starvation: Potential Use for Prostate Cancer Therapy. *The Prostate* 67 (2), 162–171. doi:10.1002/pros.20508
- Drude, S., Geissler, A., Olfe, J., Starke, A., Domanska, G., Schuett, C., et al. (2011). Side Effects of Control Treatment Can Conceal Experimental Data when Studying Stress Responses to Injection and Psychological Stress in Mice. *Lab. Animal* 40 (4), 119–128. doi:10.1038/labanimal119
- Dunn, A. J., and Swiergiel, A. H. (2008). Effects of Acute and Chronic Stressors and CRF in Rat and Mouse Tests for Depression. *Ann. New York Acad. Sci.* 1148, 118–126. doi:10.1196/annals.1410.022
- Evonuk, K. S., Baker, B. J., Doyle, R. E., Moseley, C. E., Sestero, C. M., Johnston, B. P., et al. (1950). Inhibition of System Xc<sup>-</sup> Transporter Attenuates Autoimmune Inflammatory Demyelination. *J. Immunol.*, 195, Baltimore, Md, 450–463. doi:10.4049/jimmunol.1401108
- Fujiki, K., Inamura, H., Sugaya, T., and Matsuoka, M. (2019). Blockade of ALK4/5 Signaling Suppresses Cadmium- and Erastin-Induced Cell Death in Renal Proximal Tubular Epithelial Cells via Distinct Signaling Mechanisms. *Cel Death Differ.* 26 (11), 2371–2385. doi:10.1038/s41418-019-0307-8
- Gout, P. W., Buckley, A. R., Simms, C. R., and Bruchofsky, N. (2001). Sulfasalazine, a Potent Suppressor of Lymphoma Growth by Inhibition of the X(c)<sup>-</sup> Cystine Transporter: a New Action for an Old Drug. *Leukemia* 15 (10), 1633–1640. doi:10.1038/sj.leu.2402238
- Gouveia, K., and Hurst, J. L. (2019). Improving the Practicality of Using Non-aversive Handling Methods to Reduce Background Stress and Anxiety in Laboratory Mice. *Scientific Rep.* 9 (1), 20305. doi:10.1038/s41598-019-56860-7
- Granito, A., Marinelli, S., Negrini, G., Menetti, S., Benevento, F., and Bolondi, L. (2016). Prognostic Significance of Adverse Events in Patients with Hepatocellular Carcinoma Treated with Sorafenib. *Ther. Adv. Gastroenterol.* 9 (2), 240–249. doi:10.1177/1756283x15618129
- Guo, W., Zhao, Y., Zhang, Z., Tan, N., Zhao, F., Ge, C., et al. (2011). Disruption of xCT Inhibits Cell Growth via the ROS/autophagy Pathway in Hepatocellular Carcinoma. *Cancer Lett.* 312 (1), 55–61. doi:10.1016/j.canlet.2011.07.024
- Harris, R. B. (2015). Chronic and Acute Effects of Stress on Energy Balance: Are There Appropriate Animal Models?. *Am. J. Physiol. Regul. Integr. Comp. Physiol.* 308 (4), R250–R265. doi:10.1152/ajpregu.00361
- Harris, R. B., Mitchell, T. D., Simpson, J., Redmann, S. M., Jr., Youngblood, B. D., and Ryan, D. H. (2002). Weight Loss in Rats Exposed to Repeated Acute

1654  
1655  
1656  
1657  
1658  
1659  
1660  
1661  
1662  
1663  
1664  
1665  
1666  
1667  
1668  
1669  
1670  
1671  
1672  
1673  
1674  
1675  
1676  
1677  
1678  
1679  
1680  
1681  
1682  
1683  
1684  
1685  
1686  
1687  
1688  
1689  
1690  
1691  
1692  
1693  
1694  
1695  
1696  
1697  
1698  
1699  
1700  
1701  
1702  
1703  
1704  
1705  
1706  
1707  
1708  
1709  
1710

- 1711 Restraint Stress Is Independent of Energy or Leptin Status. *Am. J. Physiol. Regul.*  
1712 *Integr. Comp. Physiol.* 282 (1), R77–R88. doi:10.1152/ajpregu.2002.282.1.R77
- 1713 Hu, K., Li, K., Lv, J., Feng, J., Chen, J., Wu, H., et al. (2020). Suppression of  
1714 the SLC7A11/glutathione axis Causes Synthetic Lethality in KRAS-Mutant Lung  
1715 Adenocarcinoma. *J. Clin. Invest.* 130 (4), 1752–1766. doi:10.1172/jci124049
- 1716 Jeong, J. Y., Lee, D. H., and Kang, S. S. (2013). Effects of Chronic Restraint Stress on  
1717 Body Weight, Food Intake, and Hypothalamic Gene Expressions in Mice.  
1718 *Endocrinol. Metab. (Seoul, Korea)* 28 (4), 288–296. doi:10.3803/EnM.2013.28.  
1719 4.288
- 1720 Karagozian, R., and Burakoff, R. (2007). The Role of Mesalamine in the Treatment  
1721 of Ulcerative Colitis. *Ther. Clin. Risk Manag.* 3 (5), 893–903.
- 1722 Koppula, P., Zhang, Y., Zhuang, L., and Gan, B. (2018). Amino Acid Transporter  
1723 SLC7A11/xCT at the Crossroads of Regulating Redox Homeostasis and  
1724 Nutrient Dependency of Cancer. *Cancer Commun. (London, England)* 38  
1725 (1), 12. doi:10.1186/s40880-018-0288-x
- 1726 Lapin, I. P. (1995). Only Controls: Effect of Handling, Sham Injection, and  
1727 Intraperitoneal Injection of Saline on Behavior of Mice in an Elevated Plus-  
1728 Maze. *J. Pharmacol. Toxicol. Methods* 34 (2), 73–77. doi:10.1016/1056-8719(95)  
1729 00025-d
- 1730 Leclercq, K., Liefvering, J. V., Albertini, G., Neveux, M., Dardenne, S., Mairet-  
1731 Coello, G., et al. (2019). Anticonvulsant and Antiepileptogenic Effects of System  
1732 Xc<sup>-</sup> Inactivation in Chronic Epilepsy Models. *Epilepsia* 60 (7), 1412–1423.  
1733 doi:10.1111/epi.16055
- 1734 Lewerenz, J., Hewett, S. J., Huang, Y., Lambros, M., Gout, P. W., Kalivas, P. W.,  
1735 et al. (2013). The Cystine/glutamate Antiporter System X(c)<sup>-</sup> in Health and  
1736 Disease: From Molecular Mechanisms to Novel Therapeutic Opportunities.  
1737 *Antioxid. Redox signaling* 18 (5), 522–555. doi:10.1089/ars.2011.4391
- 1738 Liu, L., Liu, R., Liu, Y., Li, G., Chen, Q., Liu, X., et al. (2020). Cystine-glutamate  
1739 Antiporter xCT as a Therapeutic Target for Cancer. *Cell Biochem Funct.* 39,  
1740 174–179. doi:10.1002/cbf.3581
- 1741 Liu, L., and Simon, S. A. (1997). Capsazepine, a Vanilloid Receptor Antagonist,  
1742 Inhibits Nicotinic Acetylcholine Receptors in Rat Trigeminal Ganglia. *Neurosci.*  
1743 *Letts.* 228 (1), 29–32. doi:10.1016/s0304-3940(97)00358-3
- 1744 Lo, M., Ling, V., Low, C., Wang, Y. Z., and Gout, P. W. (2010). Potential Use of the  
1745 Anti-inflammatory Drug, Sulfasalazine, for Targeted Therapy of Pancreatic  
1746 Cancer. *Curr. Oncol. (Toronto, Ont)* 17 (3), 9–16. doi:10.3747/co.v17i3.485
- 1747 Lo, M., Wang, Y. Z., and Gout, P. W. (2008). The X(c)<sup>-</sup> Cystine/glutamate  
1748 Antiporter: a Potential Target for Therapy of Cancer and Other Diseases.  
1749 *J. Cell. Physiol.* 215 (3), 593–602. doi:10.1002/jcp.21366
- 1750 Lutgen, V., Resch, J., Qualmann, K., Raddatz, N. J., Panhans, C., Olander, E. M.,  
1751 et al. (2014). Behavioral Assessment of Acute Inhibition of System Xc<sup>-</sup> in  
1752 Rats. *Psychopharmacology* 231 (24), 4637–4647. doi:10.1007/s00213-014-  
1753 3612-4
- 1754 Ma, M. Z., Chen, G., Wang, P., Lu, W. H., Zhu, C. F., Song, M., et al. (2015). Xc<sup>-</sup>-  
1755 Inhibitor Sulfasalazine Sensitizes Colorectal Cancer to Cisplatin by a GSH-  
1756 dependent Mechanism. *Cancer Lett.* 368 (1), 88–96. doi:10.1016/j.canlet.2015.  
1757 07.031
- 1758 Massie, A., Boillee, S., Hewett, S., Knackstedt, L., and Lewerenz, J. (2015). Main  
1759 Path and Byways: Non-vesicular Glutamate Release by System Xc<sup>-</sup> as an  
1760 Important Modifier of Glutamatergic Neurotransmission. *J. Neurochem.* 135  
1761 (6), 1062–1079. doi:10.1111/jnc.13348
- 1762 Massie, A., Schallier, A., Kim, S. W., Fernando, R., Kobayashi, S., Beck, H., et al.  
1763 (2011). Dopaminergic Neurons of System X(c)<sup>-</sup>-Deficient Mice Are Highly  
1764 Protected against 6-Hydroxydopamine-Induced Toxicity. *FASEB J. : official*  
1765 *Publ. Fed. Am. Societies Exp. Biol.* 25 (4), 1359–1369. doi:10.1096/fj.10-177212
- 1766 McDonough, W., Rich, J., Aragon, I. V., Abou Saleh, L., Boyd, A., Richter, A., et al.  
1767 (2020). Inhibition of Type 4 cAMP-Phosphodiesterases (PDE4s) in Mice  
Induces Hypothermia via Effects on Behavioral and Central Autonomous  
Thermoregulation. *Biochem. Pharmacol.* 180, 114158. doi:10.1016/j.bcp.2020.  
114158
- Mehta, A., Prabhakar, M., Kumar, P., Deshmukh, R., and Sharma, P. L. (2013).  
Excitotoxicity: Bridge to Various Triggers in Neurodegenerative Disorders. *Eur.*  
*J. Pharmacol.* 698 (1–3), 6–18. doi:10.1016/j.ejphar.2012.10.032
- Mesci, P., Zaidi, S., Lobsiger, C. S., Millicamps, S., Escartin, C., Seilhean, D., et al.  
(2015). System xC<sup>-</sup> Is a Mediator of Microglial Function and its Deletion Slows  
Symptoms in Amyotrophic Lateral Sclerosis Mice. *Brain.* 138 (Pt 1), 53–68.  
doi:10.1093/brain/awu312
- Morimoto, A., Watanabe, T., Morimoto, K., Nakamori, T., and Murakami, N. (1991). Possible Involvement of Prostaglandins in Psychological Stress-Induced Responses in Rats. *J. Physiol.* 443, 421–429. doi:10.1113/jphysiol.1991.sp018841
- Nashed, M. G., Ungard, R. G., Young, K., Zacal, N. J., Seidlitz, E. P., Fazzari, J., et al. (2017). Behavioural Effects of Using Sulfasalazine to Inhibit Glutamate Released by Cancer Cells: A Novel Target for Cancer-Induced Depression, and Has Received Consultant And/or Speaker Fees from AstraZeneca, Bristol-Myers Squibb, Lundbeck, Pfizer, Servier and Sunovion. *Scientific Rep.*, Other authors declare no competing financial interest. *PubMed PMID: 28120908; PubMed Central PMCID: PMCPCMS264609 Award, Brain & Behaviour Research Foundation, CIHR, Eli Lilly, Hamilton Health Sciences Foundation, 7. Bickell Foundation, Ontario Brain Institute, Ontario Mental Health Foundation, Pfizer and Society for Women's Health Research, 41382.* doi:10.1038/srep41382
- Nehser, M., Dark, J., Schweitzer, D., Campbell, M., Zwicker, J., Hitt, D. M., et al. (2020). System X(c)<sup>-</sup> Antiporter Inhibitors: Azo-Linked Amino-Naphthyl-Sulfonate Analogues of Sulfasalazine. *Neurochem. Res.* 45 (6), 1375–1386. doi:10.1007/s11064-019-02901-6
- Noh, J. H., Gwag, B. J., and Chung, J. M. (2006). Underlying Mechanism for NMDA Receptor Antagonism by the Anti-inflammatory Drug, Sulfasalazine, in Mouse Cortical Neurons. *Neuropharmacology* 50 (1), 1–15. doi:10.1016/j.neuropharm.2005.07.020
- Noseworthy, J. H., O'Brien, P., Erickson, B. J., Lee, D., Sneve, D., Ebers, G. C., et al. (1998). The Mayo Clinic-Canadian Cooperative Trial of Sulfasalazine in Active Multiple Sclerosis. *Neurology* 51 (5), 1342–1352. doi:10.1212/wnl.51.5.1342
- Oka, T. (2018). Stress-induced Hyperthermia and Hypothermia. *Handbook Clin. Neurol.* 157, 599–621. doi:10.1016/b978-0-444-64074-1.00035-5
- Olivier, B., Zethof, T., Pattij, T., van Boogaert, M., van Oorschot, R., Leahy, C., et al. (2003). Stress-induced Hyperthermia and Anxiety: Pharmacological Validation. *Eur. J. Pharmacol.* 463 (1–3), 117–132. doi:10.1016/s0014-2999(03)01326-8
- Oloquequi, J., Cornejo-Córdova, E., Verdaguer, E., Soriano, F. X., Binivignat, O., Auladell, C., et al. (2018). Excitotoxicity in the Pathogenesis of Neurological and Psychiatric Disorders: Therapeutic Implications. *J. Psychopharmacol. (Oxford, England)* 32 (3), 265–275. doi:10.1177/0269881118754680
- Parrott, R. F., and Dm, L. L. (1995). Restraint, but Not Frustration, Induces Prostaglandin-Mediated Hyperthermia in Pigs. *Physiol. Behav.* 57 (6), 1051–1055. doi:10.1016/0031-9384(94)00343-4
- Patel, D., Kharkar, P. S., Gandhi, N. S., Kaur, E., Dutt, S., and Nandave, M. (2019). Novel Analogs of Sulfasalazine as System Xc<sup>-</sup> Antiporter Inhibitors: Insights from the Molecular Modeling Studies. *Drug Development Res.* 80 (6), 758–777. doi:10.1002/ddr.21557
- Popescu, B. F., and Lucchinetti, C. F. (2012). Pathology of Demyelinating Diseases. *Annu. Rev. Pathol.* 7, 185–217. doi:10.1146/annurev-pathol-011811-132443
- Prosiegel, M., Neu, I., Vogl, S., Hoffmann, G., Wildfeuer, A., and Ruhlenstroth-Bauer, G. (1990). Suppression of Experimental Autoimmune Encephalomyelitis by Sulfasalazine. *Acta Neurol. Scand.* 81 (3), 237–238. doi:10.1111/j.1600-0404.1990.tb00973.x
- Radi, Z. A., Heuvelman, D. M., Masferrer, J. L., and Benson, E. L. (2011). Pharmacologic Evaluation of Sulfasalazine, FTY720, and anti-IL-12/23p40 in a TNBS-Induced Crohn's Disease Model. *Dig. Dis. Sci.* 56 (8), 2283–2291. doi:10.1007/s10620-011-1628-8
- Rains, C. P., Noble, S., Faulds, D., and Sulfasalazine (1995). A Review of its Pharmacological Properties and Therapeutic Efficacy in the Treatment of Rheumatoid Arthritis. *Drugs* 50 (1), 137–156. doi:10.2165/00003495-199550010-00009
- Robe, P. A., Martin, D. H., Nguyen-Khac, M. T., Artesi, M., Deprez, M., Albert, A., et al. (2009). Early Termination of ISRCTN45828668, a Phase 1/2 Prospective, Randomized Study of Sulfasalazine for the Treatment of Progressing Malignant Gliomas in Adults. *BMC cancer* 9, 372. doi:10.1186/1471-2407-9-372
- Rodgers, R. J., Cole, J. C., Aboualfa, K., and Stephenson, L. H. (1995). Ethopharmacological Analysis of the Effects of Putative 'anxiogenic' Agents in the Mouse Elevated Plus-Maze. *Pharmacol. Biochem. Behav.* 52 (4), 805–813. doi:10.1016/0091-3057(95)00190-8
- Ryu, B. R., Lee, Y. A., Won, S. J., Noh, J. H., Chang, S. Y., Chung, J. M., et al. (2003). The Novel Neuroprotective Action of Sulfasalazine through Blockade of NMDA Receptors. *J. Pharmacol. Exp. Ther.* 305 (1), 48–56. doi:10.1124/jpet.102.042606

Q15

Q16

- 1825 Sato, H., Shiiya, A., Kimata, M., Maebara, K., Tamba, M., Sakakura, Y., et al. (2005).  
 1826 Redox Imbalance in Cystine/glutamate Transporter-Deficient Mice. *J. Biol.*  
 1827 *Chem.* 280 (45), 37423–37429. doi:10.1074/jbc.M506439200 1882
- 1828 Shin, M. R., Kim, K. J., Kim, S. H., Kim, S. J., Seo, B. I., An, H. J., et al. (2017).  
 1829 Comparative Evaluation between Sulfasalazine Alone and in Combination with  
 1830 Herbal Medicine on DSS-Induced Ulcerative Colitis Mice. *Biomed. Res. Int.*  
 1831 2017, 6742652. doi:10.1155/2017/6742652 1883
- 1832 Shitara, K., Doi, T., Nagano, O., Imamura, C. K., Ozeki, T., Ishii, Y., et al. (2017).  
 1833 Dose-escalation Study for the Targeting of CD44v(+) Cancer Stem Cells by  
 1834 Sulfasalazine in Patients with Advanced Gastric Cancer (EPOC1205). *Gastric*  
 1835 *Cancer* 20 (2), 341–349. doi:10.1007/s10120-016-0610-8 1884
- 1836 Soliman, N. A., Keshk, W. A., Rizk, F. H., and Ibrahim, M. A. (2019). The  
 1837 Possible Ameliorative Effect of Simvastatin versus Sulfasalazine on Acetic  
 1838 Acid Induced Ulcerative Colitis in Adult Rats. *Chemico-biological*  
 1839 *interactions* 298, 57–65. doi:10.1016/j.cbi.2018.11.002 1885
- 1840 Sontheimer, H., and Bridges, R. J. (2012). Sulfasalazine for Brain Cancer Fits. *Expert*  
 1841 *Opin. Investig. Drugs* 21 (5), 575–578. doi:10.1517/13543784.2012.670634 1886
- 1842 Soria, F. N., Zabala, A., Pampliega, O., Palomino, A., Miguelez, C., Ugedo, L., et al.  
 1843 (2016). Cystine/glutamate Antiporter Blockage Induces Myelin Degeneration.  
 1844 *Glia* 64 (8), 1381–1395. doi:10.1002/glia.23011 1887
- 1845 Sousa, N., Almeida, O. F., and Wotjak, C. T. (2006). A Hitchhiker's Guide to  
 1846 Behavioral Analysis in Laboratory Rodents. *Genes, Brain Behav.* (5 Suppl. 2),  
 1847 5–24. doi:10.1111/j.1601-183X.2006.00228.x 1888
- 1848 Steru, L., Chermat, R., Thierry, B., and Simon, P. (1985). The Tail Suspension Test:  
 1849 a New Method for Screening Antidepressants in Mice. *Psychopharmacology* 85  
 1850 (3), 367–370. doi:10.1007/bf00428203 1889
- 1851 Takeuchi, S., Wada, K., Nagatani, K., Otani, N., Osada, H., and Nawashiro, H.  
 1852 (2014). Sulfasalazine and Temozolomide with Radiation Therapy for Newly  
 1853 Diagnosed Glioblastoma. *Neurol. India* 62 (1), 42–47. doi:10.4103/0028-3886.  
 1854 128280 1890
- 1855 Ungard, R. G., Seidlitz, E. P., and Singh, G. (2014). Inhibition of Breast Cancer-Cell  
 1856 Glutamate Release with Sulfasalazine Limits Cancer-Induced Bone Pain. *Pain*  
 1857 155 (1), 28–36. doi:10.1016/j.pain.2013.08.030 1891
- 1858 Wada, F., Koga, H., Akiba, J., Niizeki, T., Iwamoto, H., Ikezono, Y., et al. (2018).  
 1859 High Expression of CD44v9 and xCT in Chemoresistant Hepatocellular  
 1860 Carcinoma: Potential Targets by Sulfasalazine. *Cancer Sci.* 109 (9),  
 1861 2801–2810. doi:10.1111/cas.13728 1892
- 1862 Weber, C. K., Liptay, S., Wirth, T., Adler, G., and Schmid, R. M. (2000).  
 1863 Suppression of NF-kappaB Activity by Sulfasalazine Is Mediated by Direct  
 1864 Inhibition of IkappaB Kinases Alpha and Beta. *Gastroenterology* 119 (5),  
 1865 1209–1218. doi:10.1053/gast.2000.19458 1893
- 1866 Yu, M., Gai, C., Li, Z., Ding, D., Zheng, J., Zhang, W., et al. (2019). Targeted  
 1867 Exosome-Encapsulated Erastin Induced Ferroptosis in Triple Negative Breast  
 1868 Cancer Cells. *Cancer Sci.* 110 (10), 3173–3182. doi:10.1111/cas.14181 1894
- 1869 Zheng, W., Winter, S. M., Mayersohn, M., Bishop, J. B., and Sipes, I. G. (1993).  
 1870 Toxicokinetics of Sulfasalazine (Salicylazosulfapyridine) and its  
 1871 Metabolites in B6C3F1 Mice. *Drug Metab. disposition: Biol. fate*  
 1872 *chemicals* 21 (6), 1091–1097. 1895
- 1873 **Conflict of Interest:** The authors declare that the research was conducted in the  
 1874 absence of any commercial or financial relationships that could be construed as a  
 1875 potential conflict of interest. 1896
- 1876 *Copyright © 2021 Verbruggen, Sprimont, Bentea, Janssen, Gharib, Deneyer, De*  
 1877 *Pauw, Lara, Sato, Nicaise and Massie. This is an open-access article distributed*  
 1878 *under the terms of the Creative Commons Attribution License (CC BY). The use,*  
 1879 *distribution or reproduction in other forums is permitted, provided the original*  
 1880 *author(s) and the copyright owner(s) are credited and that the original publication*  
 1881 *in this journal is cited, in accordance with accepted academic practice. No use,*  
 1882 *distribution or reproduction is permitted which does not comply with these terms.*  
 1883 1897
- 1884 1898
- 1885 1899
- 1886 1900
- 1887 1901
- 1888 1902
- 1889 1903
- 1890 1904
- 1891 1905
- 1892 1906
- 1893 1907
- 1894 1908
- 1895 1909
- 1896 1910
- 1897 1911
- 1898 1912
- 1899 1913
- 1900 1914
- 1901 1915
- 1902 1916
- 1903 1917
- 1904 1918
- 1905 1919
- 1906 1920
- 1907 1921
- 1908 1922
- 1909 1923
- 1910 1924
- 1911 1925
- 1912 1926
- 1913 1927
- 1914 1928
- 1915 1929
- 1916 1930
- 1917 1931
- 1918 1932
- 1919 1933
- 1920 1934
- 1921 1935
- 1922 1936
- 1923 1937
- 1924 1938