

RESEARCH OUTPUTS / RÉSULTATS DE RECHERCHE

Elp3 drives Wnt-dependent tumor initiation and regeneration in the intestine

Ladang, Aurélie; Rapino, Francesca; Heukamp, Lukas C; Tharun, Lars; Shostak, Kateryna; Hermand, Damien; Delaunay, Sylvain; Klevernic, Iva; Jiang, Zheshen; Jacques, Nicolas; Jamart, Diane; Migeot, Valérie; Florin, Alexandra; Göktuna, Serkan; Malgrange, Brigitte; Sansom, Owen J; Nguyen, Laurent; Büttner, Reinhard; Close, Pierre; Chariot, Alain

Published in:

The Journal of experimental medicine

DOI:

[10.1084/jem.20142288](https://doi.org/10.1084/jem.20142288)

Publication date:

2015

Document Version

Publisher's PDF, also known as Version of record

[Link to publication](#)

Citation for published version (HARVARD):

Ladang, A, Rapino, F, Heukamp, LC, Tharun, L, Shostak, K, Hermand, D, Delaunay, S, Klevernic, I, Jiang, Z, Jacques, N, Jamart, D, Migeot, V, Florin, A, Göktuna, S, Malgrange, B, Sansom, OJ, Nguyen, L, Büttner, R, Close, P & Chariot, A 2015, 'Elp3 drives Wnt-dependent tumor initiation and regeneration in the intestine', *The Journal of experimental medicine*, vol. 212, no. 12, pp. 2057-75. <https://doi.org/10.1084/jem.20142288>

General rights

Copyright and moral rights for the publications made accessible in the public portal are retained by the authors and/or other copyright owners and it is a condition of accessing publications that users recognise and abide by the legal requirements associated with these rights.

- Users may download and print one copy of any publication from the public portal for the purpose of private study or research.
- You may not further distribute the material or use it for any profit-making activity or commercial gain
- You may freely distribute the URL identifying the publication in the public portal ?

Take down policy

If you believe that this document breaches copyright please contact us providing details, and we will remove access to the work immediately and investigate your claim.

Elp3 drives Wnt-dependent tumor initiation and regeneration in the intestine

Aurélie Ladang,^{1,2,4*} Francesca Rapino,^{1,3,4*} Lukas C. Heukamp,⁶ Lars Tharun,⁶ Kateryna Shostak,^{1,2,4} Damien Hermand,⁷ Sylvain Delaunay,^{1,3,4} Iva Klevernic,^{1,2,4} Zhesheng Jiang,^{1,2,4} Nicolas Jacques,^{1,2,4} Diane Jamart,^{1,3,4} Valérie Migeot,⁷ Alexandra Florin,⁶ Serkan Göktuna,^{1,2,4} Brigitte Malgrange,^{1,5} Owen J. Sansom,⁸ Laurent Nguyen,^{1,5,9} Reinhard Büttner,⁶ Pierre Close,^{1,3,4**} and Alain Chariot^{1,2,4,9**}

¹Interdisciplinary Cluster for Applied Genoproteomics, ²Laboratory of Medical Chemistry, ³Laboratory of Cancer Signaling, ⁴GIGA-Signal Transduction, and ⁵GIGA Neurosciences, University of Liège, 4000 Liège, Belgium

⁶Institut für Pathologie, University Hospital Cologne, 50937 Cologne, Germany

⁷Unité de Recherche en Physiologie Moléculaire-Laboratoire de Génétique Moléculaire, University of Namur, 5000 Namur, Belgium

⁸Cancer Research UK Beatson Institute, Glasgow G61 1BD, Scotland, UK

⁹Walloon Excellence in Life Sciences and Biotechnology, 1300 Wavre, Belgium

Tumor initiation in the intestine can rapidly occur from *Lgr5*⁺ crypt columnar stem cells. *Dclk1* is a marker of differentiated Tuft cells and, when coexpressed with *Lgr5*, also marks intestinal cancer stem cells. Here, we show that *Elp3*, the catalytic subunit of the Elongator complex, is required for Wnt-driven intestinal tumor initiation and radiation-induced regeneration by maintaining a subpool of *Lgr5*⁺/*Dclk1*⁺/*Sox9*⁺ cells. *Elp3* deficiency dramatically delayed tumor appearance in *Apc*-mutated intestinal epithelia and greatly prolonged mice survival without affecting the normal epithelium. Specific ablation of *Elp3* in *Lgr5*⁺ cells resulted in marked reduction of polyp formation upon *Apc* inactivation, in part due to a decreased number of *Lgr5*⁺/*Dclk1*⁺/*Sox9*⁺ cells. Mechanistically, *Elp3* is induced by Wnt signaling and promotes *Sox9* translation, which is needed to maintain the subpool of *Lgr5*⁺/*Dclk1*⁺ cancer stem cells. Consequently, *Elp3* or *Sox9* depletion led to similar defects in *Dclk1*⁺ cancer stem cells in ex vivo organoids. Finally, *Elp3* deficiency strongly impaired radiation-induced intestinal regeneration, in part because of decreased *Sox9* protein levels. Together, our data demonstrate the crucial role of *Elp3* in maintaining a subpopulation of *Lgr5*-derived and *Sox9*-expressing cells needed to trigger Wnt-driven tumor initiation in the intestine.

The intestinal epithelium is characterized by a repetitive architecture made of crypt–villus units and is seen as a powerful experimental model to study adult stem cells in health and diseases (Clevers, 2013; Barker, 2014). Each villus is covered by a single layer of postmitotic cells and is surrounded at its base by multiple epithelial invaginations, referred to as crypts of Lieberkühn. Each crypt–villus unit is composed of six differentiated epithelial cell types. These are lysozyme and defensin-secreting Paneth cells located at the bottom of the crypts, absorptive enterocytes, Goblet and enteroendocrine cells that secrete mucus or hormones, microfold (M) cells that play essential roles in mucosal immunity, and rare post-mitotic Tuft cells (also referred to as Brush cells) whose biological functions remain to be defined (Clevers, 2013).

Tuft cells originate from poorly characterized tuft cell progenitors, are enriched in acetylated α -tubulin, and show characteristic microtubule and actin bundles located at the

cell apex exposed to the luminal environment (Gerbe et al., 2011, 2012). They are distinct from intestinal secretory cells, as transcription factors such as *Neurog3*, *Sox9*, and *Spdef* are dispensable for their generation (Gerbe et al., 2011; Bjerknes et al., 2012). Tuft cells specifically express Doublecortin-like kinase 1 (*Dclk1*; also referred to as *Dcamkl-1*) as well as the transcription factor *Gfi1B* (Bjerknes et al., 2012; Gerbe et al., 2012). *Sox9* is also expressed in Tuft cells, but is not seen as a specific tuft cell marker because of its strong expression in Paneth cells (Bastide et al., 2007; Mori-Akiyama et al., 2007). Identifying molecular determinants for the specification and differentiation of Tuft cells is therefore critical to shed more light on their poorly understood biological functions.

The intense self-renewal kinetics of the intestinal epithelium relies on crypt base columnar (CBC) stem cells located at the bottom of intestinal crypts together with Paneth cells. Cycling CBC cells express the Wnt target gene *Leucine-rich repeat containing G protein-coupled receptor 5* (*Lgr5*; Barker et al., 2007). A second pool of quiescent stem cells has also been described in the intestine. Indeed, DNA label-retaining cells (LRCs), also referred to as +4 stem cells, are located

*A. Ladang and F. Rapino contributed equally to this paper.

**P. Close and A. Chariot contributed equally to this paper.

Correspondence to Pierre Close: pierre.close@ulg.ac.be; or Alain Chariot: alain.chariot@ulg.ac.be

Abbreviations used: CBC, Crypt base columnar; *Dclk1*, Doublecortin-like kinase 1; Hes1, Hairy/enhancer of split1; LRCs, label-retaining cells; Mcm⁵, 5-methoxycarbonylmethyl; SAM, S-adenosylmethionine.

© 2015 Ladang et al. This article is distributed under the terms of an Attribution–Noncommercial–Share Alike–No Mirror Sites license for the first six months after the publication date (see <http://www.rupress.org/terms>). After six months it is available under a Creative Commons License (Attribution–Noncommercial–Share Alike 3.0 Unported license, as described at <http://creativecommons.org/licenses/by-nc-sa/3.0/>).

above Paneth cells and express various markers such as *Bmi1*, *Hopx*, *mTERT*, and *Lrig1* (Potten et al., 1978; Sangiorgi and Capecchi, 2008; Montgomery et al., 2011; Takeda et al., 2011; Powell et al., 2012). Importantly, a high level of plasticity occurs between $Lgr5^{+}$ and LRC stem cells as *Hopx*-expressing +4 cells can generate $Lgr5^{+}$ cells, whereas the latter can also express +4 stem cell markers (Takeda et al., 2011; Muñoz et al., 2012). Similarly, $Lgr5^{+}$ cells mark a heterogeneous population as $Lgr5^{high}$ stem cells are mitotically active, whereas other $Lgr5^{low}$ progenitors exit the cell cycle (Basak et al., 2014).

Wnt signaling fuels the stem cell compartment and also critically controls tumor development in the intestine by promoting crypt proliferation through transcriptional activation of Tcf target genes (Clevers and Nusse, 2012). Although it is not totally clear how cancer stem cells are controlled by Wnt signaling, it has nevertheless been demonstrated that $Lgr5^{+}$ stem cells critically drive tumor initiation (van de Wetering et al., 2002; Barker et al., 2009; Schepers et al., 2012; Clevers, 2013). The tuft cell marker *Dclk1* also appears to distinguish cancer versus normal stem cells (Nakanishi et al., 2013). *Dclk1*⁺ cells have been demonstrated to sustain tumor growth in the intestine, but it is currently unclear how *Dclk1* expression is regulated (Westphalen et al., 2014). A better characterization of proteins acting downstream of the oncogenic Wnt signaling pathway and required for the maintenance of intestinal cancer stem cells is therefore required.

The intestine, as a proliferative and self-renewing organ, is highly sensitive to DNA-damaging agents, but regenerates when subjected to high doses of radiation. Indeed, intestinal stem cells that escaped from massive p53-mediated apoptosis undergo cell proliferation and repopulate the intestine within a few days, a process that critically relies on Wnt signaling (Withers and Elkind, 1970; Merritt et al., 1994; Ashton et al., 2010; Cordero and Sansom, 2012). The mitotically active $Lgr5^{+}$ cells, although dispensable for intestinal homeostasis, are critical for intestinal regeneration upon damage. Notably, upon caloric restriction or expression of the Wnt agonist R-spondin1, the increased number of $Lgr5^{+}$ cells promotes protection against intestinal damage (Bhanja et al., 2009; Tian et al., 2011; Yilmaz et al., 2012; Metcalfe et al., 2013; Zhou et al., 2013). Similarly, a population of quiescent LRCs, defined as Paneth cell precursors that express Paneth and +4 markers, can revert back into proliferating $Lgr5^{+}$ cells upon radiation (Buczacki et al., 2013). Another study also defined an intestinal *Dclk1*⁺ quiescent cell population required for regeneration as the genetic ablation of *Dclk1* led to defects in recovery after intestinal injury (Westphalen et al., 2014). Moreover, the transcription factor Sox9 is also critical for epithelial regeneration after high-dose irradiation highlighted (Roche et al., 2015). Still, the molecular mechanism governing stem cell plasticity during radiation-induced intestinal regeneration remains poorly characterized.

Elp3 is the catalytic subunit of Elongator (Elp1-Elp6), a protein complex initially identified as a component of a hyperphosphorylated RNA polymerase II holoenzyme isolated

from budding yeast chromatin. Elp3 sequence harbors motifs found in the GNAT family of histone acetyltransferases (HATs; Otero et al., 1999; Wittschleben et al., 1999; Kim et al., 2002) and a radical S-adenosylmethionine (SAM) domain at the N-terminal region that includes a FeS cluster critical for Elongator integrity (Greenwood et al., 2009). Elongator promotes transcriptional elongation in the nucleus through histone H3 acetylation but also, as a cytoplasmic complex, in translational efficiency by adding 5-methoxycarbonylmethyl (mcm⁵) and 5-carbamoylmethyl (ncm⁵) groups on uridines at the wobble position of some tRNAs (Kristjuhan et al., 2002; Winkler et al., 2002; Huang et al., 2005; Close et al., 2006; Esberg et al., 2006; Bauer et al., 2012; Lin et al., 2013). Elongator promotes cell migration in a variety of primary and transformed cells (Close et al., 2006, 2012; Creppe et al., 2009; Lee et al., 2009). However, it is unclear whether Elongator is involved in tumor development in vivo.

We show here that Elp3 expression is induced by Wnt signaling, promotes Tuft cell differentiation, and is essential for Wnt-driven tumor development in the intestine, as well as for radiation-induced intestinal regeneration. Mechanistically, our data support a model in which $Lgr5^{+}$ cells rely on Elp3 to initiate tumor development upon constitutive Wnt signaling at least through the maintenance of a pool of $Lgr5^{+}/Dclk1^{+}/Sox9^{+}$ cells. We show that Elp3 regulates Sox9 protein levels through tRNA modification. Therefore, we define Elp3 as a downstream effector of Wnt signaling that controls Sox9 translation and maintains a pool of $Lgr5^{+}/Dclk1^{+}/Sox9^{+}$ cells to drive tumor initiation in the intestine.

RESULTS

ELP1 and ELP3 are Wnt target genes

Elongator-deficient melanoma cells fail to form colonies in soft agar (Close et al., 2012). The anchorage-independent growth of two colon cancer-derived cell lines, HCT116 and HT29, is also strongly impaired after Elp3 depletion (unpublished data). Both HCT116 and HT29 cells harbor enhanced Wnt signaling as a result of β -catenin or APC mutations, respectively (Morin et al., 1997; Wang et al., 2003), suggesting a crucial role of Elongator in Wnt-driven tumorigenesis. As β -catenin critically drives colony formation in soft agar (Verma et al., 2003), we next investigated whether Elongator is functionally connected to Wnt- and β -catenin-dependent signaling pathways. β -catenin nuclear levels, as well as expression of described Wnt target genes, remained unchanged upon ELP3 deficiency in HT29 cells, indicating that Elongator is dispensable for Wnt signaling activation (unpublished data). We then impaired the Wnt pathway by generating β -catenin-depleted HT29 cells and noticed that ELP1 and ELP3 mRNA levels decreased upon β -catenin deficiency, similarly to other Wnt target genes, such as *Lgr5*, *Axin 2*, *Cyclin D1*, and *c-Myc* (Fig. 1 A). Conversely, Wnt activation in RKO cells, which have low intrinsic Wnt signaling, increased Elp3 protein levels (Fig. 1 B), suggesting that ELP3 expression is β -catenin-dependent in colon cancer-derived cells. The

Elp3 promoter harbors multiple TCF4-binding sites, and we detected a specific recruitment of TCF4 on two sites located 3,400 and 3,200 bp upstream from the transcription start site by ChIP assays (Fig. 1 C). To investigate whether this finding is also relevant in vivo, we assessed *Elp1* and *Elp3* mRNA levels in control versus *Apc*^{+/-min} mice, which spontaneously develop adenocarcinomas as a result of constitutive Wnt signaling (Su et al., 1992). Similarly to c-Myc, *Elp1* and *Elp3* mRNAs dramatically increased over time in intestinal epithelial cells (IECs) from *Apc*^{+/-min}, but not from control mice (Fig. 1 D). *ELP3* expression was also higher in human intestinal carcinomas than in normal adjacent tissues, similar to c-MYC (Fig. 1 E). Consistently, in human samples of colon cancer, *ELP3* protein expression was enriched in parts enclosing adenomas and carcinomas compared with normal intestinal epithelia, as shown by anti-*ELP3* immunohistochemistry analyses (Fig. 1 F). Collectively, our data indicate that *Elp3* expression is Wnt and β -catenin dependent in the intestine and is enhanced upon constitutive Wnt signaling.

***Elp3* promotes Tuft cell differentiation in the intestine**

Having defined *Elp3* as a Wnt target, we next assessed its role in intestinal homeostasis. We first generated a genetically engineered mouse model in which the exon 2 of the *Elp3* gene was flanked with LoxP sites to create the conditional knockout (KO) allele (referred hereafter to as *Elp3*^{Control}). Deletion of exon 2 upon Cre expression results in *Elp3* loss of function by generating a frameshift to all downstream exons (Fig. 2 A). The constitutive knockout alleles generated by crossing our *Elp3*^{Control} strain with the Villin-Cre mouse (referred hereafter to as *Elp3* ^{Δ IEC}) was indeed identified in IECs through PCR analysis (Fig. 2 B). As a result, *Elp3* expression was severely decreased in IECs of *Elp3* ^{Δ IEC} mice (Fig. 2, C and D). The absence of *Elp3* in IEC did not impact on the overall gain of weight of mice over lifetime (Fig. 2 E). Moreover, no obvious defect in the intestinal architecture was observed (unpublished data). The number of cycling cells in the transient amplifying compartment, as well as cell death at the top of intestinal villi were intact upon *Elp3* deficiency, as judged by Ki67 and cleaved Caspase 3 staining performed in 4-month-old control or *Elp3* ^{Δ IEC} mice (unpublished data). Moreover, mRNA levels of markers of CBC cells *Olfm4*, *Lgr5*, and *Achaete Scute-like 2* (*Ascl2*; van der Flier et al., 2009) remained unchanged (unpublished data). Quiescent, Paneth, and Goblet cell markers were also properly expressed upon *Elp3* deficiency, as were *Atonal* homologue 1 (*Atoh1*) and hairy/enhancer of split 1 (*Hes1*), which control the balance between secretory or absorptive lineages (Jensen et al., 2000; Yang et al., 2001; and unpublished data). Of note, mRNA levels of Chromogranin A, an enteroendocrine cell marker, slightly decreased upon *Elp3* deficiency (unpublished data). Surprisingly, all tested markers of Tuft cell, namely *Dclk1*, *Cox1*, and *Gfi1B* (Gerbe et al., 2011, 2012; Bjerknes et al., 2012), were decreased in their mRNA levels upon *Elp3* deficiency (Fig. 2 F). As a consequence, intestinal *Dclk1* pro-

tein levels were strikingly reduced (Fig. 2 G). The number of *Dclk1*⁺ cells actually decreased in *Elp3*-deficient intestinal crypts, as judged by IHC analyses (Fig. 2 H), suggesting that *Elp3* is critical for Tuft cell differentiation. IF analyses further showed that the number of Tuft cells, defined as *Dclk1*⁺/acetylated α -tubulin⁺ cells (Saqui-Salces et al., 2011), was significantly lower upon *Elp3* deficiency in intestinal epithelia (Fig. 2 I). Thus, *Elp3* specifically promotes the differentiation of Tuft cells in healthy crypts but does not affect the overall homeostasis of the intestine.

Wnt-driven tumor initiation requires *Elp3*

Because *Elp3* is required for colony formation in colon cancer cells showing constitutive Wnt signaling, and because Wnt signaling promotes *Elp3* expression in the intestine, we next explored the putative role of *Elp3* in Wnt-driven intestinal tumor development by crossing *Elp3*^{Control} or *Elp3* ^{Δ IEC} mice with the *Apc*^{+/-min} strain. As expected, *Elp3* expression was severely impaired in intestinal crypts of the resulting mouse model (*Apc*^{+/-min} *Elp3* ^{Δ IEC}), as confirmed by real-time PCR analysis (Fig. 3 A). Strikingly, *Elp3* deficiency in *Apc*^{+/-min} mice dramatically extended their life span due to a severe decrease in tumor number in proximal, middle, and distal intestines (Fig. 3, B–E). Splenomegaly, a typical feature of *Apc*^{+/-min} mice (Lane et al., 2010), did not occur upon *Elp3* deficiency, as spleen weight of *Apc*^{+/-min} *Elp3* ^{Δ IEC} mice were almost identical to those seen in *Elp3*^{Control} or in *Elp3* ^{Δ IEC} mice (Fig. 3, F and G). Moreover, decreased hematocrit levels, another feature of *Apc*^{+/-min} mice, was not observed upon *Elp3* deficiency (Fig. 3 H). Additionally, *Elp3* deletion strongly impaired spheroid structure formation from ex vivo culture of *Apc*-mutated intestinal crypts (Fig. 3 I). Together, these data demonstrate that *Elp3* promotes Wnt-driven tumor initiation in the intestine.

***Lgr5*⁺ cells require *Elp3* to promote Wnt-dependent tumor initiation in the intestine**

Given the critical role of *Lgr5*⁺ cells in tumor initiation (Barker et al., 2009; Schepers et al., 2012), we next wondered whether the genetic inactivation of *Elp3* in *Lgr5*⁺ cells would also impact on Wnt-driven tumor initiation. To address this issue, we first crossed the stem cell-specific *Lgr5-EGFP-IRES-creER*^{T2} knock-in mouse with our *Elp3*^{lox/lox} strain and subsequently deleted *Elp3* in the resulting mice through tamoxifen administration (referred to as *Lgr5-EGFP-Elp3* ^{Δ CBC}). Tamoxifen was also administered in the *Lgr5-EGFP-IRES-creER*^{T2} strain as control (referred to as *Lgr5-EGFP-Elp3*^{Control}). Notably, *Elp3* expression was enriched in cycling *Lgr5*⁺ (*EGFP*⁺) cells, which provides an additional demonstration for Wnt signaling acting as a driver of *Elp3* expression (unpublished data). Impaired *Elp3* expression was specifically observed in sorted *EGFP*⁺ cells upon tamoxifen injection (unpublished data). Importantly, *Elp3* deficiency did not impact on the number of *Lgr5*⁺ cells (unpublished data). Therefore, *Elp3* is dispensable for the maintenance of *Lgr5*⁺ stem cells in healthy crypts.

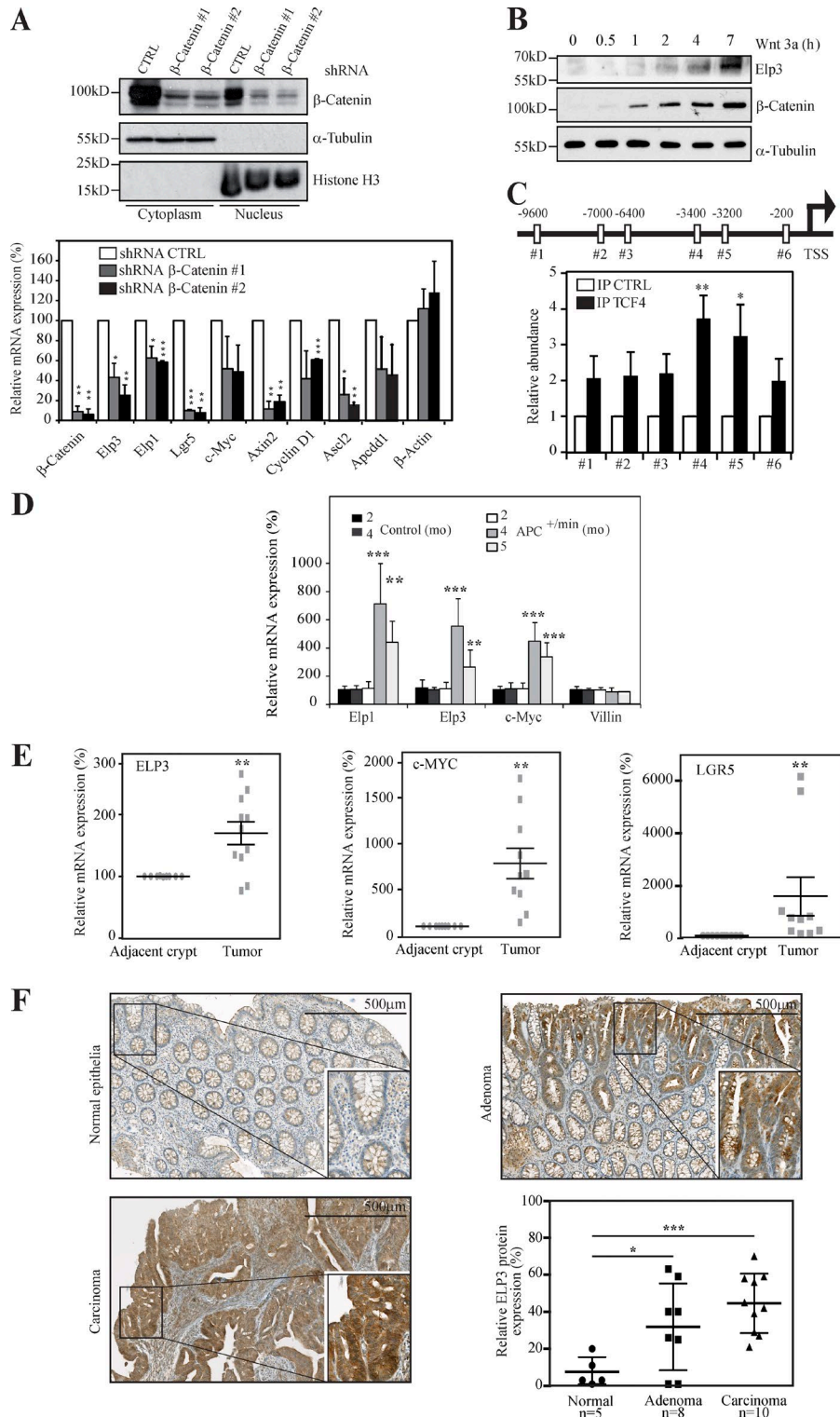


Figure 1. Wnt signaling induces ELP3 expression. (A) HT29 cells were infected with the indicated lentiviral constructs and protein extracts from the resulting cells were subjected to Western blot (WB) analyses. α-tubulin and Histone H3 are used as controls for the cytoplasmic and nuclear fractions, respectively (top). At the bottom, control (shRNA CTRL) or β-catenin-depleted HT29 cells (shRNA β-Catenin #1 or #2) were subjected to quantitative real-time PCR analysis to monitor Wnt target genes, as well as ELP1 and ELP3 mRNA levels. Data from three independent experiments (mean values ± SD; Student's *t* test; *, *P* < 0.05; **, *P* < 0.01; ***, *P* < 0.001) are shown. (B) Anti-ELP3, β-Catenin, and α-tubulin WB analyses with whole-cell lysates from RKO cells treated or not with Wnt 3a (100 ng/ml) for the indicated periods of time were performed. (C) TCF4-binding sites were identified on the *Elp3* promoter (positions relative to the transcription start site are indicated). ChIP assays were conducted using extracts from HT29 cells and an anti-TCF4 or a nonrelevant (CTRL) antibody. Associated DNA was analyzed by quantitative real-time PCR using primers spanning the indicated TCF4-binding sites. Signals are expressed as IP/Input ratio for each primer pair normalized to control. Data from three experiments performed in triplicate are shown (mean values ± SD; Student's *t* test; *, *P* < 0.05; **, *P* < 0.01). (D) Total mRNAs from IEC of control or *Apc*^{+/-} mice were subjected to quantitative real-time PCR analysis to assess *Elp3* and *Elp1* expression. Abundance of Villin transcripts was used as control. Error bars denote SD. (**, *P* < 0.01; ***, *P* < 0.001; Mann-Whitney test; *n* ≥ 5). (E) Total mRNAs from nine intestinal carcinomas or from adjacent normal tissues were subjected to quantitative real-time PCR to assess ELP3, MYC, and LGR5 levels. The figure shows the mRNA expression levels of all transcripts in adenomas relative to their levels in normal adjacent tissues after normalization with β-2 microglobulin. (*n* = 9; **, *P* < 0.01; Wilcoxon-matched paired test). (F) Anti-ELP3 immunohistochemistry (IHC) was conducted in human cases of intestinal malignancies, as well as in normal intestinal epithelia. Representative images are shown. The average *Elp3*-specific signal has been quantified and plotted (mean values ± SD; Student's *t* test; *, *P* < 0.05; ***, *P* < 0.001).

We next crossed the *Apc*^{lox/lox} strain with the *Lgr5-EGFP-IRES-creER*^{T2} knock-in mouse and with our *Elp3*^{lox/lox} strain. Both *Apc* and *Elp3* were simultaneously inactivated in *Lgr5*⁺ cells of the resulting mouse through tamoxifen administration (referred to as *Apc*^{ΔCBC} *Elp3*^{ΔCBC}). Tamoxifen

was also administered in mice resulting from the breeding of *Apc*^{lox/lox} mice with the *Lgr5-EGFP-IRES-creER*^{T2} strain (referred to as *Apc*^{ΔCBC}). As expected, numerous hyperplasias that resulted from constitutive Wnt signaling in *Lgr5*⁺ cells were observed 15 d after tamoxifen administration in

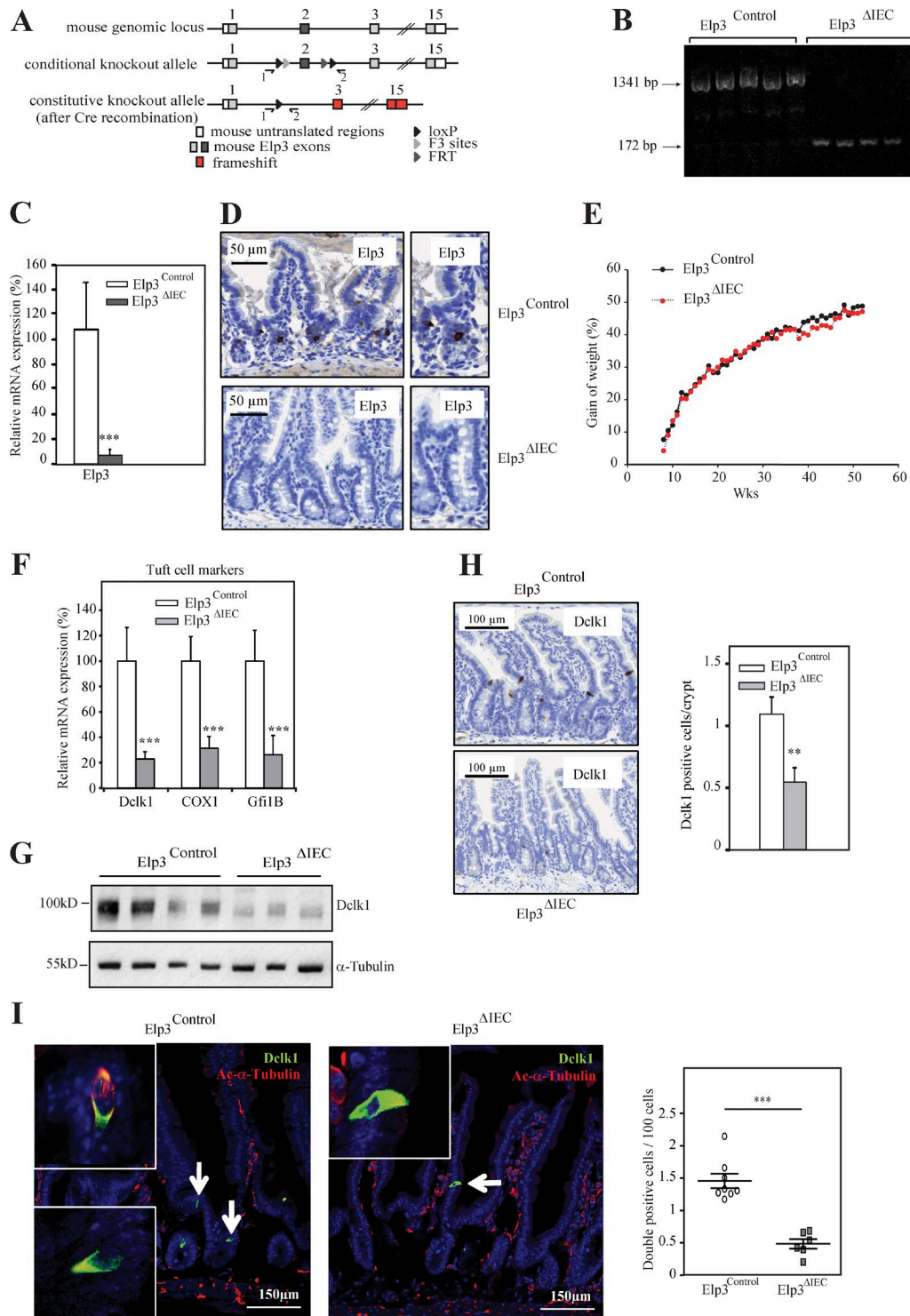


Figure 2. *Elp3* promotes Tuft cell differentiation. (A) LoxP sites flanking exon 2 of the *Elp3* gene were inserted. Deletion of exon 2 upon Cre expression results in loss of function of *Elp3* by generating a frameshift to all downstream exons (red boxes). Primers used for detection of the wild-type or mutated alleles are depicted by arrows. (B) Genomic DNA was extracted from IECs of *Elp3*^{lox/lox} (*Elp3*^{Control}) or *Elp3*^{lox/lox} Villin^{Cre/+} (*Elp3* ^{Δ IEC}) mice and subjected to PCR analysis using primers 1 and 2 to amplify the wild-type or recombinant allele (1,341- or 172-bp fragments, respectively). (C) mRNAs from *Elp3*^{Control} and *Elp3* ^{Δ IEC} mice were subjected to quantitative real-time PCR analysis to assess *Elp3* mRNA levels (mean values \pm SD; Student's *t* test; ***, *P* < 0.001). (D) Anti-*Elp3* IHC analyses were performed with intestinal crypts from 120-d-old *Elp3*^{Control} and *Elp3* ^{Δ IEC} mice. (E) The weight of five male *Elp3*^{Control} and *Elp3* ^{Δ IEC} mice (8–55 wk old) was quantified and plotted. Weights were normalized at 8 wk of age for each genotype. (F) Intestinal epithelial cells (IECs) were

$Apc^{\Delta CBC}$ mice, as demonstrated by H&E and Ki67 IHC analyses (Fig. 4, A and B). Those areas of hyperplasia also showed elevated numbers of $Dcl1^{+}$ cells (Fig. 4 C). *Elp3* deficiency in $Lgr5^{+}$ and *Apc*-deleted cells did not impact the total number of $Lgr5^{+}$ cells, but severely impaired tumor initiation, as judged by decreased numbers of hyperplastic foci (not depicted and Fig. 4, A and B, respectively). The number of $Dcl1^{+}$ cells was also decreased in the rare *Elp3*-deficient hyperplastic foci (Fig. 4 C). Importantly, $Dcl1^{+}$ cells found in these hyperplastic foci were largely negative for acetylated- α -tubulin staining, as compared with adjacent crypts, which supports the notion that they are not Tuft cells (unpublished data). Therefore, *Elp3* expression in $Lgr5^{+}$ cells is required for Wnt-dependent intestinal tumor initiation. Intestinal crypts extracted from $Apc^{\Delta CBC}$ $Elp3^{\Delta CBC}$ mice also failed to efficiently generate spheroid structures ex vivo (Fig. 4 D). To further demonstrate that *Elp3* expression is required for the self-renewal capacity of $Lgr5^{+}$ cancer stem cells, FACS-sorted $Lgr5^{+}$ cells from both $Apc^{\Delta CBC}$ and $Apc^{\Delta CBC}$ $Elp3^{\Delta CBC}$ mice were subjected to an in vitro limiting dilution assay. *Elp3* ablation strongly affected the $Lgr5^{+}$ cells cancer stem cell potential (Fig. 4 E). Therefore, the cancer stem cell potential of $Lgr5^{+}$ cells relies on *Elp3* in the intestine.

Elp3 maintains the pool of $Dcl1^{+}$ cells in the intestine

We next explored the mechanisms underlying the role of *Elp3* in Wnt-driven intestinal tumor initiation. Nuclear β -catenin protein levels, as well as mRNA levels of Wnt target genes, such as c-Myc, EphB2, and Tcf-1, were unchanged in 4-month-old $Apc^{+/min}$ $Elp3^{\Delta IEC}$ mice (unpublished data) as compared with $Apc^{+/min}$ $Elp3^{Control}$ mice. Moreover, crypt cell proliferation and cell apoptosis at the top of the villi remained unchanged upon *Elp3* deficiency in $Apc^{+/min}$ mice (unpublished data), as were the number of goblet cells, apical enterocytes, Paneth, and enteroendocrine cells (unpublished data). Of note, *Atoh1* and *Hes1* mRNA levels were also unchanged in *Elp3*-deficient $Apc^{+/min}$ mice, as were several markers of cell differentiation, namely *Krt20*, *Anpep*, and *Prss7* (unpublished data). In agreement with a dispensable role of *Elp3* in the maintenance of $Lgr5^{+}$ cells in $Apc^{\Delta CBC}$ mice, *Lgr5*, but also *Ascl2*, mRNA levels did not change upon *Elp3* deficiency in intestinal tumors of $Apc^{+/min}$ mice (Fig. 5 A). Interestingly, in line with the fact that $Dcl1^{+}$ cells in tumors are distinct from tuft cells, both *Dcl1* and *Gfi1B*, but not *COX1*, were decreased at the mRNA level upon *Elp3* deficiency in the $Apc^{+/min}$ tumors (Fig. 5 B). *Dcl1*, whose protein levels were

higher in cystic lesions than in adenocarcinomas (Fig. 5 C), was also less expressed in IECs extracted from $Apc^{+/min}$ $Elp3^{\Delta IEC}$ mice, as shown by IHC and WB analyses (Fig. 5, D and E). Consistently, the number of $Dcl1^{+}$ cells in both tumors and adjacent regions significantly decreased in the intestine of $Apc^{+/min}$ $Elp3^{\Delta IEC}$ mice (Fig. 5 F). Importantly, although the number of Tuft cells ($Dcl1^{+}$ and acetylated α -tubulin $^{+}$ cells) slightly decreased, the number of $Dcl1^{+}$ /acetylated α -tubulin $^{-}$ cells dramatically decreased in $Apc^{+/min}$ $Elp3^{\Delta IEC}$ mice (Fig. 5 G). Importantly, the depletion of *Dcl1* in ex vivo organoid cultures with intestinal crypts extracted from $Apc^{\Delta CBC}$ mice did not impact on *Elp3* expression, but interfered with the generation of spheroid structures, similar to *Elp3* deficiency (Fig. 5 H). Therefore, *Elp3* promotes Wnt-driven tumor initiation in the intestine, at least by maintaining the pool of $Dcl1^{+}$ cells.

Elp3 promotes Sox9 expression through tRNA modifications

Constitutive Wnt signaling induces significant changes in gene and protein expression to promote tumor development (Sansom et al., 2007). Sox9 is required downstream of Wnt/ β -catenin signaling for the long term self-renewal of oncogene-expressing cells in a genetic mouse model of basal cell carcinoma (Larsimont et al., 2015). Moreover, Sox9 is expressed in intestinal crypts as a Wnt target gene and is consequently overexpressed upon constitutive Wnt signaling (Blache et al., 2004). Therefore, we hypothesized that the blockage of Wnt-driven tumor development upon *Elp3* deficiency may be due, at least in part, to a defective Sox9 expression. As expected, Sox9 levels were robustly increased in $Apc^{+/min}$ intestinal crypts as a result of constitutive Wnt signaling (Fig. 6 A). Importantly, its expression was severely decreased in $Apc^{+/min}$ $Elp3^{\Delta IEC}$ mice to reach similar levels as in normal intestinal crypts (Fig. 6 A). Consistently, Sox9 protein levels dramatically decreased in $Apc^{+/min}$ $Elp3^{\Delta IEC}$ versus $Apc^{+/min}$ $Elp3^{Control}$ mice (Fig. 6 B). *Igfbp4*, a stem cell marker whose expression is Sox9-dependent in the intestine (Merlos-Suárez et al., 2011; Shi et al., 2013), was consequently less expressed upon *Elp3* deficiency in intestinal crypts from $Apc^{+/min}$ mice (Fig. 6 C). Thus, *Elp3* is critical for the expression of Sox9 seen upon *Apc* loss. This conclusion was further supported by the fact that although Wnt 3a increased *ELP3* and *SOX9* expression, both at the mRNA and protein levels through β -catenin stabilization in control RKO cells, it failed to induce *SOX9* protein expression upon *ELP3* deficiency (Fig. 6 D and not depicted). Importantly, the number of ex

isolated from 120-d-old $Elp3^{Control}$ and $Elp3^{\Delta IEC}$ mice, and the resulting total mRNAs were subjected to quantitative real-time PCR analysis to assess mRNA levels of the indicated candidates (mean values \pm SD; Student's *t* test; ***, $P < 0.001$; $n = 6$). (G) Anti-*Dcl1* and α -tubulin (loading control) WBs were performed on cell extracts from IECs of $Elp3^{Control}$ and $Elp3^{\Delta IEC}$ 120-d-old mice. (H; left) Anti-*Dcl1* IHC in intestinal crypts from the indicated genotypes. (right) Quantification of *Dcl1*-positive cells per crypt showing significant decrease of *Dcl1* upon *Elp3* deficiency in the intestine (mean values \pm SD; Student's *t* test; **, $P < 0.01$; $n = 4$). (I) Anti-*Dcl1* and acetylated α -tubulin immunofluorescence (IF) analyses were performed to visualize Tuft cells in $Elp3^{Control}$ and $Elp3^{\Delta IEC}$ mice, as indicated. The graph represents the quantification of the *Dcl1*/acetylated- α -tubulin double-positive cells in both genotypes (mean values \pm SD; Student's *t* test; ***, $P < 0.001$).

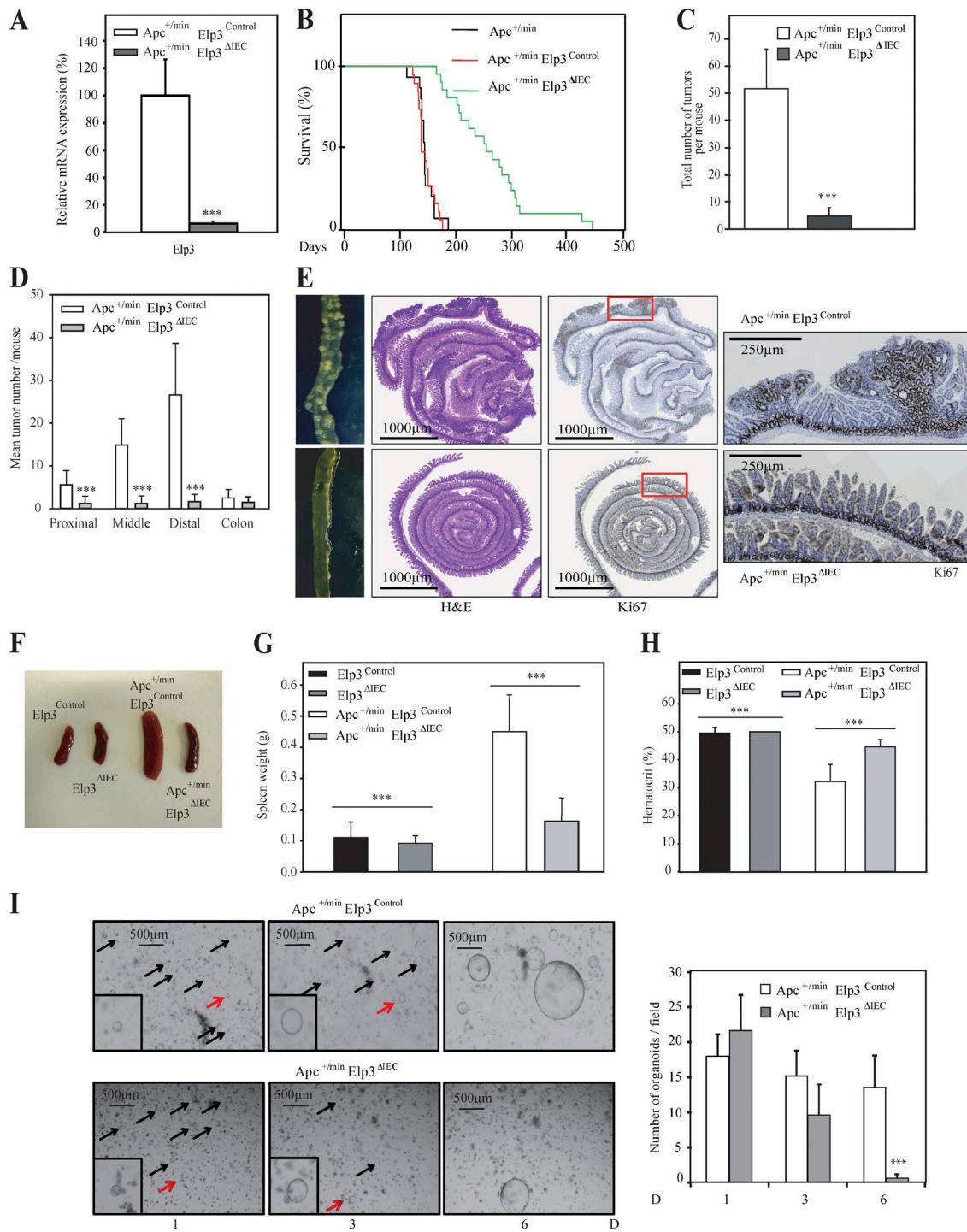


Figure 3. *Elp3* is required for tumor development in a mouse model of colon cancer. (A) IECs were isolated from *Apc*^{+/-}*Elp3*^{Control} and *Apc*^{+/-}*Elp3*^{ΔIEC} 120-d-old mice and the resulting total mRNAs were subjected to quantitative real-time PCR analysis to assess *Elp3* mRNA levels (mean values ± SD; Student's *t* test; ***, *P* < 0.001; *n* = 4). (B) A Kaplan-Meier curve (*P* < 0.001; *n* ≥ 16) was established with the indicated genotypes. (C and D) The histograms show the total number of adenomas in the entire intestine (C) or in the indicated areas (D) of 120-d-old control (*Apc*^{+/-}*Elp3*^{Control}) and *Elp3*-deficient mice (*Apc*^{+/-}*Elp3*^{ΔIEC}; mean values ± SD; Student's *t* test; ***, *P* < 0.001; *n* ≥ 11). (E) Representative pictures of jejunal section of 120-d-old *Apc*^{+/-}*Elp3*^{Control} and *Apc*^{+/-}*Elp3*^{ΔIEC} mice. H&E and K67 staining are also illustrated. (F) Representative pictures of the spleen from the indicated genotypes. (G) Quantification of the spleen weight of 120-d-old mice from the indicated genotypes (mean values ± SD; Student's *t* test; ***, *P* < 0.001; *n* ≥ 7). (H) Hematocrit levels in the indicated genotypes of 3-mo-old mice (*Elp3*^{Control}, *n* = 4; *Apc*^{+/-}*Elp3*^{Control}, *n* = 9; *Elp3*^{ΔIEC}, *n* = 3) and *Apc*^{+/-}*Elp3*^{ΔIEC} (*n* = 9) was assessed and plotted (mean

vivo spheroid structures generated from $Apc^{\Delta CBC}$ mice similarly decreased upon Sox9 or Elp3 depletion, suggesting that Elp3 promotes intestinal Wnt-driven tumor initiation at least by promoting Sox9 expression (Fig. 6 E).

Intriguingly, Sox9 mRNA levels remained unchanged upon *Elp3* deficiency in the $Apc^{+/min}$ model, as shown by quantitative real-time PCR and in situ hybridization (Fig. 6 C and not depicted, respectively). Moreover, Sox9 transcription was properly induced upon Wnt 3a stimulation in RKO cells (unpublished data), suggesting that Elp3 regulates Sox9 expression at the posttranscriptional level. Of note, mRNA levels of various proteins known to regulate the acetylation or sumoylation of Sox9 (Tip60, Ubc9, Pias1, Pias4, and Senp2, respectively; Hattori et al., 2006, 2008) were properly expressed upon *Elp3* deficiency in $Apc^{+/min}$ mice (unpublished data), suggesting that Sox9 post-translational modifications known to interfere with its stability are not responsible for the decreased protein levels seen upon *Elp3* deficiency. In yeast, Elp3 promotes translational efficiency through tRNA modification (Huang et al., 2005). To understand if Sox9 decrease upon *Elp3* deficiency is due to translational defects, we expressed a Sox9 cDNA in wild-type and *elp3*-deleted fission yeast cells (Fig. 6 F). Strikingly, the absence of Elp3 impeded Sox9 expression, which was restored upon overexpression of the unmodified tRNA^{lys}^{UUU}, a critical target of Elongator. As Elp3 promotes the translation of AAA-enriched polypeptides in yeast (Bauer et al., 2012), we next generated a Sox9 expression construct in which all three AAA codons (K167, 242, and 249) found in the Sox9 murin sequence were mutated into their cognate Elp3-insensitive AAG codons (Sox9 Δ AAA). We then assessed Sox9 Δ AAA expression in control versus Elp3 mutant yeast strain. Interestingly, Sox9 Δ AAA but not wild-type Sox9 was properly expressed in yeast Elp3 mutant strain (Fig. 6 G). Therefore, Elp3-mediated tRNA modification is critical for Sox9 proper translation.

Elp3 expression is required to maintain a pool of Lgr5⁺/Dclk1⁺/Sox9⁺ cells in the intestine

To better understand how the Elp3-dependent translation of Sox9 expression impacts on the number of Dclk1⁺ cells, we assessed Elp3, Sox9 and Dclk1 levels in ex vivo organoid cultures generated from $Apc^{\Delta CBC}$ mice and depleted for Elp3 or Sox9. As expected, Elp3 deficiency decreased both Dclk1 and Sox9 protein levels (Fig. 7 A). In agreement with our previous data, Sox9 mRNA levels did not decrease in Elp3-depleted organoids (unpublished data). Yet, both Dclk1 and Gfi1B, but not Cox1, mRNA levels were decreased upon Elp3 depletion, supporting the notion that Elp3 controls the maintenance of a subpopulation of Dclk1⁺ cells which differ from Tuft cells upon constitutive Wnt activation (Fig. 7 A).

Importantly, Sox9 depletion in ex vivo organoids also largely decreased Dclk1 mRNA and protein levels, suggesting that a pool of Dclk1⁺ cells relies on both Sox9 and Elp3 expression for its maintenance. Finally, Dclk1 depletion in $Apc^{+/min}$ ex vivo organoids, did not affect Sox9 or Elp3 mRNA and protein levels, but decreased the number of spheroid structures as seen for Sox9 or Elp3 depletion (Fig. 5 H), strengthening the notion that both Elp3 and Sox9 are required to maintain Dclk1⁺ cells.

Having established a link between Sox9 expression and Dclk1⁺ cells, we next explored whether a Dclk1⁺/Sox9⁺ cell population can be detected in Lgr5-expressing cells and if so, whether Elp3 plays any role in its maintenance. Lgr5⁺/Dclk1⁺/Sox9⁺ cells were indeed identified by IF in ex vivo organoids from $Apc^{\Delta CBC}$ mice (Fig. 7 B). To address the role of Elp3 in their maintenance, we sorted EGFP-Lgr5⁺ cells from single-cell suspension of digested organoids generated from $Apc^{\Delta CBC}$ or $Apc^{\Delta CBC}$ Elp3 ΔCBC mice by FACS analysis (unpublished data). Although Lgr5⁺ cell number did not change upon *Elp3* deficiency, the amount of Dclk1⁺/Sox9⁺ cells in the Lgr5⁺ population strongly decreased upon *Elp3* deficiency in ex vivo organoids from $Apc^{\Delta CBC}$ mice (unpublished data and Fig. 7 C, respectively). Therefore, Elp3 promotes Wnt-driven tumor initiation, at least in part, by maintaining the pool of Lgr5⁺/Dclk1⁺/Sox9⁺ cells in the intestine.

Intestinal crypt regeneration upon irradiation requires Elp3

Because Wnt signaling critically promotes intestinal regeneration upon DNA damage (Ashton et al., 2010), and because Dclk1 expression has been shown to be required for survival after radiation injury (May et al., 2014), we next explored whether *Elp3* deficiency had any consequence on radiation-induced intestinal regeneration. Elp3^{Control} or Elp3 ^{Δ IEC} mice were subjected to 14Gy irradiation and cell proliferation was assessed in intestinal crypts. The number of regenerating crypts dramatically decreased upon *Elp3* deficiency, as assessed by Ki67 staining performed 3 d after irradiation (Fig. 8 A). Sox9 protein, but not mRNA, levels severely decreased upon *Elp3* deficiency in regenerating crypts from irradiated mice (Fig. 8 B). Importantly, mRNA and protein levels of Dclk1 were also dramatically impaired in IECs of irradiated *Elp3*-deficient mice (Fig. 8 C). To further explore whether Elp3 promotes radiation-induced intestinal regeneration through Sox9 expression, we expressed the Elp3 insensitive Sox9 Δ AAA mutant into control or Elp3-deficient RKO cells and assessed cell proliferation post-irradiation (Fig. 8 D). Importantly, Elp3-deficient RKO cells in which Sox9 expression was expectedly defective failed to efficiently proliferate post-irradiation. On the other hand, Elp3-deficient RKO cells in which the Sox9 Δ AAA mutant was ectopically ex-

values \pm SD; Student's *t* test; ***, *P* < 0.001). (I) Representative pictures of ex vivo organoid cultures using intestinal crypts from 120-d-old $Apc^{+/min}$ Elp3^{Control} and $Apc^{+/min}$ Elp3 ^{Δ IEC} mice are shown (left). Quantification of the total number of spheroid structures per well for each genotype is illustrated (mean values \pm SD; Student's *t* test; ***, *P* < 0.001). Red and black arrows depict cells that will give rise to spheroid structures or not, respectively.

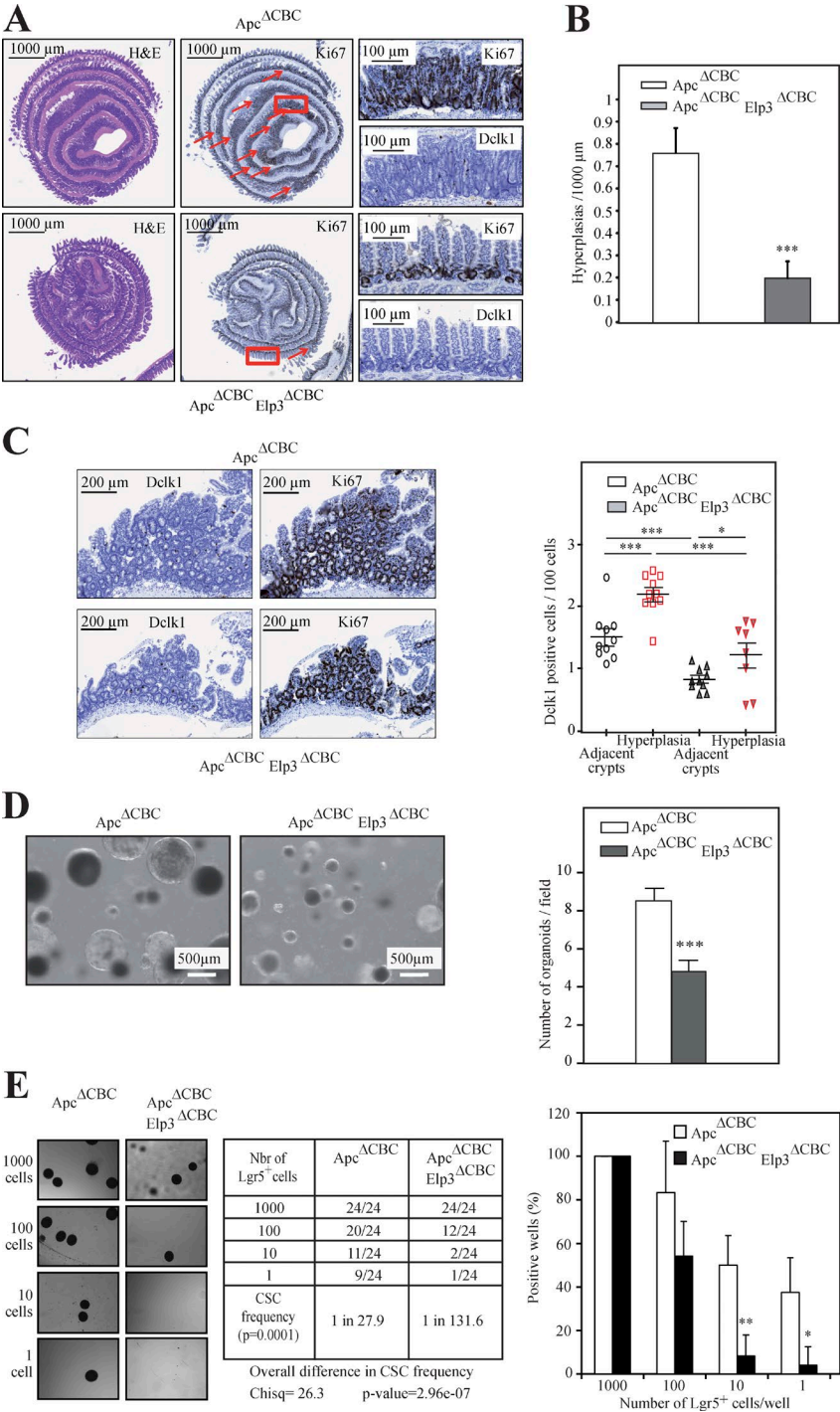


Figure 4. *Elp3* deficiency in *Lgr5*⁺ cells impairs Wnt-driven tumor initiation. (A) *Apc*^{ΔCBC} and *Apc*^{ΔCBC} *Elp3*^{ΔCBC} mice were intraperitoneally injected with tamoxifen and intestinal crypts, isolated 15 d later, and then subjected to H&E, anti-Ki67, and anti-Dclk1 IHCs, as indicated. Arrows highlight hyperplasias. (B) Quantification of the number of hyperplasias/1,000 μm in each genotype is illustrated (mean values ± SD; Student's *t* test; ***, *P* < 0.001; *n* = 4). (C) The number of Dclk1⁺ cells per 100 cells in healthy areas and in hyperplasias was quantified for both genotypes (mean values ± SD; Student's *t* test; *, *P* < 0.05; ***, *P* < 0.001; *n* = 10; right). Representative Dclk1 and Ki67 IHC analyses from the indicated genotypes are illustrated (left). (D) Representative pictures of ex vivo organoid cultures using intestinal crypts from *Apc*^{ΔCBC} and *Apc*^{ΔCBC} *Elp3*^{ΔCBC} mice are shown. Quantification of the number of spheroid structures per field (mean values ± SD; Student's *t* test; ***, *P* < 0.001). (E) *Lgr5*⁺ cells FACS-sorted from *Apc*^{ΔCBC} or *Apc*^{ΔCBC} *Elp3*^{ΔCBC} mice (*n* = 4), 15 d after tamoxifen administration were serially diluted to generate ex vivo spheroid structures (*n* = 4). 7 d after seeding, the number of wells containing spheroid structures was quantified. The cancer stem cell (CSC) potential was calculated for both genotypes, using the ELDA software (see Materials and methods for details; Chisq = χ^2 test). (right) Graph showing the percentage of positive wells per genotype normalized on 1,000-cell dilution conditions (mean values ± SD; Student's *t* test; *, *P* < 0.05; **, *P* < 0.01). (left) A summary table of organoid-positive wells (absolute numbers) in all experimental conditions is shown with representative images of spheroid structures.

pressed proliferated similarly to control RKO cells and showed normalized levels of Dclk1 (Fig. 8 D). Collectively, our data demonstrate that *Elp3* mediates regeneration after irradiation by maintaining Sox9 expression.

DISCUSSION

We defined here *Elp3* as a target of Wnt signaling dispensable for intestinal homeostasis but essential for Tuft cell differentiation,

Wnt-driven tumor initiation, and radiation-induced regeneration in the intestine. Although nuclear levels of β -catenin and constitutive Wnt-dependent gene transcription do not require *Elp3* in the intestine, our data demonstrate that the translation of Sox9, a protein induced by Wnt, is controlled by *Elp3* to maintain a pool of *Lgr5*⁺/*Dclk1*⁺/*Sox9*⁺ cancer stem cells.

Tuft cells derive from *Lgr5*⁺ crypt columnar stem cells but their differentiation and biological roles remain poorly

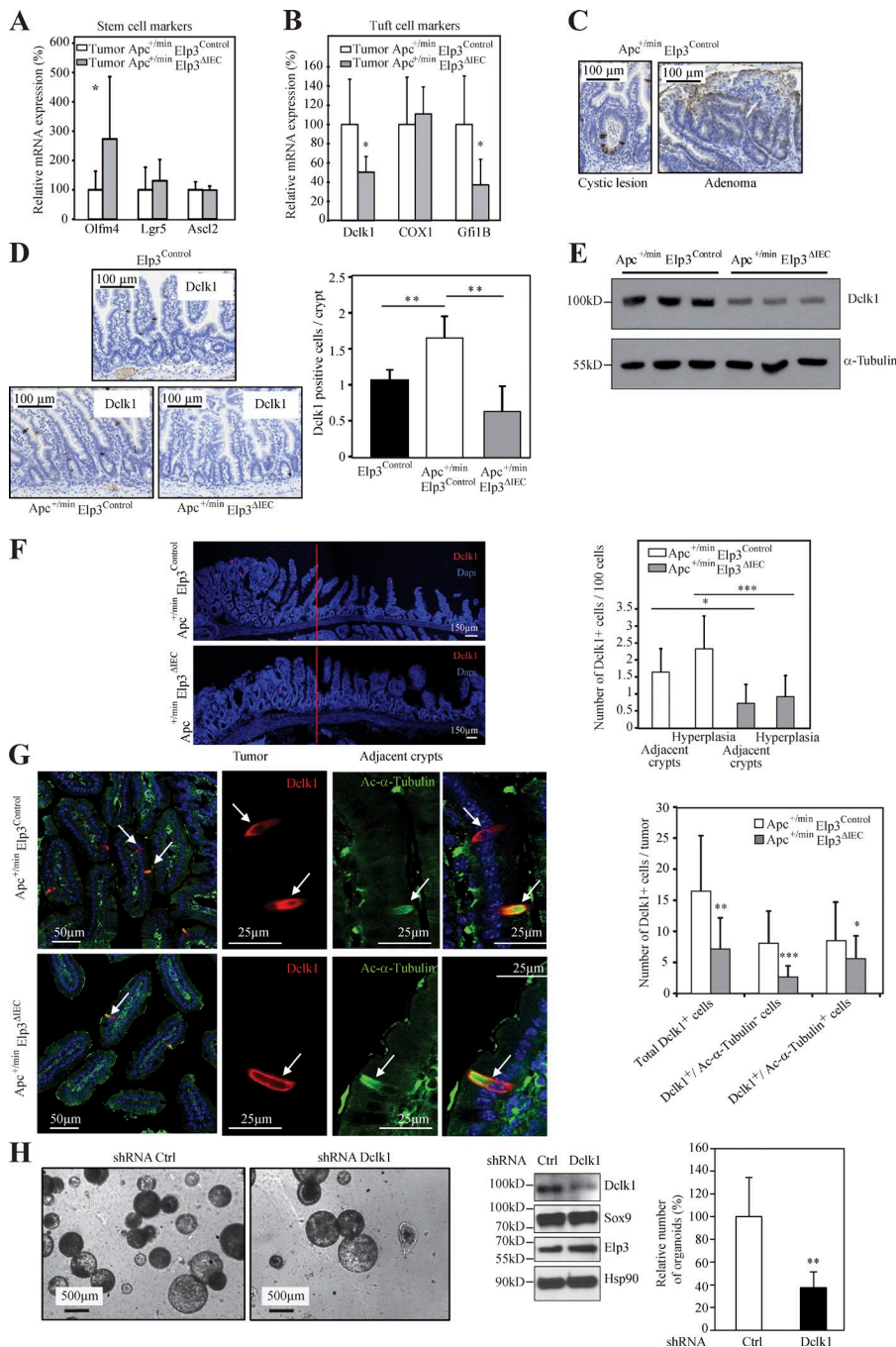


Figure 5. *Elp3* deficiency in intestinal epithelial cells of *Apc*^{+/-} mice impairs *Dclk1* expression. (A and B) Tumors were isolated from 120-d-old *Apc*^{+/-}*Elp3*^{Control} and *Apc*^{+/-}*Elp3*^{ΔIEC} mice and the resulting total mRNAs were subjected to quantitative real-time PCR analysis to assess mRNA levels of the indicated candidates. Tumors efficiently recombined for *Elp3* were selected. The mean value of mRNA levels in *Apc*^{+/-}*Elp3*^{Control} of each candidate was set to 100% and *Apc*^{+/-}*Elp3*^{ΔIEC} were expressed relative to that after normalization with GAPDH (mean values ± SD; Student's *t* test; *, *P* < 0.05; *n* ≥ 4). (C) *Dclk1* protein expression was assessed by IHC in intestinal cystic lesions and adenomas of 120-d-old *Apc*^{+/-} mice. (D) Anti-*Dclk1* IHC analyses were conducted with intestinal crypts of 120-d-old *Apc*^{+/-}*Elp3*^{Control} and *Apc*^{+/-}*Elp3*^{ΔIEC} mice. The number of *Dclk1*⁺ cells per intestinal crypt was quantified in each indicated genotype (mean values ± SD; Student's *t* test; **, *P* < 0.01; *n* = 5). (E) Protein extracts from IECs of 120-d-old mice of the indicated genotypes were subjected to anti-*Dclk1* and α-tubulin (loading control) WB analysis. (F) The number of *Dclk1*⁺ cells per 100 cells was quantified in the intestine from the indicated genotypes (mean values ± SD; Student's *t* test; *, *P* < 0.05; **, *P* < 0.01; ***, *P* < 0.001; *n* ≥ 4). (G) Anti-*Dclk1* and acetylated α-tubulin IF analyses were performed to distinguish and quantify Tuft cells versus *Dclk1*⁺ cancer stem cells in *Apc*^{+/-}*Elp3*^{Control} and *Apc*^{+/-}*Elp3*^{ΔIEC} mice (mean values ± SD; Student's *t* test; *, *P* < 0.05; **, *P* < 0.01; ***, *P* < 0.001; *n* ≥ 10 tumors). (H) *Apc*^{ΔCBC} organoids were infected with the indicated shRNA construct and their growth was assessed. Western blot analyses carried out with extracts from the resulting organoids are illustrated. The number of organoids per well was quantified. The histogram shows the data from three different mice (mean values ± SD; Student's *t* test; **, *P* < 0.01).

understood (Gerbe et al., 2011; Bjerknes et al., 2012). We found here that *Elp3* is critical for Tuft cell differentiation, as its absence leads to dramatic reduction of *Dclk1*⁺ Tuft cells in the intestinal epithelium. The reduction of differentiated Tuft cells in *Elp3*-deficient mice did not lead to any detectable functional defect or to significant change in intestinal architecture, indicating that Tuft cells are dispensable for global intestinal homeostasis. Mechanistically, it is unclear how *Elp3* promotes Tuft cell differentiation. Levels of the *Atoh1*/*Math1* transcription factor, which appear to be critical for secretory

cell lineage commitment and for Tuft cell differentiation, are normally expressed in *Elp3*-deficient intestinal crypts (Shroyer et al., 2007; Gerbe et al., 2011). Therefore, *Elp3* expression may control a late step of the epithelial cell lineage commitment. A gene network between *Atoh1*, *Hes1*, and *Gfi1B* was previously demonstrated to be critical for epithelial lineage commitment in the intestine (Bjerknes et al., 2012). High concentrations of *Gfi1B* in daughter cells of short-lived progenitors commit them to Tuft cell differentiation. Our data support this model, as *Gfi1B* mRNA levels are severely

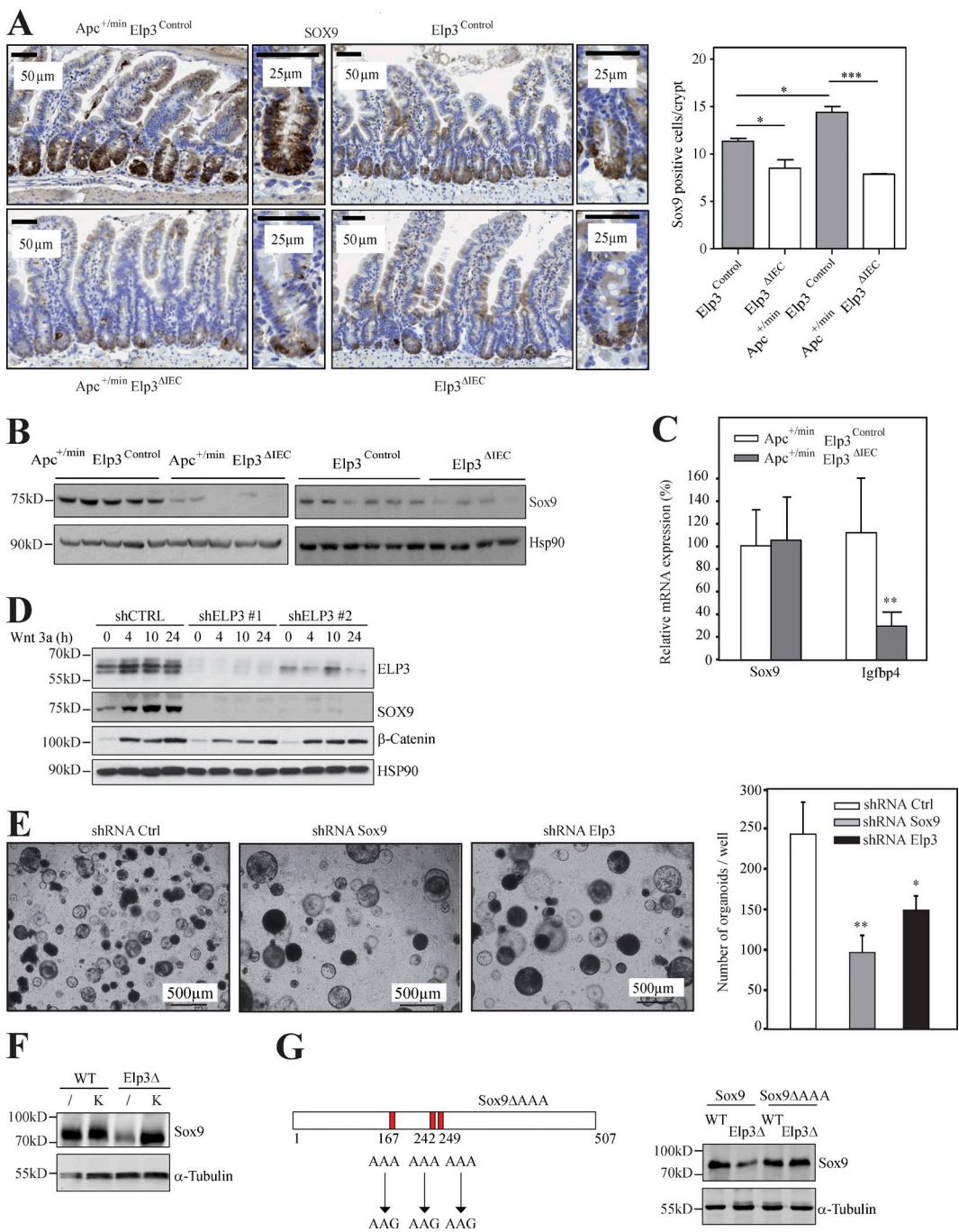


Figure 6. *Elp3* drives Sox9 expression. (A; left) Anti-Sox9 IHC analyses were conducted with intestinal crypts of 120-d-old mice of the indicated genotypes. (right) The number of Sox9⁺ cells per intestinal crypt was quantified in each genotype (mean values \pm SD; Student's *t* test; *, *P* < 0.05; ***, *P* < 0.001; *n* \geq 4). (B) Protein extracts from IECs of 120-d-old mice of the indicated genotypes were subjected to anti-Sox9 and -Hsp90 (loading control) WB analyses. (C) IECs were isolated from 120-d-old mice of the indicated genotypes and the resulting total mRNAs were subjected to quantitative real-time PCR analysis to assess Sox9 and Igfbp4 mRNA levels (mean values \pm SD; Student's *t* test; **, *P* < 0.01; *n* = 5). (D) RKO cells were untreated or stimulated with Wnt 3a for the indicated periods of time and the resulting cell extracts were subjected to WB analyses using the indicated antibodies. (E) *Apc*^{CBC} organoids were infected with the indicated shRNA construct and their growth was assessed. (right) the number of organoids per well was quantified. The histogram shows the data from three different mice (mean values \pm SD; Student's *t* test; *, *P* < 0.05; **, *P* < 0.01). (F) Total protein extracts from fission yeast cells of the indicated genotypes expressing Sox9 and containing either a plasmid overexpressing the tRNA^{UUU} (K) or the corresponding empty vector (I) were subjected to anti-Sox9 and anti- α -tubulin (loading control) WB analyses. (G) A construct generating wild-type Sox9 or a Sox9 mutant in which all lysine residues (K) were mutated into arginines (R; Sox9 Δ AAA) was expressed in yeast cells of the indicated genotypes and the resulting cell extracts were subjected to WB analyses.

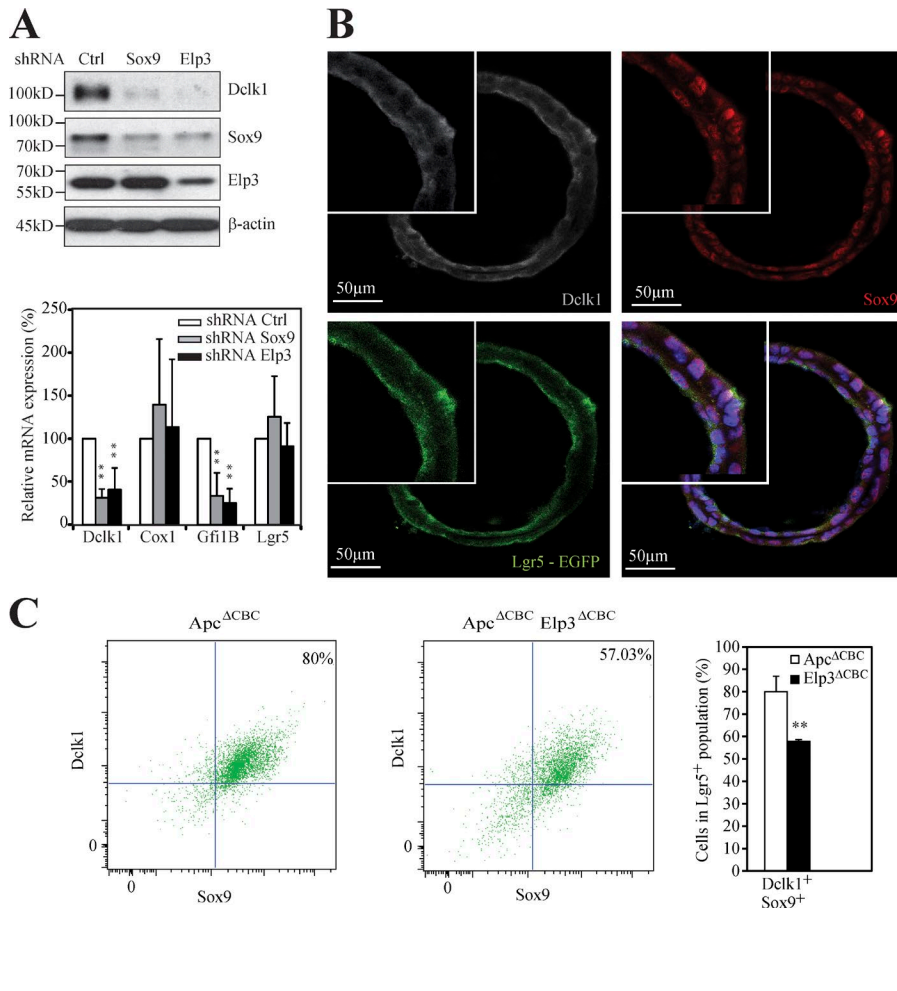


Figure 7. Elp3 expression is required to maintain a pool of Lgr5⁺/Dclk1⁺/Sox9⁺ cells upon constitutive Wnt signaling. (A) Apc^{ΔCBC} organoids were infected with a pool of lentiviral constructs delivering shRNA targeting Sox9, Elp3 or an irrelevant sequence used as negative control (shRNA Sox9, shRNA Elp3 and shRNA Ctrl, respectively). (top) Protein extracts from resulting Apc^{ΔCBC} organoids were subjected to anti-Dclk1, -Sox9, -Elp3 and β-Actin (loading control) WB analyses. (bottom) Total mRNAs from those organoids were subjected to quantitative real-time PCR analysis to monitor expression levels of the indicated transcripts. The abundance of transcripts in shRNA Ctrl condition was set to 100% and levels of the other transcripts were expressed relative to that after normalization to GAPDH. Data with organoids derived from three different mice are shown (mean values ± SD; Student's *t* test; **, *P* < 0.01). (B) Anti-Dclk1 (gray), anti-Sox9 (red), and anti-EGFP (green) IF analyses were carried out to visualize the Lgr5⁺/Sox9⁺/Dclk1⁺ cell population in Apc^{ΔCBC} organoids. (C) Single-cell suspensions of digested organoids from Apc^{ΔCBC} or Apc^{ΔCBC} Elp3^{ΔCBC} mice were stained for Sox9 and Dclk1 and were subjected to FACS analysis. Lgr5-EGFP⁺ cells were selected. (left) A representative Dot plot of Lgr5-EGFP⁺ cells stained for Sox9 and Dclk1 is illustrated. 10,000 events per mice were analyzed. (right) The histogram shows a quantification of the Dclk1⁺/Sox9⁺ cells in the Lgr5⁺ population (*n* ≥ 3 for each genotype; mean values ± SD; Student's *t* test; **, *P* < 0.01).

decreased in *Elp3*-deficient intestinal crypts. Therefore, *Elp3* may promote Tuft cell differentiation through *Gfi1B*.

Cell migration of multiple primary and transformed cells requires Elongator (Close et al., 2006; Johansen et al., 2008; Crepe et al., 2009; Lee et al., 2009). Cell invasion of glioblastoma-, neuroblastoma-, and melanoma-derived cells also relies on *Elp3* (Close et al., 2006, 2012). Further, our results show that colonosphere formation from colon cancer-derived cells was greatly dependent on *Elp3*. It remains to be seen whether the inactivation of *Elp3* in ex vivo organoid cultures generated from human cases of intestinal cancer also interferes with their growth. We also show here that *Elp3* is essential in initial steps of tumor development in vivo using a mouse model of intestinal Wnt-dependent tumor initiation. Our data demonstrate that *Elp3* expression increased upon constitutive Wnt activation. Therefore, we highlight a positive correlation between *Elp3* expression and the activation of a major oncogenic pathway. This suggests that *Elp3* may also be critically involved in the development of other epithelial malignancies harboring deregulated Wnt signaling (Michaelson and Leder, 2001; Ayyanan et al., 2006). Future studies will be dedicated to the identification of all oncogenic pathways that regulate *Elp3* expression.

Dclk1⁺ cells are differentiated Tuft cells in normal intestinal epithelium but they were also defined as cancer stem cells upon *Apc* loss (Nakanishi et al., 2013). A subpopulation of long-lived and quiescent Dclk1⁺ cells acting as tumor-initiating cells was also identified (Westphalen et al., 2014). Surprisingly, loss of *Apc* in these Dclk1⁺ cells did not cause nuclear translocation of β-catenin and, consequently, did not trigger adenoma formation. These quiescent Dclk1⁺ cells could nevertheless be reactivated and act as tumor-initiating cells only when *Apc* loss was combined with an inflammatory stimulus such as dextran sodium sulfate (DSS) colitis (Westphalen et al., 2014). We show that *Elp3* deficiency in *Apc*-mutated Lgr5⁺ intestinal stem cells blocks tumor initiation by limiting the number of Lgr5⁺/Dclk1⁺/Sox9⁺ cancer stem cells. Because a bidirectional conversion between tumor initiating and differentiated cells that relies on inflammatory signals has been established (Schwitalla et al., 2013), it remains to be tested whether fully differentiated Dclk1⁺ Tuft cells can undergo dedifferentiation to convert into so-called Dclk1⁺ tumor initiating cells.

Our data defined *Elp3* as a critical protein for Sox9 translation in both normal and *Apc*-mutated intestinal crypts.

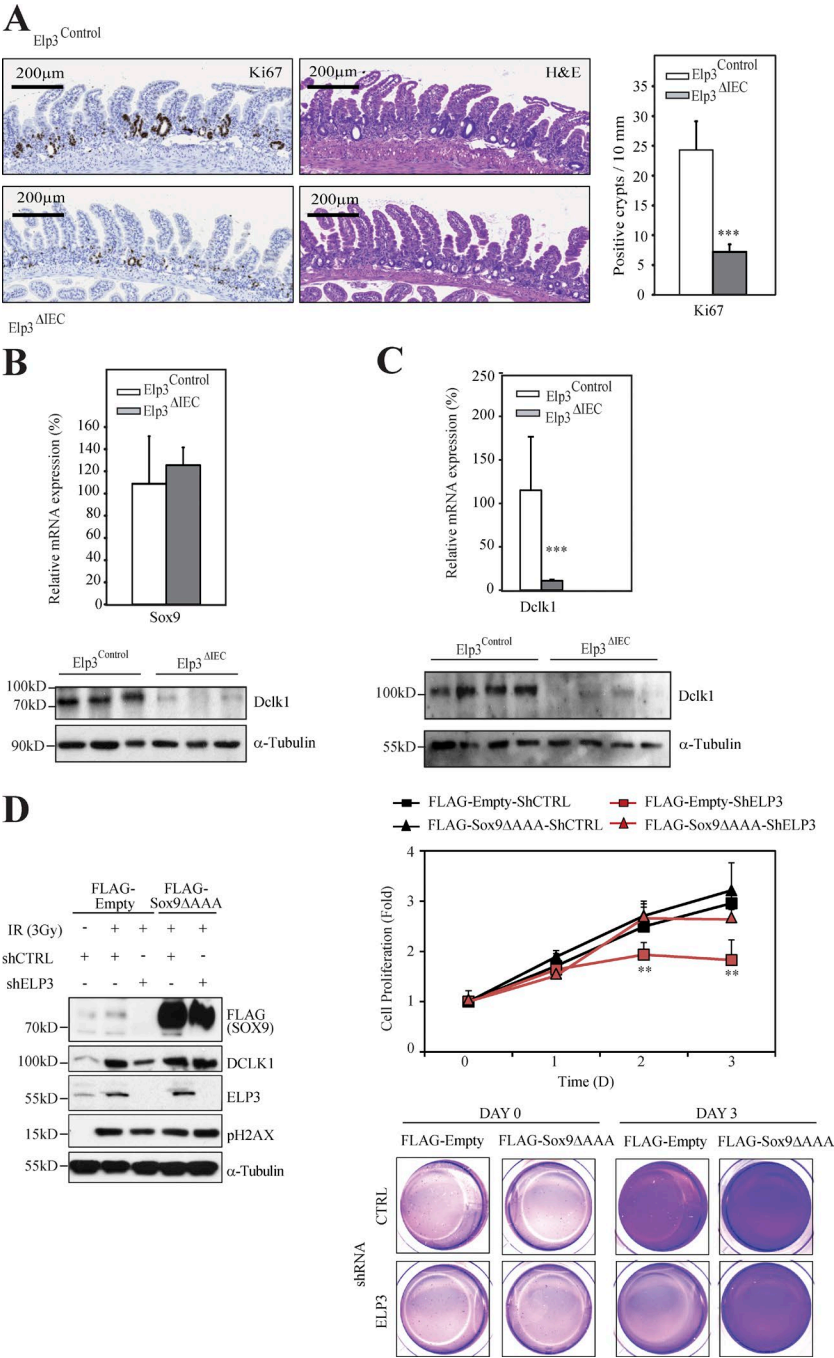


Figure 8. Elp3 promotes radiation-induced intestinal regeneration. (A; left) Representative pictures of Ki67 and H&E staining of intestinal crypts from Elp3^{Control} and Elp3^{ΔIEC} mice 3 d after 14 Gy irradiation. (right) The number of regenerating crypts according to Ki67⁺ cells per mm was quantified for the indicated genotypes (mean values \pm SD; Student's *t* test; ***, *P* < 0.001; *n* = 5). (B) Protein and mRNA extracts from IECs from Elp3^{Control} and Elp3^{ΔIEC} mice 3 d after irradiation were subjected to anti-Sox9 and Hsp90 (loading control) WB or to quantitative real-time PCR analyses (*n* = 4). (C) Protein and mRNA extracts from jejunal epithelial cells from Elp3^{Control} and Elp3^{ΔIEC} mice 3 d after irradiation were subjected to anti-Dcl1 and α -tubulin (loading control) WB or to quantitative Real time PCR analyses (mean values \pm SD; Student's *t* test; ***, *P* < 0.001; *n* = 4). (D) Control or Elp3-depleted RKO cells were transfected with an empty vector or with the Sox9 Δ AAA mutant, as indicated and were subsequently untreated or irradiated with 3 Gy/min (Day 0). (left) Cell extracts were subjected to WB analyses using the indicated antibodies. Cells showing DNA damage are positive for pH2AX. (right) Cell proliferation in all experimental conditions was measured by Crystal Violet at the indicated time points. The mean of two independent experiments performed in duplicate is illustrated (mean values \pm SD; Student's *t* test; **, *P* < 0.01). At the bottom, representative images of cells stained with Crystal Violet are shown.

Sox9 is expressed in several differentiated epithelial lineages, such as Tuft and Paneth cells. Moreover, two distinct Sox9-expressing stem cell populations were also defined using EGFP-expressing transgenic mice, namely Sox9-EGFP^{low} and Sox9-EGFP^{high} populations (Van Landeghem et al., 2012). Sox9-EGFP^{low} cells are Lgr5-enriched stem cells, whereas Sox9-EGFP^{high} cells express enteroendocrine and +4 stem cell markers. The decreased Sox9 expression seen upon *Elp3* deficiency does not result from a lower number of Paneth cells, as they appear to be functional, at least based on intact

lysozyme levels seen in *Elp3*-deficient intestinal crypts. Similarly, the enteroendocrine and +4 stem cells populations are also intact upon *Elp3* deficiency. A study concluded that Sox9 is dispensable for Tuft cell differentiation (Gerbe et al., 2011). Whether *Elp3* promotes Tuft cell differentiation through Sox9 regulation remains unclear, and it is likely that other candidates whose Wnt-dependent protein translation relies on *Elp3* contribute to Tuft cell differentiation.

The role of Sox9 in Wnt-driven tumor development in vivo remains controversial. Indeed, Sox9 inactivation appears

to increase tumor burden in the $Apc^{+/min}$ model, which appears to be consistent with the fact that Sox9 acts as a Wnt inhibitor (Akiyama et al., 2004; Shi et al., 2013). On the other hand, *Insulin Receptor Substrate-1 (IRS-1)* deficiency also limited tumor development in $Apc^{+/min}$ mice, at least because of impaired Sox9 expression (Ramocki et al., 2008). These data, combined with our study, rather support the hypothesis that a defective Sox9 expression in cancer stem cells impairs Wnt-driven cancer development and intestinal regeneration. Indeed, our results show that Sox9 deficiency also impacts on the growth of *Apc*-mutated ex vivo organoids. Our data are actually in agreement with the recently demonstrated key role of Sox9 in promoting the self-renewal of oncogene-expressing cells downstream of Wnt signaling in a genetic model of basal cell carcinoma (Larsimont et al., 2015). This study, combined with our current work, may reveal a role of Elp3 in any cancer model in which Sox9 critically maintains the self-renewal capacity of cancer stem cells.

Elp3 promotes Sox9 translation through tRNA modification in fission yeast. A study in this model suggested that proteins whose translation requires Elp3 show enriched representation of AAA codons (Bauer et al., 2012). Surprisingly, Sox9 coding sequence is not enriched in AAA codons, yet tRNA^{UUU} efficiently restored Sox9 expression in *elp3*-deleted yeast, and a Sox9 mutant in which all 3 AAA codons were mutated is still properly translated in *elp3*-deficient yeast cells. Therefore, our data further strengthen the notion that AAA codons rely on properly modified tRNAs to be efficiently translated and also define Sox9 as a Wnt-induced protein whose expression is critically controlled at the translation level.

The identity of intestinal cells required for radiation-induced intestinal regeneration has been the subject of multiple studies. These cells are Sox9⁺ and reexpress Lgr5 to undergo proliferation in regenerating intestinal crypts (Van Landeghem et al., 2012; Metcalfe et al., 2013). Consistently, Sox9 expression is required to maintain reserve stem cells to promote regeneration upon radiation (Roche et al., 2015). We show that Elp3 is required in radiation-induced regeneration in the intestine, at least by promoting Sox9 expression at the protein level. ELP3-deficient cells in which a Sox9 mutant whose translation is ELP3-independent is ectopically expressed efficiently proliferate after irradiation. Dcl1 expression was also severely decreased upon *Elp3* deficiency in the regenerating intestinal crypts. Although a study had shown that *Dcl1* inactivation did not impair the number of surviving crypts, but decreased survival of irradiated mice as a result of disrupted tight junctions (May et al., 2014), another study highlighted a critical role for a subpopulation of Dcl1⁺ cells in radiation-induced intestinal regeneration (Westphalen et al., 2014). Our results suggest that intestinal regeneration upon radiation may rely on a specific Lgr5⁺/Dcl1⁺/Sox9⁺ pool of cells whose maintenance critically relies on Elp3. Our study defines a key role for Elp3 in the DNA damage response in the intestine. An increased sensitivity of Elp3 mutants to DNA

damage was previously reported in yeast, which demonstrates that Elp3 critically controls the DNA damage response in multiple organisms (Li et al., 2009; Chen et al., 2011).

The molecular mechanisms underlying Elp3 functions remain poorly understood. It is currently believed that Elp3 promotes the acetylation of multiple substrates in distinct cell compartments to regulate transcriptional elongation in the nucleus and protein translation in the cytoplasm. Such hypothesis was recently experimentally validated while addressing the role of Elp3 in meiosis during spermatogenesis (Lin et al., 2013). We showed here that Elp3 acts downstream of Wnt, and as such, may contribute to Wnt-dependent protein acetylation, transcriptional elongation and/or to Wnt-dependent protein translation through tRNA modifications to promote tumor initiation and intestinal regeneration. Because Elp3 has been recently defined as a tRNA acetyltransferase (Selvadurai et al., 2014), our future studies will be dedicated to the elucidation of the Wnt- and Elp3-dependent protein signature involved in tumor development.

Elp3 deficiency in *Apc*-mutated intestinal crypts shares many features with the genetic inactivation of *Myc* in those crypts (Sansom et al., 2007). Whereas our data disclose a role of Elp3 in the transcription of *Myc*, both Elp3 and *Myc* may control the same pool of cancer stem cells to drive tumor development in the intestine. Interestingly, the genetic inactivation of Raptor, an essential component of mTORC1, also interferes with Wnt-dependent tumor growth but not with normal gut homeostasis (Faller et al., 2014). mTORC1 is required for cell proliferation in *Apc*-mutated intestinal crypts through S6K activation by increasing the rate of translational elongation of yet to be defined polypeptides. Therefore, it is tempting to speculate that Elp3 may act in this pathway by promoting protein translation of those polypeptides through tRNA modifications.

As cancer stem cells critically rely on Elp3 to promote Wnt-dependent cancer development, and given the fact that *Elp3* deficiency in normal intestine did not interfere with intestinal homeostasis, targeting Elp3 activity may represent a promising therapeutic approach to treat colon cancer. Future studies in human samples of intestinal cancers will be performed to generalize our conclusions and to validate the hypothesis that Elp3 is a suitable target to treat intestinal cancers showing constitutive Wnt signaling.

MATERIALS AND METHODS

Cell lines and reagents. HT29 and RKO cells were cultured in McCoy's 5A medium supplemented with 10% FBS, 1% glutamine, and 1% penicillin/streptomycin. HEK 293 Lentix cells were cultured in DMEM medium supplemented with 10% FBS, 1% glutamine, and 1% penicillin/streptomycin.

Anti- β -catenin, -Elp1, and -Hsp90 antibodies used in Western blot analyses were obtained from Santa Cruz Biotechnology, Inc. The anti-Elp3 antibody was provided by Cell Signaling Technology. Anti- α -tubulin and -acetyl- α -tubulin antibodies were purchased from Sigma-Aldrich. Anti-Histone

H3, -pH2AX, and -Dcl1 antibodies were obtained from Abcam, and anti-Sox9 and Ephrin B2 antibodies were purchased from EMD Millipore and R&D Systems, respectively.

Generating the conditional *Elp3* KO mouse. The *Elp3* gene (Ensembl gene ID, mouse ENSMUSG00000022031) is located on chromosome 14. *Elp3* exon 1 harbors the translation initiation codon. The targeting strategy was designed to generate the conditional KO (cKO), as well as the constitutive KO alleles of the *Elp3* gene (Taconic; Fig. 2 A). The targeting vector was generated using BAC clones from the C57BL/6J RPCIB-731 BAC library (clones RP23-233H18, RP23-220M13, RP23-236C3, RP23-435F17, and RP23-450B15) and transfected into the C57BL/6N Tac ES cell line (Taconic). Exon 2 was flanked by loxP sites, and the positive selection marker was flanked by F3 (Puromycin resistance [PuroR]) sites and inserted into intron 1. Homologous recombinant clones were isolated using positive (PuroR) selection. Mutant *Elp3* mice were generated by Taconic. In brief, E3.5 blastocysts from superovulated BALB/c females were injected with targeted C57BL/6 N.tac ES cells and transferred to pseudo-pregnant NMR1 females. Chimerism was determined according to the black/white coat color which reflects the contribution of ES cells to the BALB/c host. Highly chimeric mice were bred to C57BL/6 females and germline transmission was identified by C57BL/6 (black) in offspring was performed by Southern blot analysis. Crossbreeding of chimeric mice with Flp Deleter mice for in vivo selection marker deletion was performed to generate mice heterozygous for the conditional KO allele. The constitutive KO allele was obtained after Cre-mediated recombination. Deletion of exon 2 results in the loss of function of *Elp3* by generating a frame-shift to all downstream exons. For genotyping analysis, the floxed allele, defined as the conditional allele, was identified by PCR conducted on DNAs extracted from tails (Fig. 2 A). Primer sequences are available upon request. To inactivate *Elp3* in the intestine (*Elp3*^{ΔIEC}), the *Elp3*^{loxP/loxP} mouse was crossed with the Villin^{Cre/+} strain. PCR analysis using primers 1 and 2 were conducted on DNAs extracted from tissues of control or *Elp3*^{ΔIEC} mice to amplify 1,341- and 172-bp products from the conditional versus the constitutive knockout allele, respectively (Fig. 2, A and B).

Transgenic mouse models, tamoxifen injections, and exposures to radiation. The *Apc*^{+/-min} strain (C57BL/6J-*Apc*^{Min}/J), as well as the *Lgr5-EGFP-IRES-creER*^{T2} (B6.129P2-*Lgr5*^{Cre}^{+/+}*m1(cre/ESR1)Cle*/J) heterozygote knock-in mouse were purchased from The Jackson Laboratory, whereas the Villin^{Cre/+} strain was purchased from Genoway. The *Apc*^{lox/lox} strain was previously described (Sansom et al., 2007). All mice were in the C57BL/6 background, excepted for *Apc*^{lox/lox} mice that were three parts C57BL6 and one part Sv129. All experiments were approved by the local ethical committee (University of Liège, Liège, Belgium). For conditional inactivation of *Elp3* in *Lgr5*⁺ cells, four daily injections of 2 mg tamoxifen in

sunflower oil were performed intraperitoneally to the stem cell-specific *Lgr5-EGFP-IRES-creER*^{T2} knock-in mice as control (*Lgr5-EGFP-Elp3*^{Control}) or to mice resulting from the breeding between *Lgr5-EGFP-IRES-creER*^{T2} mice and the *Elp3*^{Control} strain to generate the *Lgr5-EGFP-Elp3*^{ΔCBC} strain. For the simultaneous inactivation of *Elp3* and *Apc* in *Lgr5*⁺ cells, four daily injections of 2 mg tamoxifen in sunflower oil were performed intraperitoneally to mice resulting from the cross of *Apc*^{lox/lox} mice with the *Lgr5-EGFP-IRES-creER*^{T2} strain (*Apc*^{ΔCBC}) as control or to mice resulting from the cross of *Apc*^{lox/lox} mice with the *Lgr5-EGFP-IRES-creER*^{T2} and the *Elp3*^{Control} strain (*Apc*^{ΔCBC} *Elp3*^{ΔCBC}). The sequence of all primers used for genotyping purposes are available upon request. To assess radiation-induced intestinal regeneration, 8–10-wk-old mice were exposed to 14Gy from a 137Cs source, as previously described (Ashton et al., 2010). Mice were given buprenorphine twice a day and were sacrificed 72 h after radiation.

Intestinal epithelial cells extraction and ex vivo organoid cultures. Intestines and colons were extracted from mice and cecum was removed. Intestine was divided into three parts of the same size and defined as the proximal, middle, and distal intestine. Bowels were subsequently cut in half longitudinally. Half of the tissue was rolled and used for histological purposes and the other half was used for intestinal epithelial cells extraction. In brief, bowels were washed for 10 min at 37°C in a PBS-DTT (1 mM) buffer, and then incubated for 15 min at 37°C in a HBSS-EDTA buffer (30 mM). Cells were harvested, washed twice in PBS, and flash frozen.

Ex vivo organoid cultures were performed as previously described (Sato et al., 2009). In brief, small pieces of intestine were incubated in 2 mM EDTA-PBS for 30 min at 4°C. Crypts were extracted, washed twice in PBS and cultured at same density in Matrigel (BD). DMEM/F12 supplemented with EGF (20 ng/ml), Noggin (100 ng/ml), and R-Spondin (500 ng/ml) was added every 2 d. *Apc*-mutated organoids were cultured in DMEM/F12 supplemented with EGF (20 ng/ml) and Noggin (100 ng/ml) without R-Spondin. For the generation of organoids from *Apc*^{ΔCBC} and *Apc*^{ΔCBC} *Elp3*^{ΔCBC} mice, animals were treated with tamoxifen.

Limiting dilution assay. Crypts from *Apc*^{ΔCBC} and *Apc*^{ΔCBC} *Elp3*^{ΔCBC} mice treated with tamoxifen were extracted as described above. To generate a unicellular suspension of the extracted crypts, we digested them for 30 min at 37°C with 10× Trypsin and centrifuged them at 150 rcf for 5 min. The pellet was resuspended in 1%BSA/1× PBS and filtered in a 70-μm cell strainer to be centrifuged at 150 rcf for 5 min. Finally, the pellet was resuspended in 1 ml 1%BSA/1× PBS and EGFP-*Lgr5*⁺ cells were sorted using the FACSaria (BD). EGFP-*Lgr5*⁺ sorted cells were counted and seeded in Matrigel as indicated in the figure. DMEM/F12 supplemented with EGF (20 ng/ml) and Noggin (100 ng/ml) was added every 2 d. Wells positive for organoid growth were quantified after 7 d.

Statistical analysis was performed by as previously described (Hu and Smyth, 2009).

Flow cytometry. Crypts were extracted after 30 min of incubation in 2 mM EDTA-PBS at 4°C, and then digested into single cells using the trypLE express solution (Life Technologies) containing 200 U of DNase for 30 min at 37°C. Cells were washed in 1% BSA/PBS. Resuspended cells were sorted on the BD FACSaria. For phenotyping, organoids were collected, washed in PBS, and digested for 20 min using the trypLE express solution. The resulting single-cell solution was fixed with 4% paraformaldehyde solution, permeabilized with Perm-Wash solution (BD), and stained with anti-Sox9 and -Dcl1 antibodies (Abcam) for 30 min at 4°C. Corresponding secondary antibodies (Life Technologies) were incubated for 30 min at 4°C. The FlowJo software was used to analyze data.

Total RNA extraction and real-time PCR. Total RNA from cell lines was extracted using the total RNA kit (Omega Biotek) according to manufacturer's instructions. For mice samples, total RNA was extracted using the TriPure Isolation Reagent (Roche). All samples were subsequently treated with the Recombinant DNase (Roche). cDNAs were synthesized using the Revert Aid H Minus First Strand cDNA Synthesis kit (Fermentas). Subsequent PCRs were performed using the Power SYBR Green PCR Master kit (Takara Bio Inc.) on the LightCycler 480 (Roche). The mean value of mRNA levels in control mice was set to 100% and levels in mutant mice were expressed relative to that after normalization with glyceraldehyde-3-phosphate dehydrogenase GAPDH. Data are plotted as mean values \pm SD. All primer sequences used are available upon request.

Lentiviral infections. The control or shRNAs targeting Dcl1, ELP3, β -catenin, or Sox9 were purchased from Sigma-Aldrich. Lentiviral infections in RKO or HT29 cells were performed as previously described (Creppe et al., 2009). Lentiviral infections in ex vivo organoids were performed as previously described (Koo et al., 2012).

Chromatin immunoprecipitation assays. Cells were fixed in formaldehyde 1% for 10 min at room temperature, quenched in 1.25 M glycine and lysed in SDS 1% lysis buffer. Lysates were sonicated 15 min using the Bioruptor (Diagenode), cleared by centrifugation and used for immunoprecipitation. Extracts were precleared by 1 h incubation with protein G/Herring sperm DNA/BSA, and immunoprecipitation was performed by incubating overnight at 4°C with the anti-TCF4 antibody, using IgG antibody as negative control, and then 1 h with protein G/Herring sperm DNA/BSA. Protein-DNA complexes were washed as per standard ChIP techniques. After elution, proteinase K treatment, and reversal of cross-links, DNA fragments were analyzed by quantitative real-time PCR using SYBR Green for detection. Input DNA

was analyzed simultaneously and used as normalization. Primers used are available upon request.

Immunofluorescence and immunohistochemistry analyses.

For immunohistochemistry analyses, samples were fixed overnight in 4% formalin solution and embedded in paraffin. In brief, 3- μ m-thick sections of FFPE tumors were deparaffinized and antigen retrieval was performed by boiling the sections in citrate buffer at pH 6.0 or EDTA at pH 9.0 for 20 min. Primary antibodies used were as follows: Dcl1 (1:50; pH 6.0; Abcam), Sox9 (1:50; pH 6.0; Millipore), Ki67 (1:50; pH 6.0; Cell Marque), corresponding secondary antibody detection kits for reduced background on murine tissue were used (Histofine Simple Stain Mouse MAX PO; Medac) and stained on an automated stainer (LabVision Autostainer 480S; Thermo Fisher Scientific). All slides were scanned with a Panoramic 250 slide scanner (3D Histech.com).

For immunofluorescence, frozen sections were incubated in the target retrieval solution (Dako) for 7 min. Primary antibodies are listed in the Cell lines and reagents section. Slides were analyzed using a sp5 confocal microscope (Leica).

Expression of Sox9 in fission yeast and tRNA overexpression.

The pLVX-Sox9-EGFP expression construct, a gift from S.T. Magness (University of North Carolina at Chapel Hill, Chapel Hill, NC), was used as template to generate the Sox9 Δ AAA mutant by site-directed mutagenesis, using the protocol provided by the manufacturer (Agilent Technologies). Wild-type Sox9 and the Sox9 Δ AAA cDNA mutant were amplified by PCR and cloned in the fission yeast ura4-based pREP4 that allows expression from the nmt1 promoter, which is repressed by thiamine. Wild-type and *elp3*-deleted strains were transformed with the pREP4-Sox9 plasmid and selected in EMM medium in the absence of uracil. The tRNA^{lys}UUU cloned in a *leu2*-based vector as previously described (Bauer et al., 2012), or an empty vector, were also transformed and co-selected with the pREP4-*sox9* on medium lacking both leucine and uracil. The expression of Sox9 was induced by growing cells for 22 h in the absence of thiamine. Cells were harvested at OD 0.5 (10 ml) and lysed in the presence of zirconium beads, as previously described (Fersht et al., 2007). Total protein extracts were subjected to anti-Sox9 and α -tubulin (loading control) Western blot analyses.

Statistical analysis. Student's *t* test was performed to test statistical relevance, unless otherwise specified. For quantification of Elp3 immunohistochemistry of human biopsies, total H-DAB positive areas of each slide were calculated using the ImageJ software. Specifically, H-DAB positivity was quantified from the transformed images by ImageJ IHC Toolbox. Measurements were calculated in pixels, and the analysis was done blindly. Data are expressed as percentage of H-DAB-positive pixels on total pixels per slide.

ACKNOWLEDGMENTS

We thank S.T. Magness (University of North Carolina at Chapel Hill, Chapel Hill, NC) for the gift of the pLVX-Sox9-EGFP expression construct, as well as the GIGA Imaging and Flow Cytometry Facility.

This study was supported by grants from the Belgian National Funds for Scientific Research (FNRS), TELEVE, the Belgian Federation against cancer, the University of Liege (Concerted Research Action Program [BIO-ACET]) and Fonds Spéciaux [C-11/03]), the Centre Anti-Cancéreux, the Leon Fredericq Foundation (ULg), as well as by the Walloon Excellence in Life Sciences and Biotechnology (WELBIO). P. Close and A. Chariot are Research Associate and Senior Research Associate at the FNRS, respectively. The authors declare no competing financial interests.

Submitted: 8 December 2014

Accepted: 30 September 2015

REFERENCES

- Akiyama, H., J.P. Lyons, Y. Mori-Akiyama, X. Yang, R. Zhang, Z. Zhang, J.M. Deng, M.M. Taketo, T. Nakamura, R.R. Behringer, et al. 2004. Interactions between Sox9 and beta-catenin control chondrocyte differentiation. *Genes Dev.* 18:1072–1087. <http://dx.doi.org/10.1101/gad.1171104>
- Ashton, G.H., J.P. Morton, K. Myant, T.J. Phesse, R.A. Ridgway, V. Marsh, J.A. Wilkins, D. Athineos, V. Muncan, R. Kemp, et al. 2010. Focal adhesion kinase is required for intestinal regeneration and tumorigenesis downstream of Wnt/c-Myc signaling. *Dev. Cell.* 19:259–269. <http://dx.doi.org/10.1016/j.devcel.2010.07.015>
- Ayyanan, A., G. Civenni, L. Ciarloni, C. Morel, N. Mueller, K. Lefort, A. Mandinova, W. Raffoul, M. Fiche, G.P. Dotto, and C. Briskin. 2006. Increased Wnt signaling triggers oncogenic conversion of human breast epithelial cells by a Notch-dependent mechanism. *Proc. Natl. Acad. Sci. USA.* 103:3799–3804. <http://dx.doi.org/10.1073/pnas.0600065103>
- Barker, N. 2014. Adult intestinal stem cells: critical drivers of epithelial homeostasis and regeneration. *Nat. Rev. Mol. Cell Biol.* 15:19–33. <http://dx.doi.org/10.1038/nrm3721>
- Barker, N., J.H. van Es, J. Kuipers, P. Kujala, M. van den Born, M. Cozijnsen, A. Haeghebarth, J. Korving, H. Begthel, P.J. Peters, and H. Clevers. 2007. Identification of stem cells in small intestine and colon by marker gene Lgr5. *Nature.* 449:1003–1007. <http://dx.doi.org/10.1038/nature06196>
- Barker, N., R.A. Ridgway, J.H. van Es, M. van de Wetering, H. Begthel, M. van den Born, E. Danenberg, A.R. Clarke, O.J. Sansom, and H. Clevers. 2009. Crypt stem cells as the cells-of-origin of intestinal cancer. *Nature.* 457:608–611. <http://dx.doi.org/10.1038/nature07602>
- Basak, O., M. van de Born, J. Korving, J. Beumer, S. van der Elst, J.H. van Es, and H. Clevers. 2014. Mapping early fate determination in Lgr5+ crypt stem cells using a novel Ki67-RFP allele. *EMBO J.* 33:2057–2068. <http://dx.doi.org/10.15252/embj.201488017>
- Bastide, P., C. Darido, J. Pannequin, R. Kist, S. Robine, C. Marty-Double, F. Bibeau, G. Scherer, D. Joubert, F. Hollande, et al. 2007. Sox9 regulates cell proliferation and is required for Paneth cell differentiation in the intestinal epithelium. *J. Cell Biol.* 178:635–648. <http://dx.doi.org/10.1083/jcb.200704152>
- Bauer, F., A. Matsuyama, J. Candiracci, M. Dieu, J. Scheliga, D.A. Wolf, M. Yoshida, and D. Hermand. 2012. Translational control of cell division by Elongator. *Cell Reports.* 1:424–433. <http://dx.doi.org/10.1016/j.celrep.2012.04.001>
- Bhanja, P., S. Saha, R. Kabarriti, L. Liu, N. Roy-Chowdhury, J. Roy-Chowdhury, R.S. Sellers, A.A. Alfieri, and C. Guha. 2009. Protective role of R-spondin1, an intestinal stem cell growth factor, against radiation-induced gastrointestinal syndrome in mice. *PLoS One.* 4:e8014. <http://dx.doi.org/10.1371/journal.pone.0008014>
- Bjerknes, M., C. Khandanpour, T. Möröy, T. Fujiyama, M. Hoshino, T.J. Klisch, Q. Ding, L. Gan, J. Wang, M.G. Martín, and H. Cheng. 2012. Origin of the brush cell lineage in the mouse intestinal epithelium. *Dev. Biol.* 362:194–218. <http://dx.doi.org/10.1016/j.ydbio.2011.12.009>
- Blache, P., M. van de Wetering, I. Duluc, C. Domon, P. Berta, J.N. Freund, H. Clevers, and P. Jay. 2004. SOX9 is an intestine crypt transcription factor, is regulated by the Wnt pathway, and represses the CDX2 and MUC2 genes. *J. Cell Biol.* 166:37–47. <http://dx.doi.org/10.1083/jcb.200311021>
- Buczacki, S.J., H.I. Zecchini, A.M. Nicholson, R. Russell, L. Vermeulen, R. Kemp, and D.J. Winton. 2013. Intestinal label-retaining cells are secretory precursors expressing Lgr5. *Nature.* 495:65–69. <http://dx.doi.org/10.1038/nature11965>
- Chen, C., B. Huang, M. Eliasson, P. Rydén, and A.S. Byström. 2011. Elongator complex influences telomeric gene silencing and DNA damage response by its role in wobble uridine tRNA modification. *PLoS Genet.* 7:e1002258. <http://dx.doi.org/10.1371/journal.pgen.1002258>
- Clevers, H. 2013. The intestinal crypt, a prototype stem cell compartment. *Cell.* 154:274–284. <http://dx.doi.org/10.1016/j.cell.2013.07.004>
- Clevers, H., and R. Nusse. 2012. Wnt/ β -catenin signaling and disease. *Cell.* 149:1192–1205. <http://dx.doi.org/10.1016/j.cell.2012.05.012>
- Close, P., N. Hawkes, I. Cornez, C. Creppe, C.A. Lambert, B. Rogister, U. Siebenlist, M.P. Merville, S.A. Slaugenhaupt, V. Bours, et al. 2006. Transcription impairment and cell migration defects in elongator-depleted cells: implication for familial dysautonomia. *Mol. Cell.* 22:521–531. <http://dx.doi.org/10.1016/j.molcel.2006.04.017>
- Close, P., M. Gillard, A. Ladang, Z. Jiang, J. Papuga, N. Hawkes, L. Nguyen, J.P. Chapelle, F. Bouillenne, J. Svejstrup, et al. 2012. DERP6 (ELP5) and C3ORF75 (ELP6) regulate tumorigenicity and migration of melanoma cells as subunits of Elongator. *J. Biol. Chem.* 287:32535–32545. <http://dx.doi.org/10.1074/jbc.M112.402727>
- Cordero, J.B., and O.J. Sansom. 2012. Wnt signalling and its role in stem cell-driven intestinal regeneration and hyperplasia. *Acta Physiol. (Oxf).* 204:137–143. <http://dx.doi.org/10.1111/j.1748-1716.2011.02288.x>
- Creppe, C., L. Malinouskaya, M.L. Volvert, M. Gillard, P. Close, O. Malaise, S. Laguesse, I. Cornez, S. Rahmouni, S. Ormenese, et al. 2009. Elongator controls the migration and differentiation of cortical neurons through acetylation of alpha-tubulin. *Cell.* 136:551–564. <http://dx.doi.org/10.1016/j.cell.2008.11.043>
- Esberg, A., B. Huang, M.J. Johansson, and A.S. Byström. 2006. Elevated levels of two tRNA species bypass the requirement for elongator complex in transcription and exocytosis. *Mol. Cell.* 24:139–148. <http://dx.doi.org/10.1016/j.molcel.2006.07.031>
- Faller, W.J., T.J. Jackson, J.R. Knight, R.A. Ridgway, T. Jamieson, S.A. Karim, C. Jones, S. Radulescu, D.J. Huels, K.B. Myant, et al. 2014. mTORC1-mediated translational elongation limits intestinal tumour initiation and growth. *Nature.* 517:497–500. <http://dx.doi.org/10.1038/nature13896>
- Fersht, N., D. Hermand, J. Hayles, and P. Nurse. 2007. Cdc18/CDC6 activates the Rad3-dependent checkpoint in the fission yeast. *Nucleic Acids Res.* 35:5323–5337. <http://dx.doi.org/10.1093/nar/gkm527>
- Gerbe, F., J.H. van Es, L. Makrini, B. Brulin, G. Mellitzer, S. Robine, B. Romagnolo, N.F. Shroyer, J.F. Bourgaux, C. Pignodel, et al. 2011. Distinct ATOH1 and Neurog3 requirements define tuft cells as a new secretory cell type in the intestinal epithelium. *J. Cell Biol.* 192:767–780. <http://dx.doi.org/10.1083/jcb.201010127>
- Gerbe, F., C. Legraeverend, and P. Jay. 2012. The intestinal epithelium tuft cells: specification and function. *Cell. Mol. Life Sci.* 69:2907–2917. <http://dx.doi.org/10.1007/s00018-012-0984-7>
- Greenwood, C., L.A. Selth, A.B. Dirac-Svejstrup, and J.Q. Svejstrup. 2009. An iron-sulfur cluster domain in Elp3 important for the structural integrity of elongator. *J. Biol. Chem.* 284:141–149. <http://dx.doi.org/10.1074/jbc.M805312200>
- Hattori, T., H. Eberspaecher, J. Lu, R. Zhang, T. Nishida, T. Kahyo, H. Yasuda, and B. de Crombrughe. 2006. Interactions between PIAS proteins and

- SOX9 result in an increase in the cellular concentrations of SOX9. *J. Biol. Chem.* 281:14417–14428. <http://dx.doi.org/10.1074/jbc.M511330200>
- Hattori, T., F. Coustry, S. Stephens, H. Eberspaecher, M. Takigawa, H. Yasuda, and B. de Crombrughe. 2008. Transcriptional regulation of chondrogenesis by coactivator Tip60 via chromatin association with Sox9 and Sox5. *Nucleic Acids Res.* 36:3011–3024. <http://dx.doi.org/10.1093/nar/gkn150>
- Hu, Y., and G.K. Smyth. 2009. ELDA: extreme limiting dilution analysis for comparing depleted and enriched populations in stem cell and other assays. *J. Immunol. Methods.* 347:70–78. <http://dx.doi.org/10.1016/j.jim.2009.06.008>
- Huang, B., M.J. Johansson, and A.S. Byström. 2005. An early step in wobble uridine tRNA modification requires the Elongator complex. *RNA.* 11:424–436. <http://dx.doi.org/10.1261/rna.7247705>
- Jensen, J., E.E. Pedersen, P. Galante, J. Hald, R.S. Heller, M. Ishibashi, R. Kageyama, F. Guillemot, P. Serup, and O.D. Madsen. 2000. Control of endodermal endocrine development by Hes-1. *Nat. Genet.* 24:36–44. <http://dx.doi.org/10.1038/71657>
- Johansen, L.D., T. Naumanen, A. Knudsen, N. Westerlund, I. Gromova, M. Junttila, C. Nielsen, T. Bottzauw, A. Tolkovsky, J. Westermarck, et al. 2008. IKAP localizes to membrane ruffles with filamin A and regulates actin cytoskeleton organization and cell migration. *J. Cell Sci.* 121:854–864. <http://dx.doi.org/10.1242/jcs.013722>
- Kim, J.H., W.S. Lane, and D. Reinberg. 2002. Human Elongator facilitates RNA polymerase II transcription through chromatin. *Proc. Natl. Acad. Sci. USA.* 99:1241–1246. <http://dx.doi.org/10.1073/pnas.251672198>
- Koo, B.K., D.E. Stange, T. Sato, W. Karthaus, H.F. Farin, M. Huch, J.H. van Es, and H. Clevers. 2012. Controlled gene expression in primary Lgr5 organoid cultures. *Nat. Methods.* 9:81–83. <http://dx.doi.org/10.1038/nmeth.1802>
- Kristjuhan, A., J. Walker, N. Suka, M. Grunstein, D. Roberts, B.R. Cairns, and J.Q. Svejstrup. 2002. Transcriptional inhibition of genes with severe histone h3 hypoacetylation in the coding region. *Mol. Cell.* 10:925–933. [http://dx.doi.org/10.1016/S1097-2765\(02\)00647-0](http://dx.doi.org/10.1016/S1097-2765(02)00647-0)
- Lane, S.W., S.M. Sykes, F. Al-Shahrour, S. Shterental, M. Paktinat, C. Lo Celso, J.L. Jesneck, B.L. Ebert, D.A. Williams, and D.G. Gilliland. 2010. The Apc(min) mouse has altered hematopoietic stem cell function and provides a model for MPD/MDS. *Blood.* 115:3489–3497. <http://dx.doi.org/10.1182/blood-2009-11-251728>
- Larsimont, J.C., K.K. Youssef, A. Sánchez-Danés, V. Sukumaran, M. Defrance, B. Delatte, M. Liagre, P. Baatsen, J.C. Marine, S. Lippens, et al. 2015. Sox9 Controls Self-Renewal of Oncogene Targeted Cells and Links Tumor Initiation and Invasion. *Cell Stem Cell.* 17:60–73. <http://dx.doi.org/10.1016/j.stem.2015.05.008>
- Lee, G., E.P. Papapetrou, H. Kim, S.M. Chambers, M.J. Tomishima, C.A. Fasano, Y.M. Ganat, J. Menon, F. Shimizu, A. Viale, et al. 2009. Modelling pathogenesis and treatment of familial dysautonomia using patient-specific iPSCs. *Nature.* 461:402–406. <http://dx.doi.org/10.1038/nature08320>
- Li, Q., A.M. Fazly, H. Zhou, S. Huang, Z. Zhang, and B. Stillman. 2009. The elongator complex interacts with PCNA and modulates transcriptional silencing and sensitivity to DNA damage agents. *PLoS Genet.* 5:e1000684. <http://dx.doi.org/10.1371/journal.pgen.1000684>
- Lin, F.J., L. Shen, C.W. Jang, P.O. Falnes, and Y. Zhang. 2013. Ikbkap/Elp1 deficiency causes male infertility by disrupting meiotic progression. *PLoS Genet.* 9:e1003516. <http://dx.doi.org/10.1371/journal.pgen.1003516>
- May, R., D. Qu, N. Weygant, P. Chandrasekaran, N. Ali, S.A. Lightfoot, L. Li, S.M. Sureban, and C.W. Houchen. 2014. Brief report: Dcl1 deletion in tuft cells results in impaired epithelial repair after radiation injury. *Stem Cells.* 32:822–827. <http://dx.doi.org/10.1002/stem.1566>
- Merlos-Suárez, A., F.M. Barriga, P. Jung, M. Iglesias, M.V. Céspedes, D. Rossell, M. Sevillano, X. Hernando-Mombona, V. da Silva-Diz, P. Muñoz, et al. 2011. The intestinal stem cell signature identifies colorectal cancer stem cells and predicts disease relapse. *Cell Stem Cell.* 8:511–524. <http://dx.doi.org/10.1016/j.stem.2011.02.020>
- Merritt, A.J., C.S. Potten, C.J. Kemp, J.A. Hickman, A. Balmain, D.P. Lane, and P.A. Hall. 1994. The role of p53 in spontaneous and radiation-induced apoptosis in the gastrointestinal tract of normal and p53-deficient mice. *Cancer Res.* 54:614–617.
- Metcalfe, C., N.M. Kljavin, R. Ybarra, and F.J. de Sauvage. 2013. Lgr5⁺ stem cells are indispensable for radiation-induced intestinal regeneration. *Cell Stem Cell.* 14:149–159. <http://dx.doi.org/10.1016/j.stem.2013.11.008>
- Michaelson, J.S., and P. Leder. 2001. beta-catenin is a downstream effector of Wnt-mediated tumorigenesis in the mammary gland. *Oncogene.* 20:5093–5099. <http://dx.doi.org/10.1038/sj.onc.1204586>
- Montgomery, R.K., D.L. Carlone, C.A. Richmond, L. Farilla, M.E. Kranendonk, D.E. Henderson, N.Y. Baffour-Awuah, D.M. Ambroz, L.K. Fogli, S. Algra, and D.T. Breaute. 2011. Mouse telomerase reverse transcriptase (mTert) expression marks slowly cycling intestinal stem cells. *Proc. Natl. Acad. Sci. USA.* 108:179–184. <http://dx.doi.org/10.1073/pnas.1013004108>
- Mori-Akiyama, Y., M. van den Born, J.H. van Es, S.R. Hamilton, H.P. Adams, J. Zhang, H. Clevers, and B. de Crombrughe. 2007. SOX9 is required for the differentiation of paneth cells in the intestinal epithelium. *Gastroenterology.* 133:539–546. <http://dx.doi.org/10.1053/j.gastro.2007.05.020>
- Morin, P.J., A.B. Sparks, V. Korinek, N. Barker, H. Clevers, B. Vogelstein, and K.W. Kinzler. 1997. Activation of beta-catenin-Tcf signaling in colon cancer by mutations in beta-catenin or APC. *Science.* 275:1787–1790. <http://dx.doi.org/10.1126/science.275.5307.1787>
- Muñoz, J., D.E. Stange, A.G. Schepers, M. van de Wetering, B.K. Koo, S. Itzkovitz, R. Volckmann, K.S. Kung, J. Koster, S. Radulescu, et al. 2012. The Lgr5 intestinal stem cell signature: robust expression of proposed quiescent '+4' cell markers. *EMBO J.* 31:3079–3091. <http://dx.doi.org/10.1038/emboj.2012.166>
- Nakanishi, Y., H. Seno, A. Fukuoka, T. Ueo, Y. Yamaga, T. Maruno, N. Nakanishi, K. Kanda, H. Komekado, M. Kawada, et al. 2013. Dcl1 distinguishes between tumor and normal stem cells in the intestine. *Nat. Genet.* 45:98–103. <http://dx.doi.org/10.1038/ng.2481>
- Otero, G., J. Fellows, Y. Li, T. de Bizemont, A.M. Dirac, C.M. Gustafsson, H. Erdjument-Bromage, P. Tempst, and J.Q. Svejstrup. 1999. Elongator, a multisubunit component of a novel RNA polymerase II holoenzyme for transcriptional elongation. *Mol. Cell.* 3:109–118. [http://dx.doi.org/10.1016/S1097-2765\(00\)80179-3](http://dx.doi.org/10.1016/S1097-2765(00)80179-3)
- Potten, C.S., W.J. Hume, P. Reid, and J. Cairns. 1978. The segregation of DNA in epithelial stem cells. *Cell.* 15:899–906. [http://dx.doi.org/10.1016/0092-8674\(78\)90274-X](http://dx.doi.org/10.1016/0092-8674(78)90274-X)
- Powell, A.E., Y. Wang, Y. Li, E.J. Poulin, A.L. Means, M.K. Washington, J.N. Higginbotham, A. Juchheim, N. Prasad, S.E. Levy, et al. 2012. The pan-ErbB negative regulator Lrig1 is an intestinal stem cell marker that functions as a tumor suppressor. *Cell.* 149:146–158. <http://dx.doi.org/10.1016/j.cell.2012.02.042>
- Ramocki, N.M., H.R. Wilkins, S.T. Magness, J.G. Simmons, B.P. Scull, G.H. Lee, K.K. McNaughton, and P.K. Lund. 2008. Insulin receptor substrate-1 deficiency promotes apoptosis in the putative intestinal crypt stem cell region, limits Apcmin/+ tumors, and regulates Sox9. *Endocrinology.* 149:261–267. <http://dx.doi.org/10.1210/en.2007-0869>
- Roche, K.C., A.D. Gracz, X.F. Liu, V. Newton, H. Akiyama, and S.T. Magness. 2015. SOX9 Maintains Reserve Stem Cells and Preserves Radioresistance in Mouse Small Intestine. *Gastroenterology.* In press. 26170137
- Sangiorgi, E., and M.R. Capecchi. 2008. Bmi1 is expressed in vivo in intestinal stem cells. *Nat. Genet.* 40:915–920. <http://dx.doi.org/10.1038/ng.165>
- Sansom, O.J., V.S. Meniel, V. Muncan, T.J. Phesse, J.A. Wilkins, K.R. Reed, J.K. Vass, D. Athineos, H. Clevers, and A.R. Clarke. 2007. Myc deletion

- rescues Apc deficiency in the small intestine. *Nature*. 446:676–679. <http://dx.doi.org/10.1038/nature05674>
- Saqui-Salces, M., T.M. Keeley, A.S. Grosse, X.T. Qiao, M. El-Zaatari, D.L. Gumucio, L.C. Samuelson, and J.L. Merchant. 2011. Gastric tuft cells express DCLK1 and are expanded in hyperplasia. *Histochem. Cell Biol.* 136:191–204. <http://dx.doi.org/10.1007/s00418-011-0831-1>
- Sato, T., R.G. Vries, H.J. Snippert, M. van de Wetering, N. Barker, D.E. Stange, J.H. van Es, A. Abo, P. Kujala, P.J. Peters, and H. Clevers. 2009. Single Lgr5 stem cells build crypt-villus structures in vitro without a mesenchymal niche. *Nature*. 459:262–265. <http://dx.doi.org/10.1038/nature07935>
- Schepers, A.G., H.J. Snippert, D.E. Stange, M. van den Born, J.H. van Es, M. van de Wetering, and H. Clevers. 2012. Lineage tracing reveals Lgr5+ stem cell activity in mouse intestinal adenomas. *Science*. 337:730–735. <http://dx.doi.org/10.1126/science.1224676>
- Schwitalla, S., A.A. Fingerle, P. Cammareri, T. Nebelsiek, S.I. Göktuna, P.K. Ziegler, O. Canli, J. Heijmans, D.J. Huels, G. Moreaux, et al. 2013. Intestinal tumorigenesis initiated by dedifferentiation and acquisition of stem-cell-like properties. *Cell*. 152:25–38. <http://dx.doi.org/10.1016/j.cell.2012.12.012>
- Selvadurai, K., P. Wang, J. Seimetz, and R.H. Huang. 2014. Archaeal Etp3 catalyzes tRNA wobble uridine modification at C5 via a radical mechanism. *Nat. Chem. Biol.* 10:810–812. <http://dx.doi.org/10.1038/nchembio.1610>
- Shi, Z., C.I. Chiang, T.A. Mistretta, A. Major, and Y. Mori-Akiyama. 2013. SOX9 directly regulates IGF1R-4 in the intestinal epithelium. *Am. J. Physiol. Gastrointest. Liver Physiol.* 305:G74–G83. <http://dx.doi.org/10.1152/ajpgi.00086.2013>
- Shroyer, N.F., M.A. Helmrath, V.Y. Wang, B. Antalffy, S.J. Henning, and H.Y. Zoghbi. 2007. Intestine-specific ablation of mouse atonal homolog 1 (Math1) reveals a role in cellular homeostasis. *Gastroenterology*. 132:2478–2488. <http://dx.doi.org/10.1053/j.gastro.2007.03.047>
- Su, L.K., K.W. Kinzler, B. Vogelstein, A.C. Preisinger, A.R. Moser, C. Luongo, K.A. Gould, and W.F. Dove. 1992. Multiple intestinal neoplasia caused by a mutation in the murine homolog of the APC gene. *Science*. 256:668–670. <http://dx.doi.org/10.1126/science.1350108>
- Takeda, N., R. Jain, M.R. LeBoeuf, Q. Wang, M.M. Lu, and J.A. Epstein. 2011. Interconversion between intestinal stem cell populations in distinct niches. *Science*. 334:1420–1424. <http://dx.doi.org/10.1126/science.1213214>
- Tian, H., B. Biehs, S. Warming, K.G. Leong, L. Rangell, O.D. Klein, and F.J. de Sauvage. 2011. A reserve stem cell population in small intestine renders Lgr5-positive cells dispensable. *Nature*. 478:255–259. <http://dx.doi.org/10.1038/nature10408>
- van der Flier, L.G., M.E. van Gijn, P. Hatzis, P. Kujala, A. Haegerbarth, D.E. Stange, H. Begthel, M. van den Born, V. Guryev, I. Oving, et al. 2009. Transcription factor achaete scute-like 2 controls intestinal stem cell fate. *Cell*. 136:903–912. <http://dx.doi.org/10.1016/j.cell.2009.01.031>
- van de Wetering, M., E. Sancho, C. Verweij, W. de Lau, I. Oving, A. Hurlstone, K. van der Horn, E. Batlle, D. Coudreuse, A.P. Haramis, et al. 2002. The beta-catenin/TCF-4 complex imposes a crypt progenitor phenotype on colorectal cancer cells. *Cell*. 111:241–250. [http://dx.doi.org/10.1016/S0092-8674\(02\)01014-0](http://dx.doi.org/10.1016/S0092-8674(02)01014-0)
- Van Landeghem, L., M.A. Santoro, A.E. Krebs, A.T. Mah, J.J. Dehmer, A.D. Gracz, B.P. Scull, K. McNaughton, S.T. Magness, and P.K. Lund. 2012. Activation of two distinct Sox9-EGFP-expressing intestinal stem cell populations during crypt regeneration after irradiation. *Am. J. Physiol. Gastrointest. Liver Physiol.* 302:G1111–G1132. <http://dx.doi.org/10.1152/ajpgi.00519.2011>
- Verma, U.N., R.M. Surabhi, A. Schmalstieg, C. Becerra, and R.B. Gaynor. 2003. Small interfering RNAs directed against beta-catenin inhibit the in vitro and in vivo growth of colon cancer cells. *Clin. Cancer Res.* 9:1291–1300.
- Wang, Z., B. Vogelstein, and K.W. Kinzler. 2003. Phosphorylation of beta-catenin at S33, S37, or T41 can occur in the absence of phosphorylation at T45 in colon cancer cells. *Cancer Res.* 63:5234–5235.
- Westphalen, C.B., S. Asfaha, Y. Hayakawa, Y. Takemoto, D.J. Lukin, A.H. Nuber, A. Brandtner, W. Setlik, H. Remotti, A. Muley, et al. 2014. Long-lived intestinal tuft cells serve as colon cancer-initiating cells. *J. Clin. Invest.* 124:1283–1295. <http://dx.doi.org/10.1172/JCI73434>
- Winkler, G.S., A. Kristjahan, H. Erdjument-Bromage, P. Tempst, and J.Q. Svejstrup. 2002. Elongator is a histone H3 and H4 acetyltransferase important for normal histone acetylation levels in vivo. *Proc. Natl. Acad. Sci. USA*. 99:3517–3522. <http://dx.doi.org/10.1073/pnas.022042899>
- Withers, H.R., and M.M. Elkind. 1970. Microcolony survival assay for cells of mouse intestinal mucosa exposed to radiation. *Int. J. Radiat. Biol. Relat. Stud. Phys. Chem. Med.* 17:261–267. <http://dx.doi.org/10.1080/09553007014550291>
- Wittschieben, B.O., G. Otero, T. de Bizemont, J. Fellows, H. Erdjument-Bromage, R. Ohba, Y. Li, C.D. Allis, P. Tempst, and J.Q. Svejstrup. 1999. A novel histone acetyltransferase is an integral subunit of elongating RNA polymerase II holoenzyme. *Mol. Cell*. 4:123–128. [http://dx.doi.org/10.1016/S1097-2765\(00\)80194-X](http://dx.doi.org/10.1016/S1097-2765(00)80194-X)
- Yang, Q., N.A. Bermingham, M.J. Finegold, and H.Y. Zoghbi. 2001. Requirement of Math1 for secretory cell lineage commitment in the mouse intestine. *Science*. 294:2155–2158. <http://dx.doi.org/10.1126/science.1065718>
- Yilmaz, O.H., P. Katajisto, D.W. Lamming, Y. Gültekin, K.E. Bauer-Rowe, S. Sengupta, K. Birsoy, A. Dursun, V.O. Yilmaz, M. Selig, et al. 2012. mTORC1 in the Paneth cell niche couples intestinal stem-cell function to calorie intake. *Nature*. 486:490–495. <http://dx.doi.org/10.1038/nature11163>
- Zhou, W.J., Z.H. Geng, J.R. Spence, and J.G. Geng. 2013. Induction of intestinal stem cells by R-spondin 1 and Slit2 augments chemoradioprotection. *Nature*. 501:107–111. <http://dx.doi.org/10.1038/nature12416>